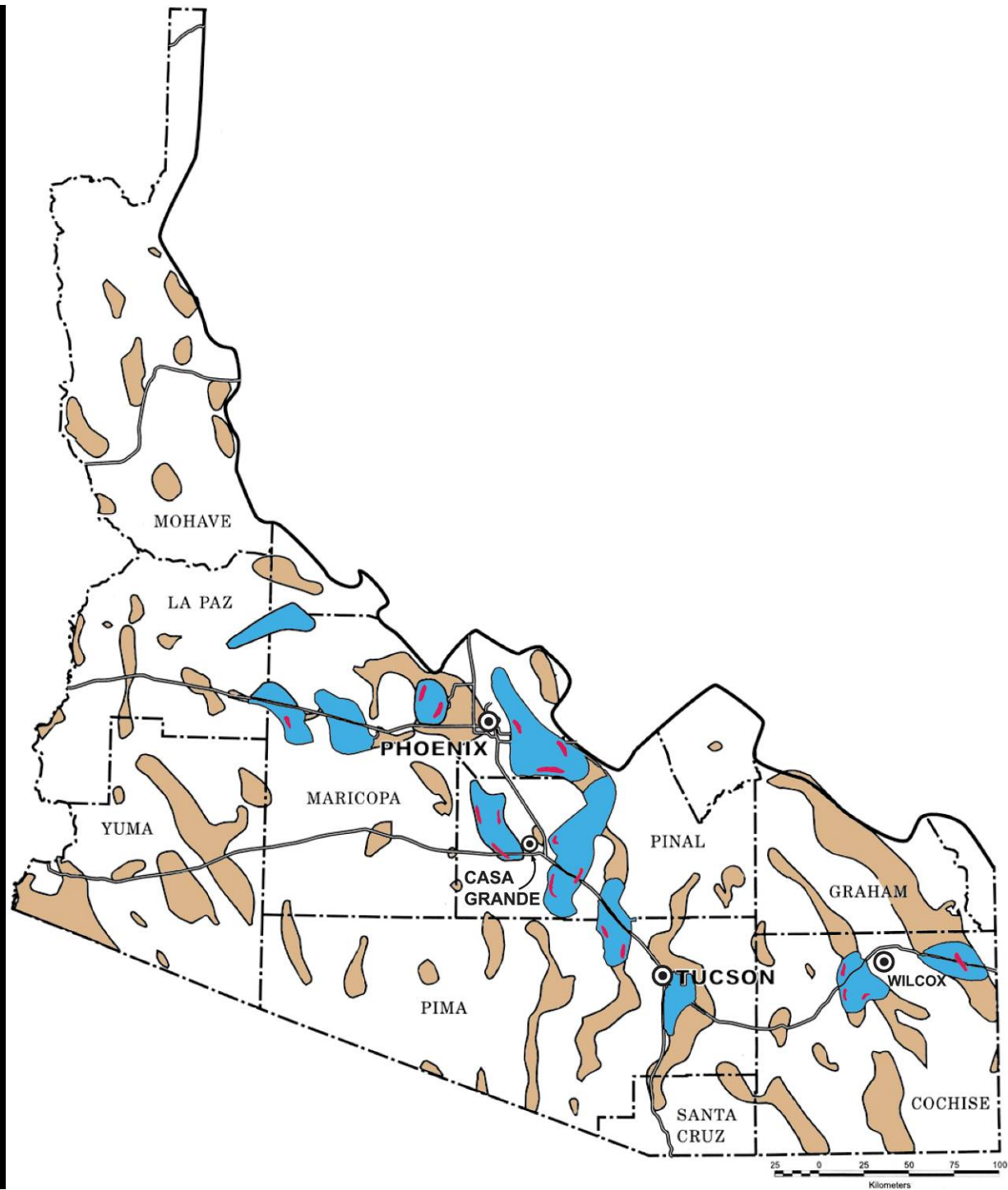
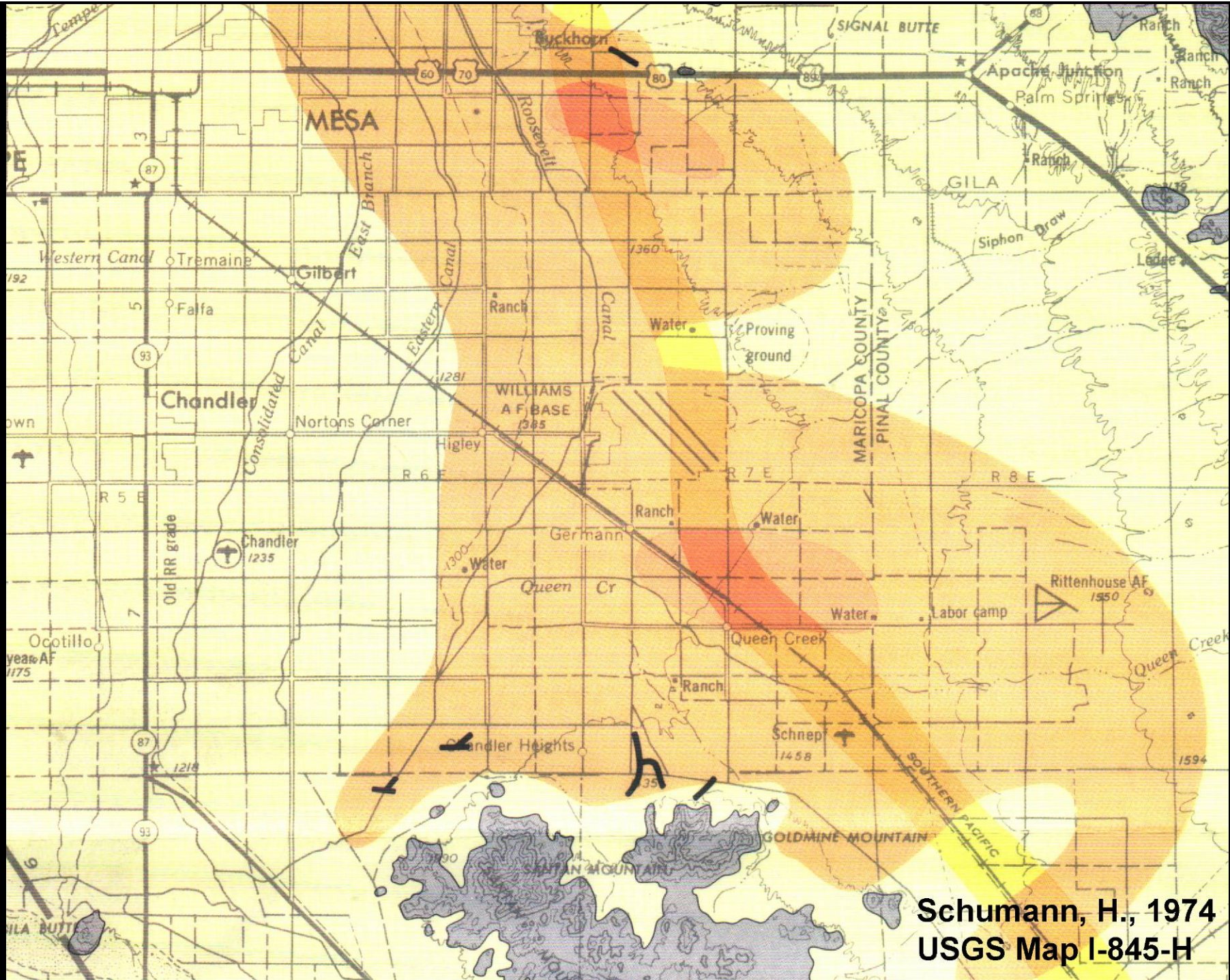


EARTH FISSURES IN ARIZONA



Raymond C. Harris





Schumann, H., 1974
USGS Map I-845-H

111° 37' 30"

Arizona Geological Survey Open-File Report 94-11



Sossaman

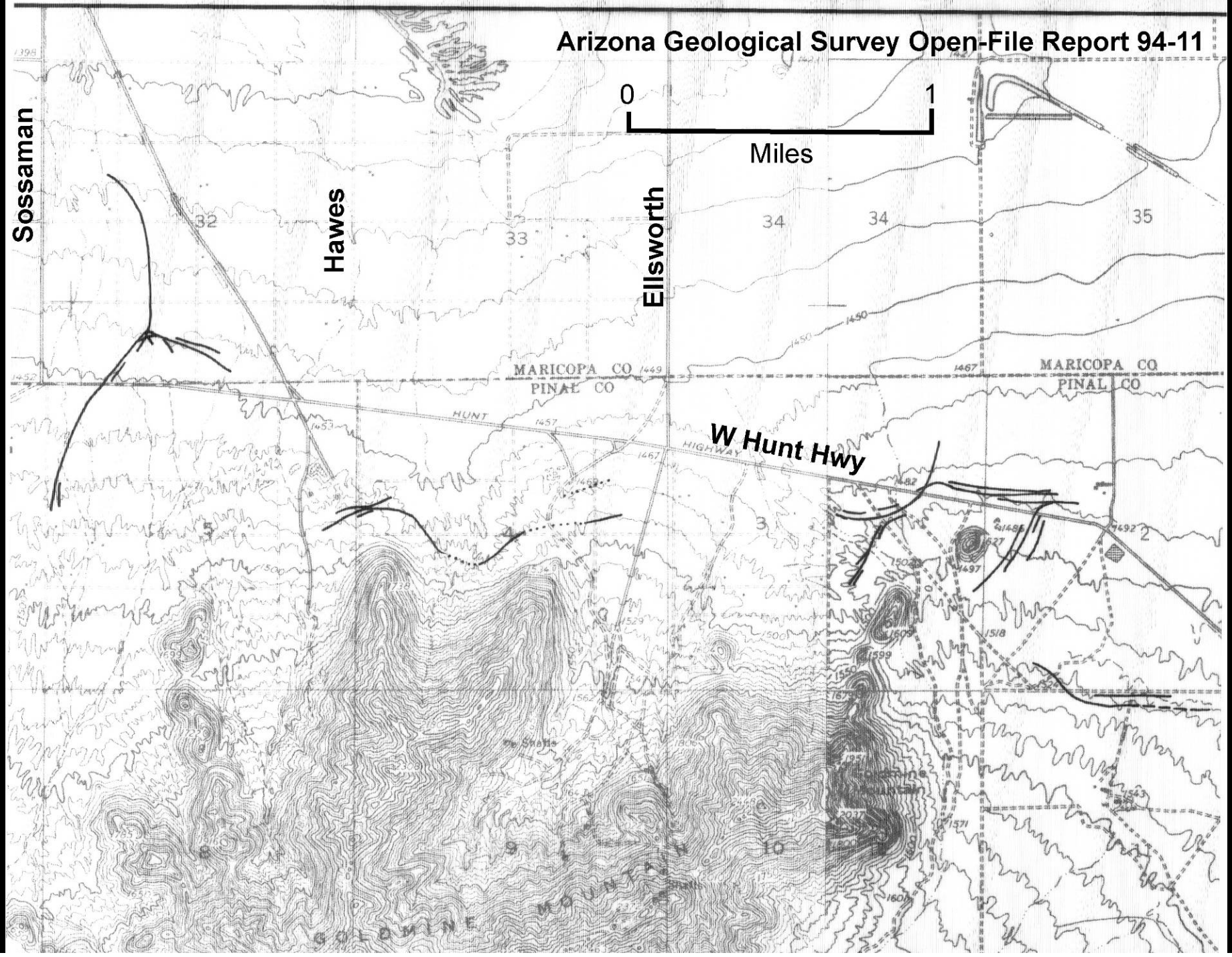
Hawes

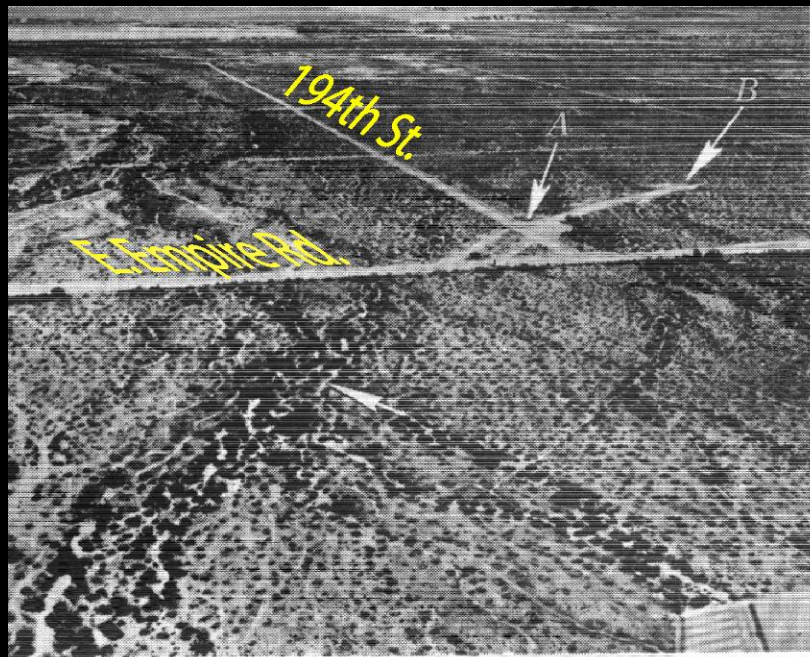
Ellsworth

MARICOPA CO
PINAL CO

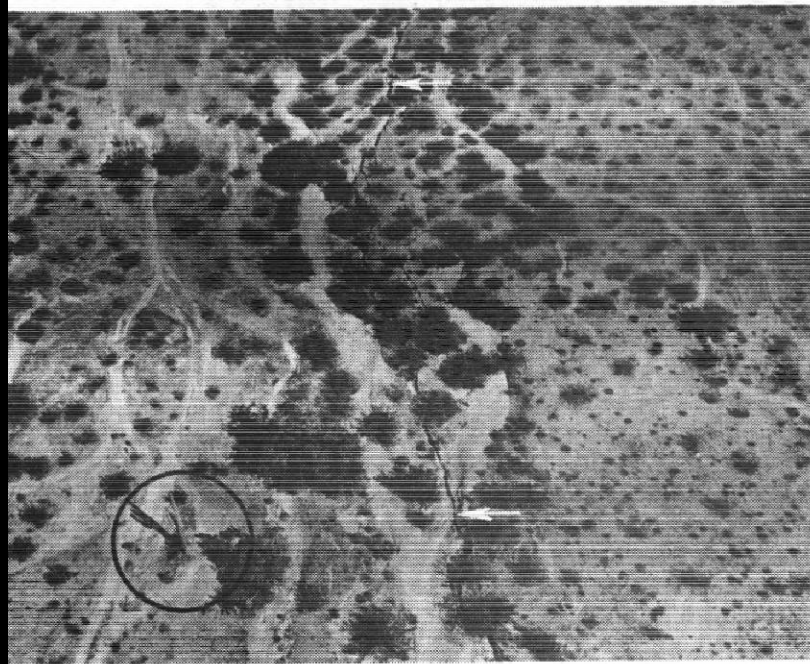
MARICOPA CO
PINAL CO

W Hunt Hwy
HIGHWAY





A



B

USGS Circular 466, 1962

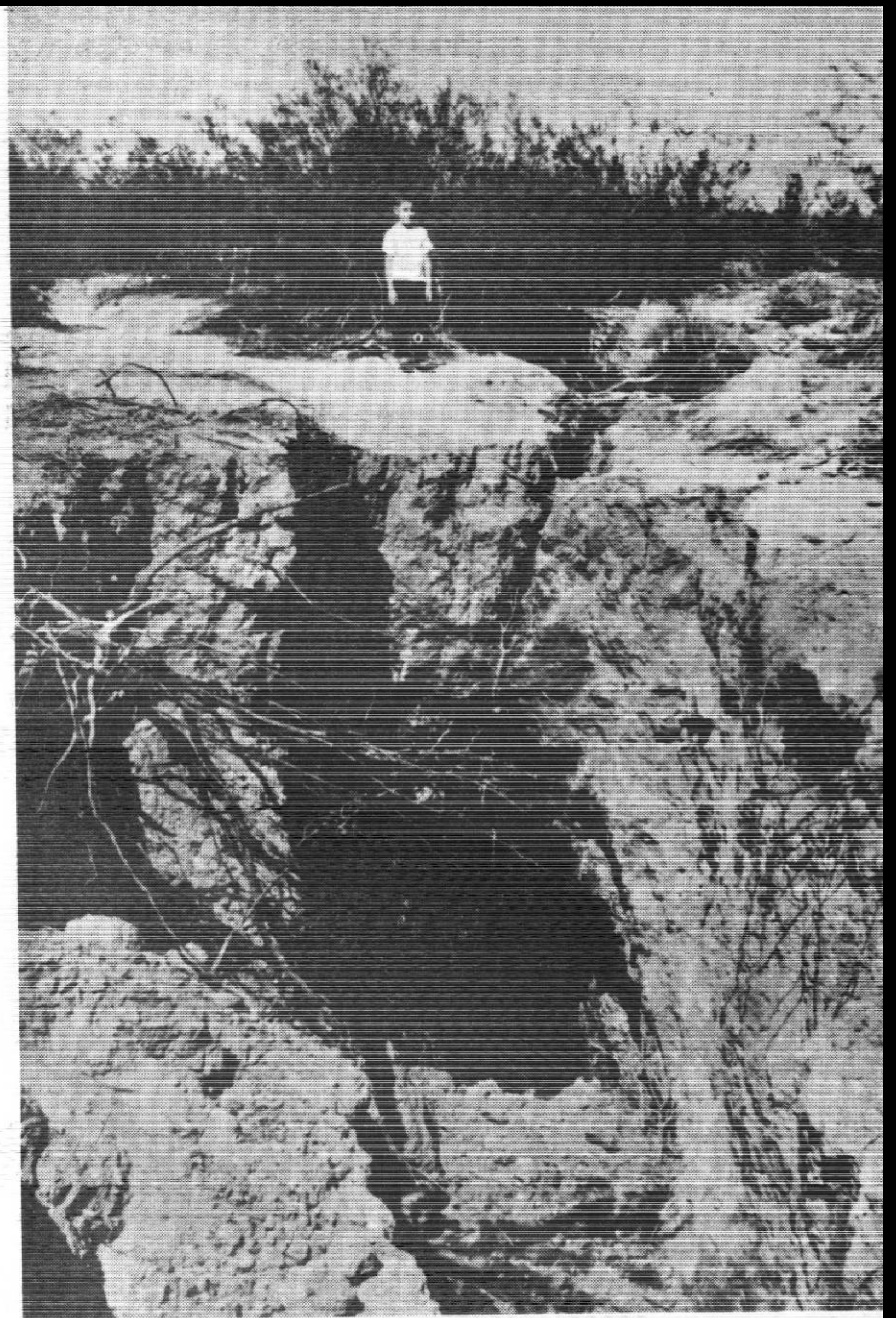


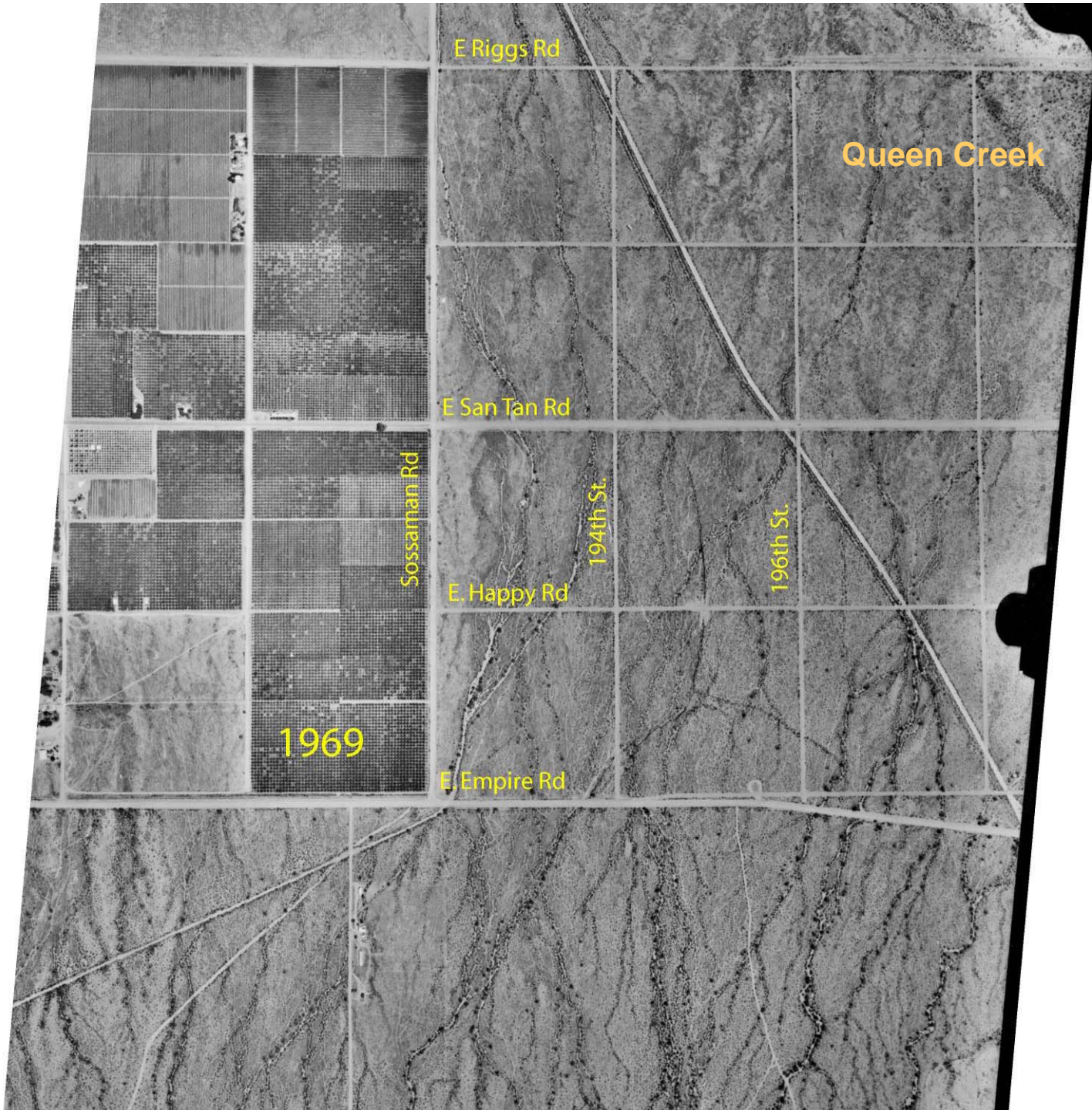
Figure 5.—Magnitude of fissure opening near Chandler Heights viewed from site marked by arrow A in figure 4A. Photographed on September 16, 1961, by D.E. Peterson.

Harquahala Plain





Harquahala
Plain





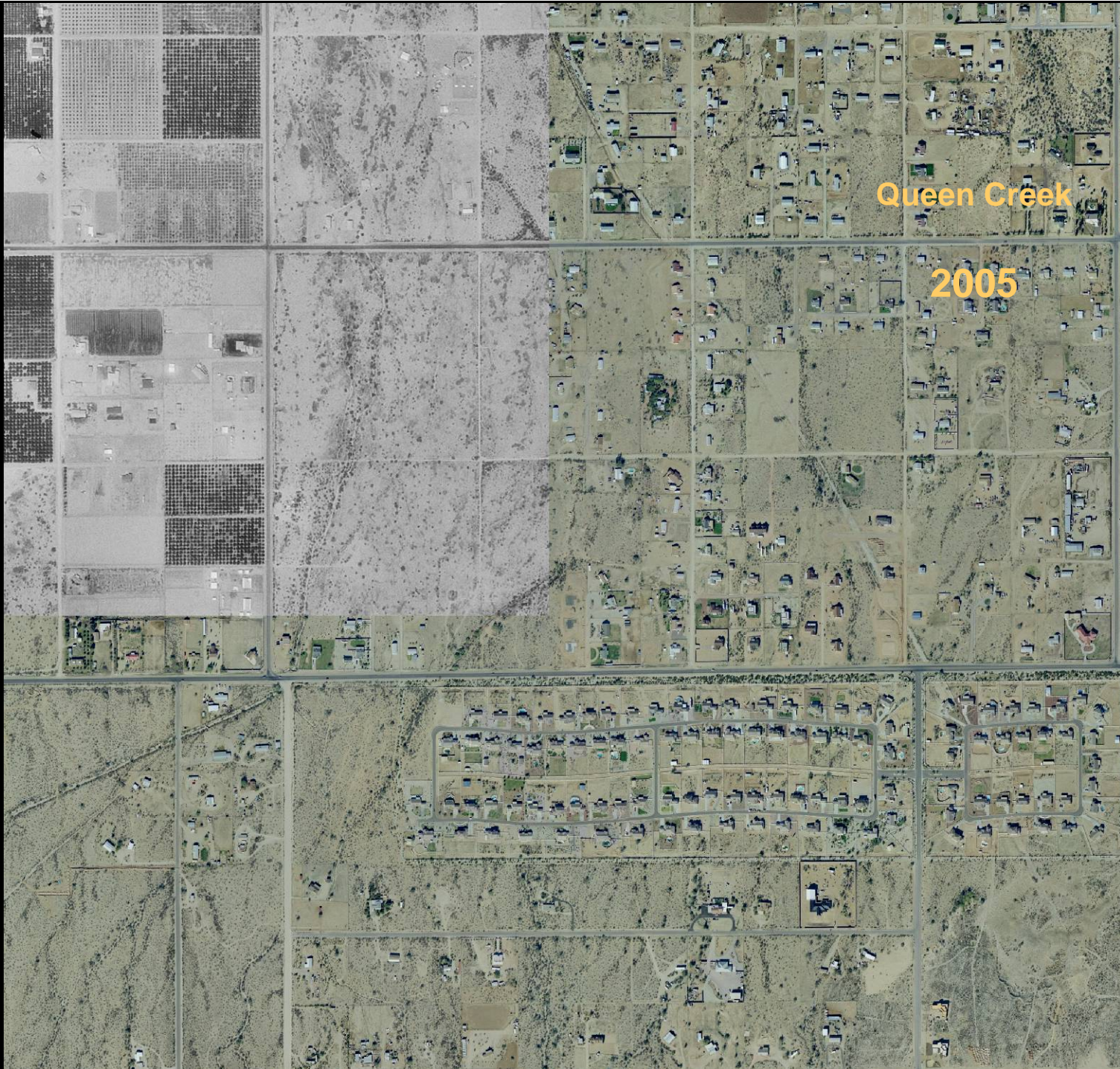
Queen Creek

1997



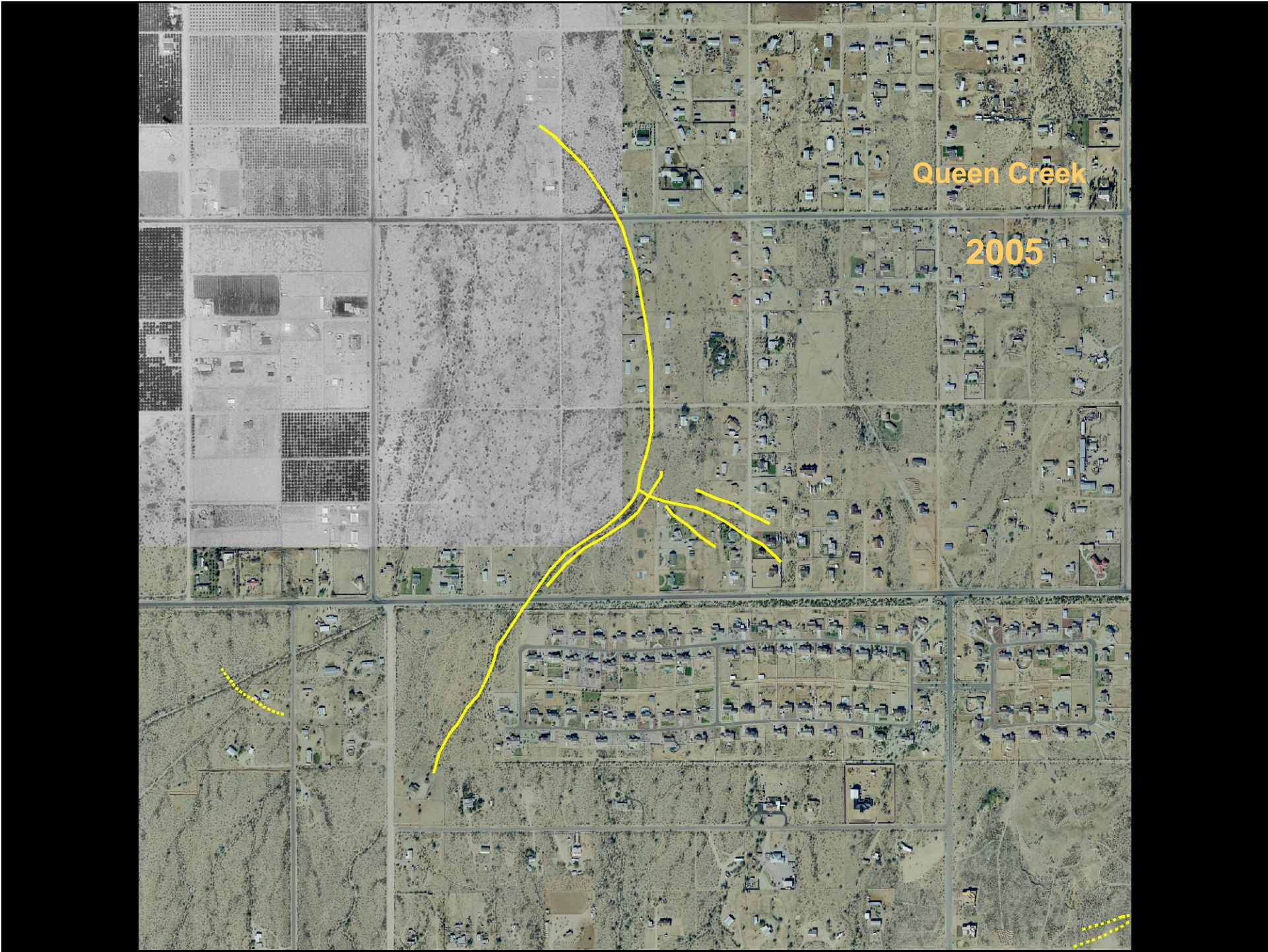
Queen Creek

1997



Queen Creek

2005



Queen Creek

2005

SE of Queen Creek

1992



SE of Queen Creek

1992



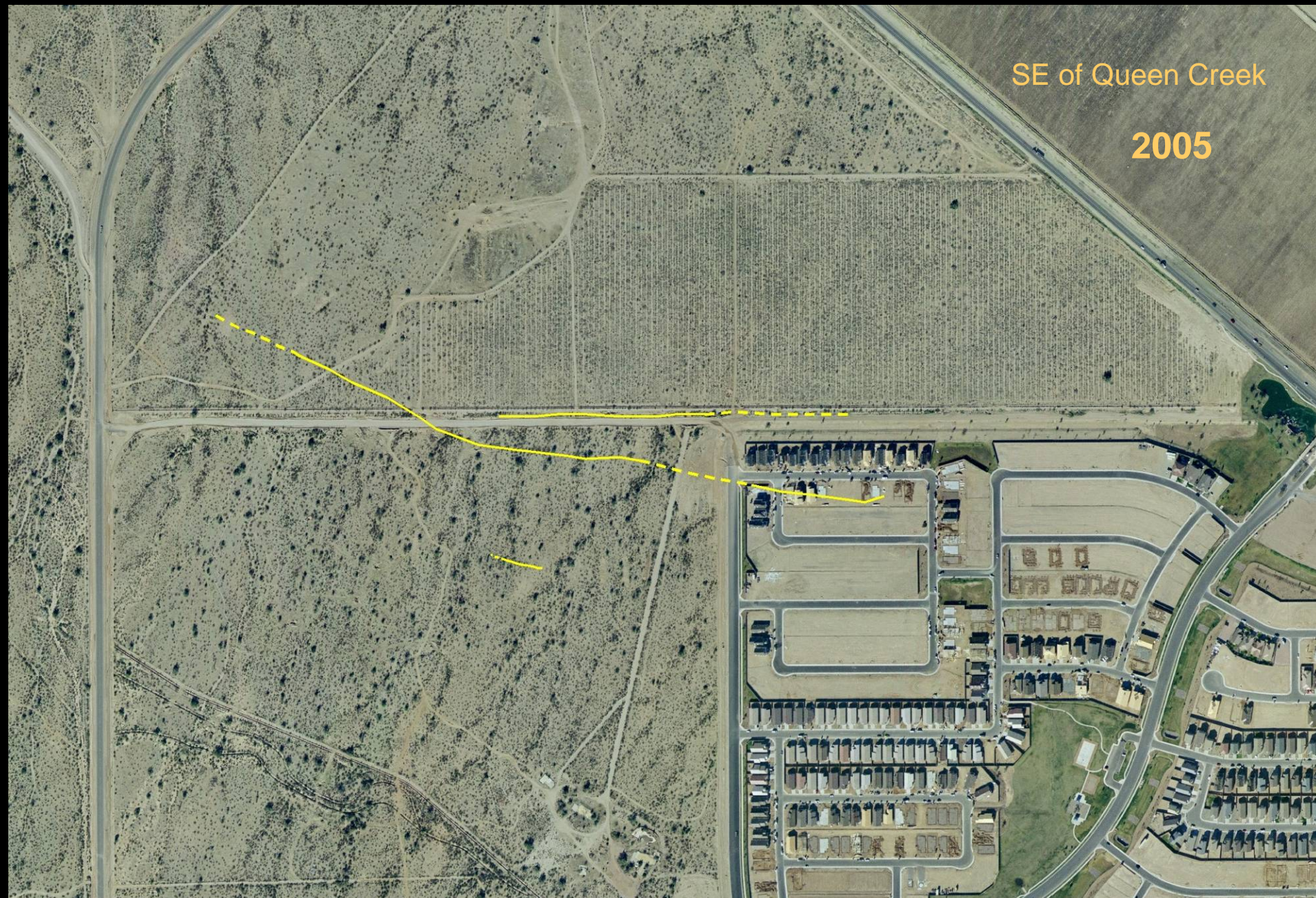
SE of Queen Creek

2004



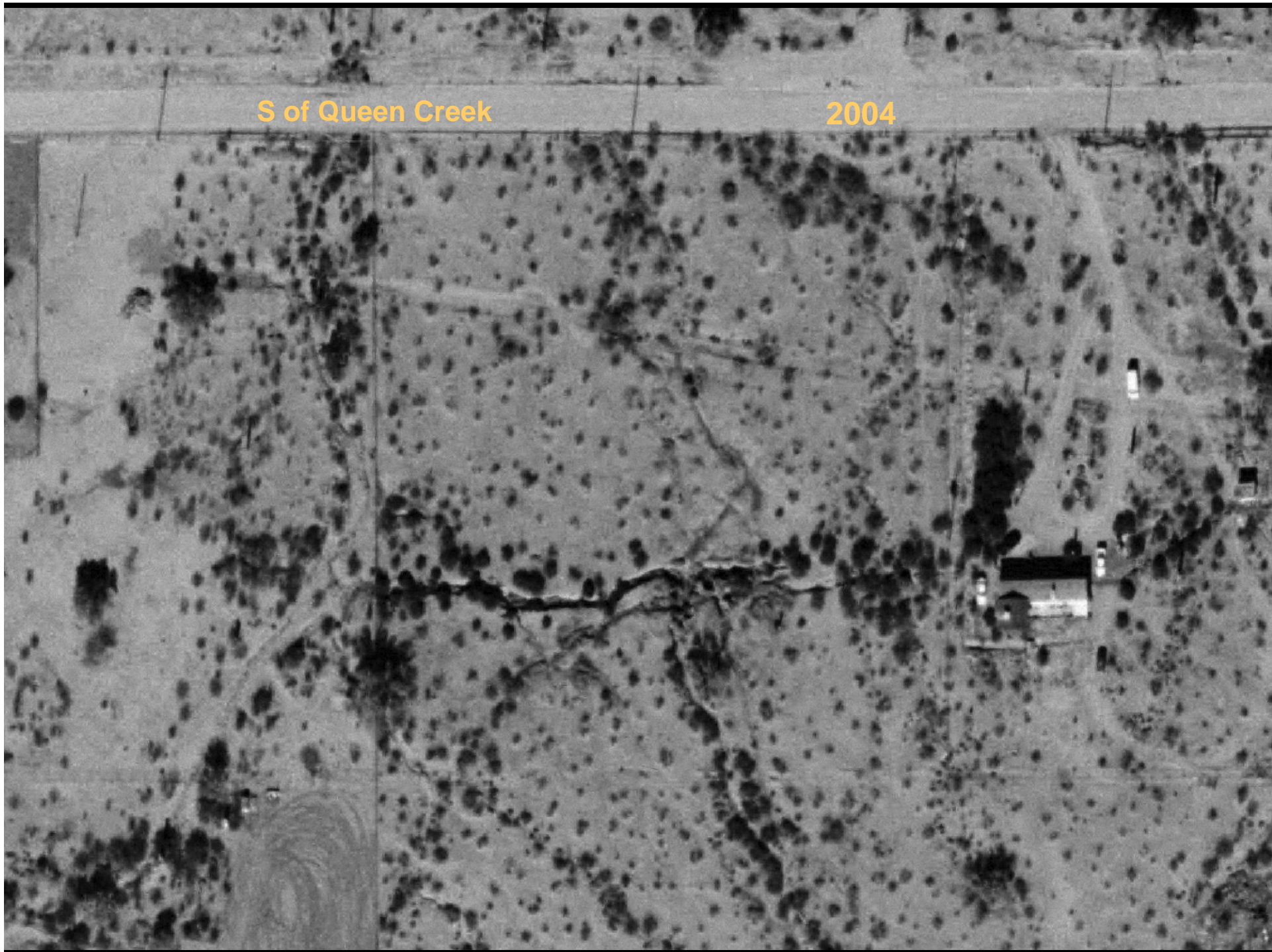
SE of Queen Creek

2005



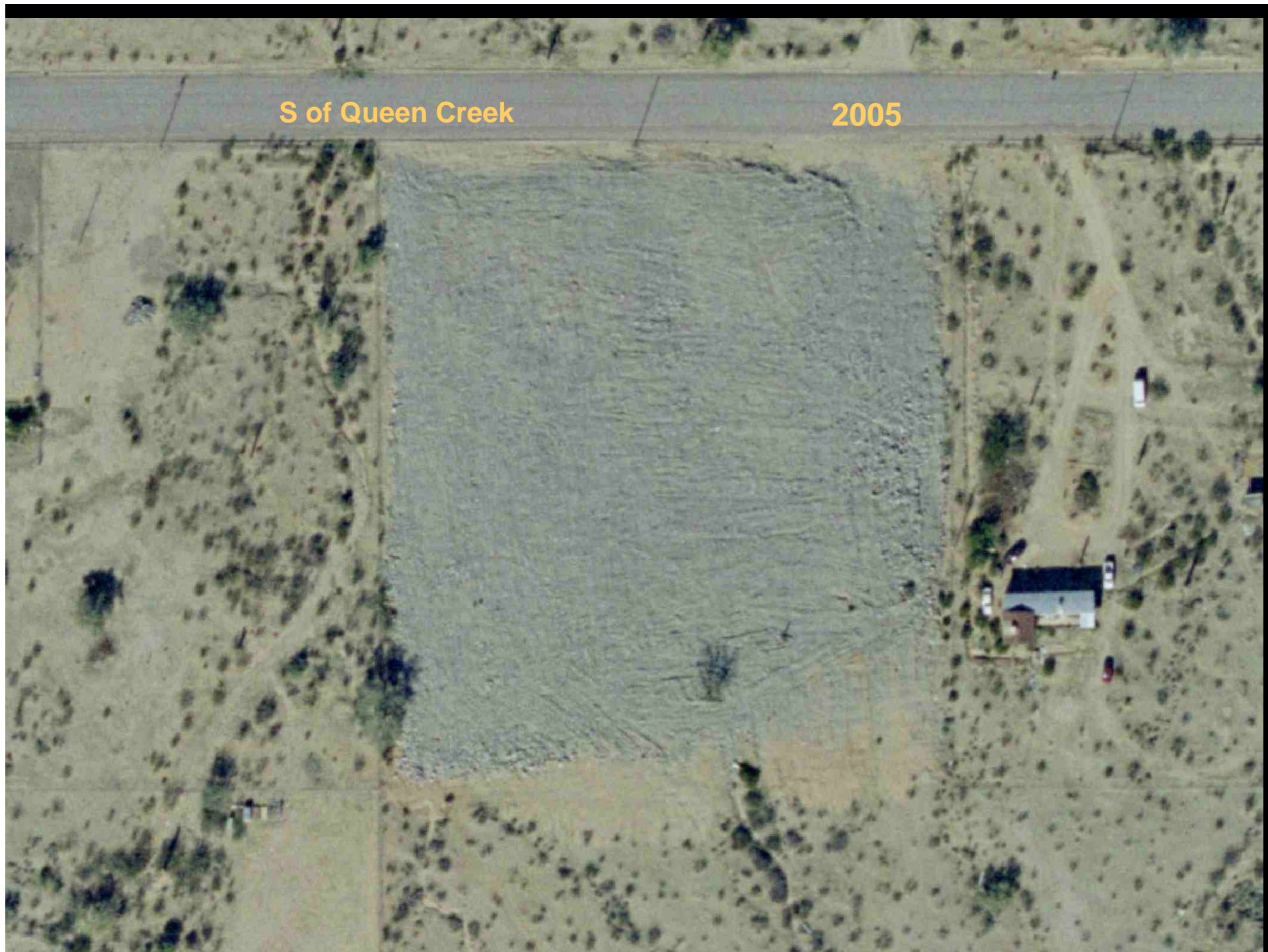
S of Queen Creek

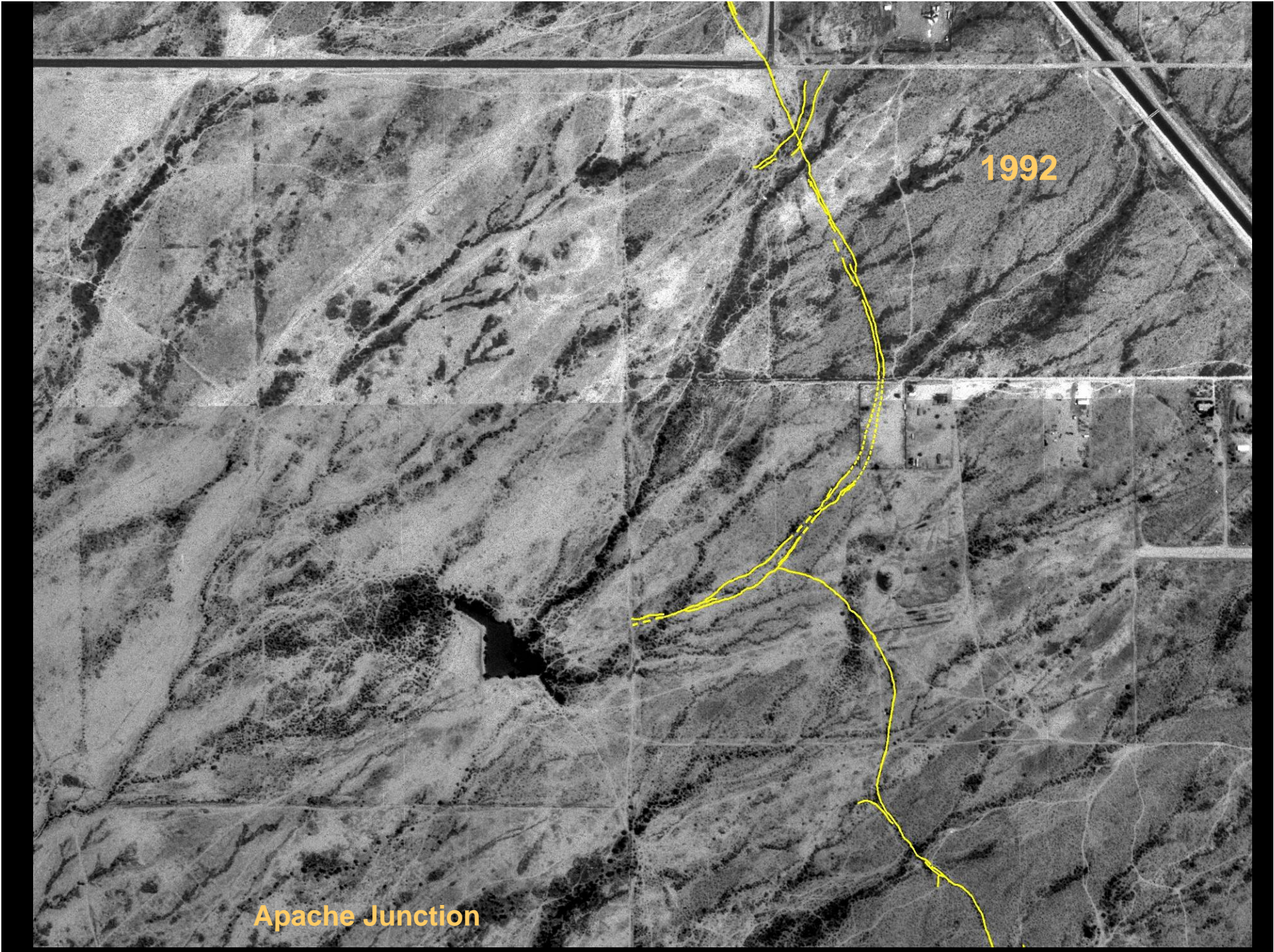
2004



S of Queen Creek

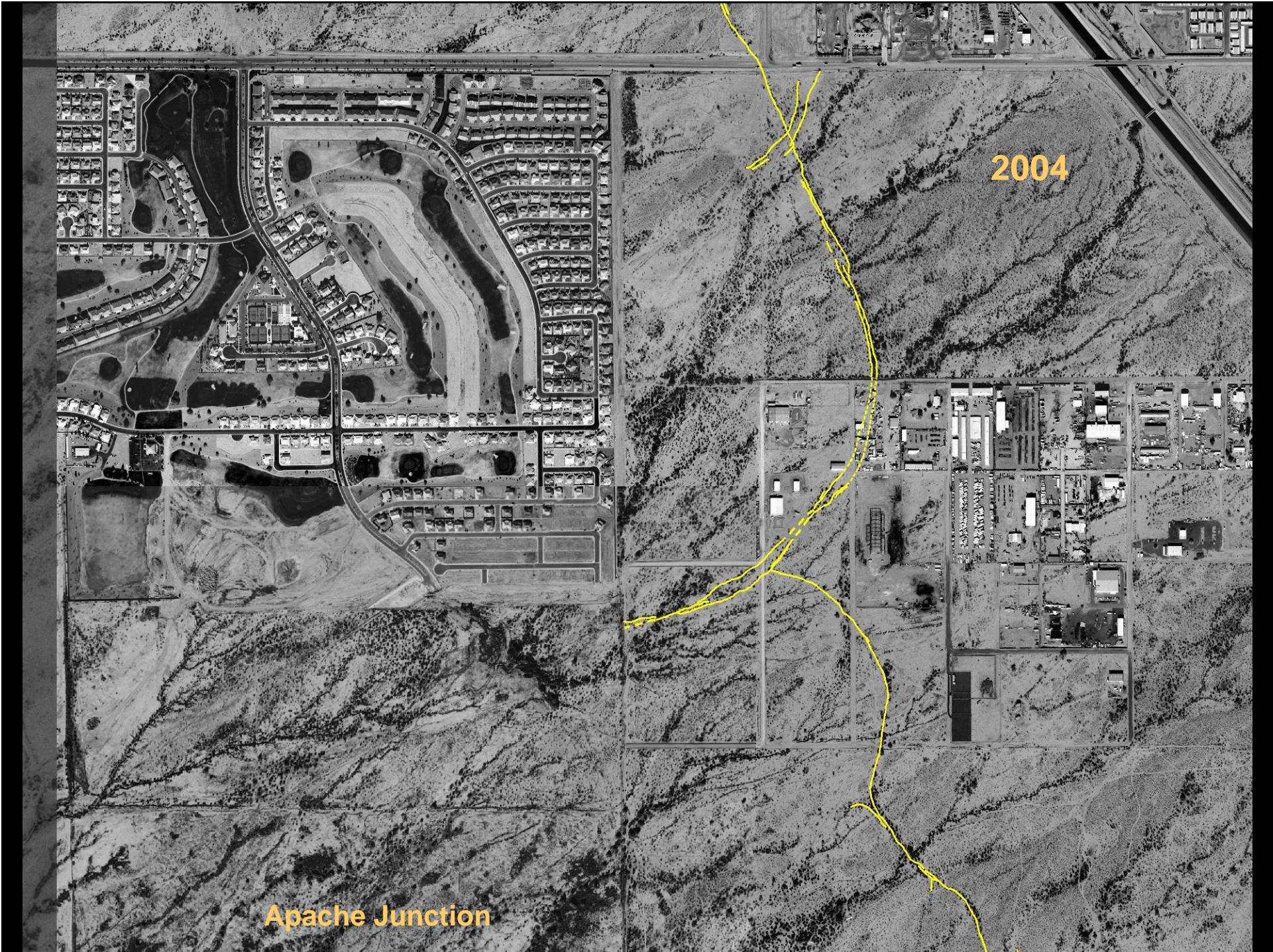
2005





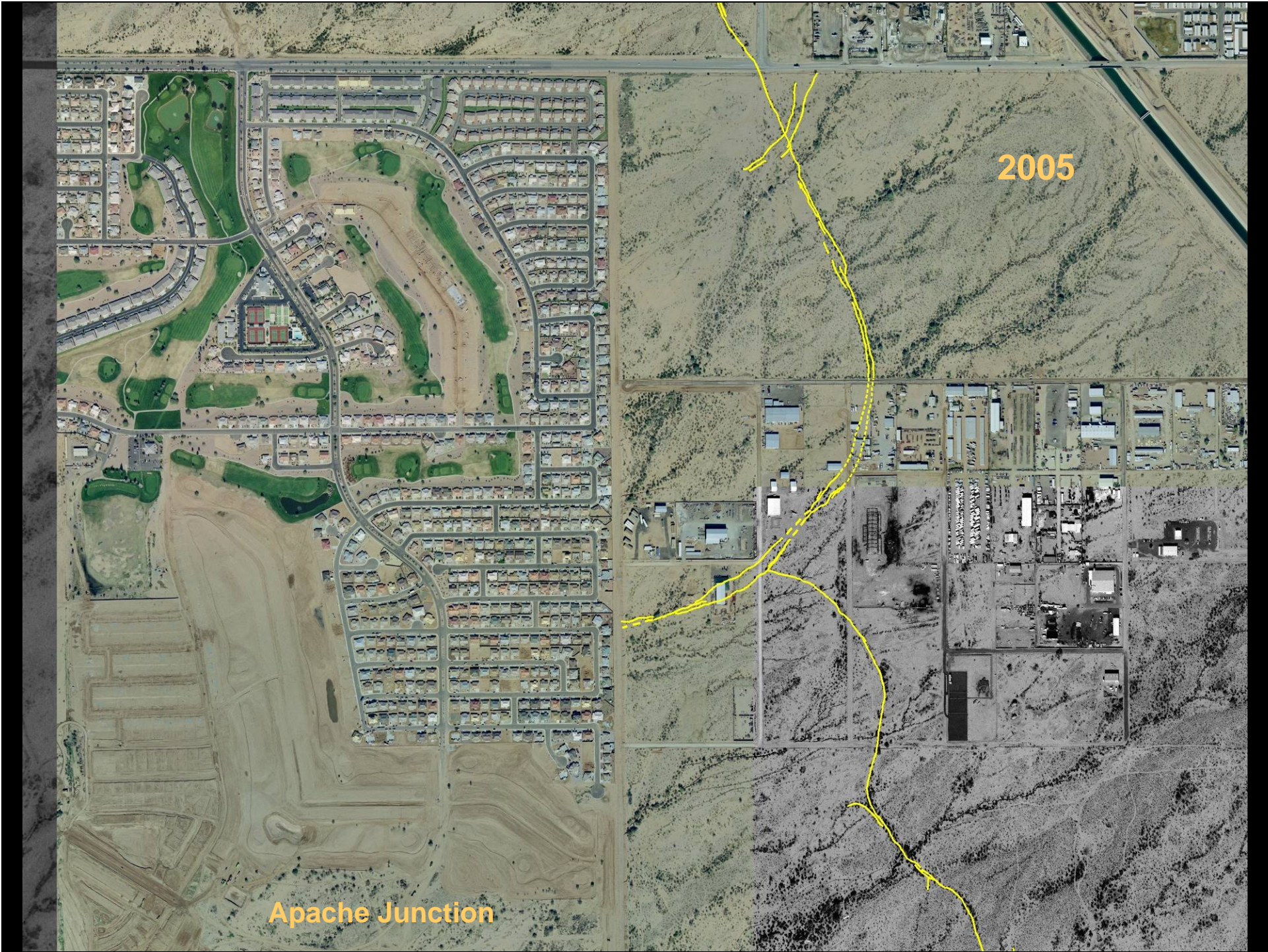
1992

Apache Junction



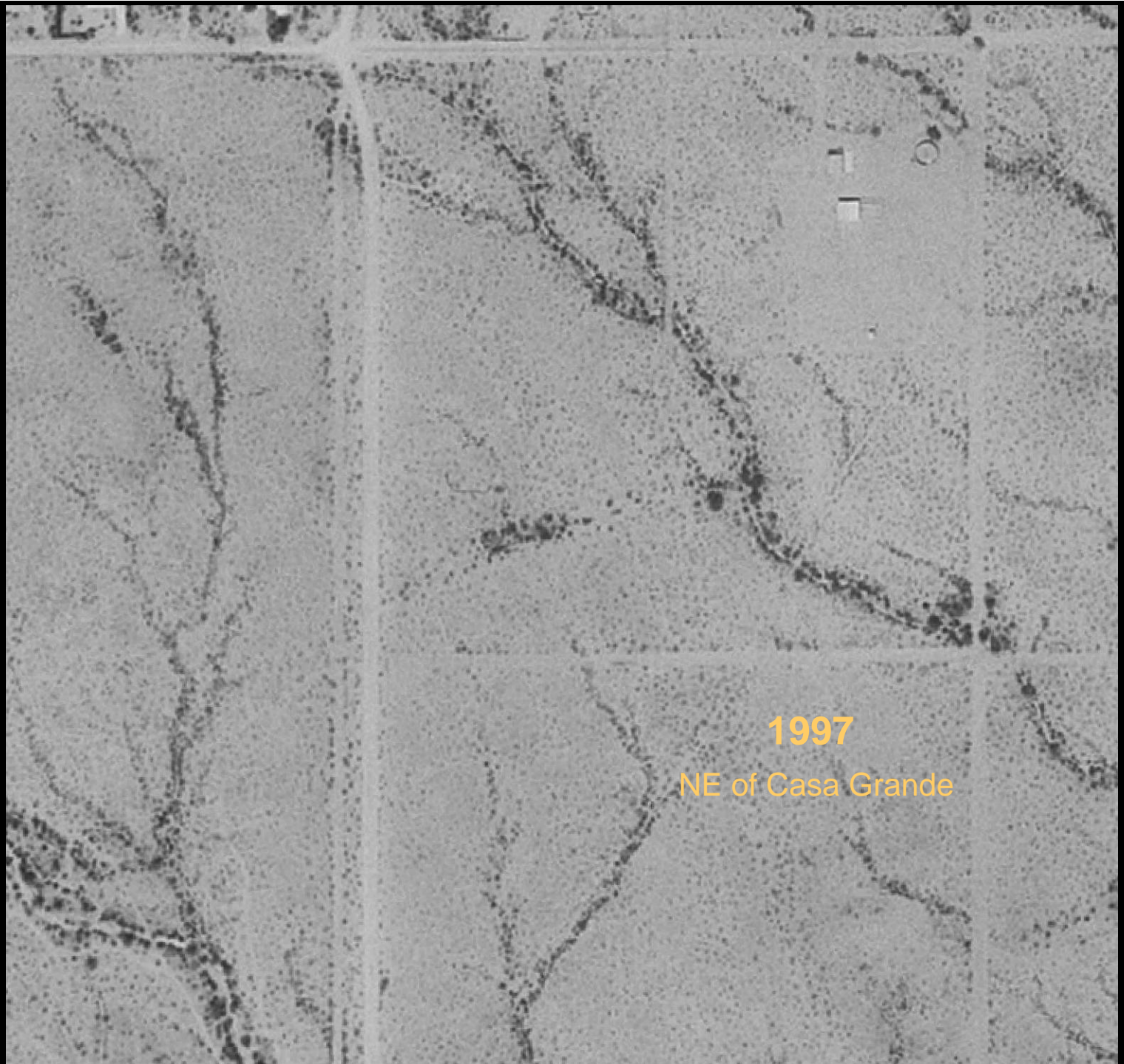
2004

Apache Junction



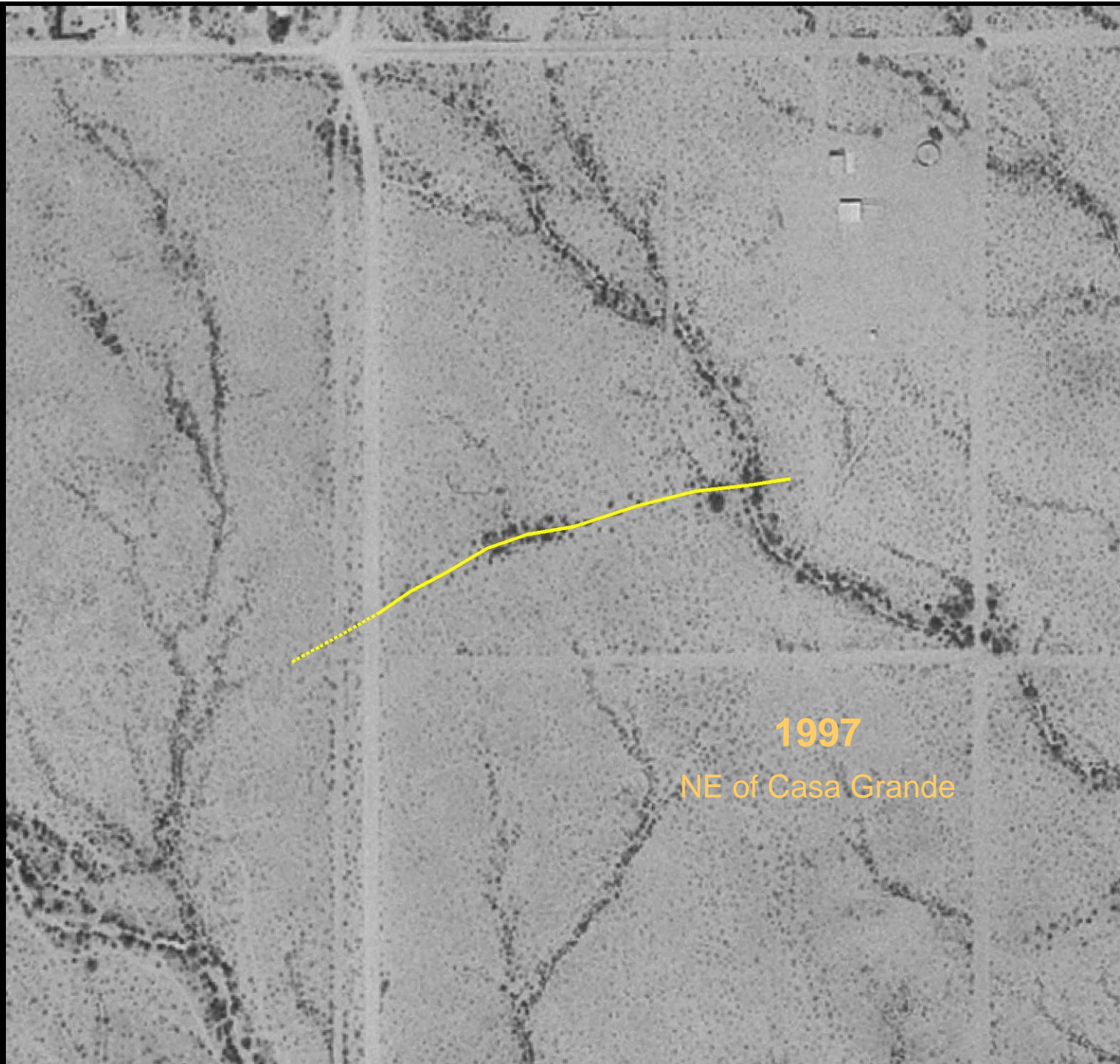
2005

Apache Junction



1997

NE of Casa Grande



1997

NE of Casa Grande



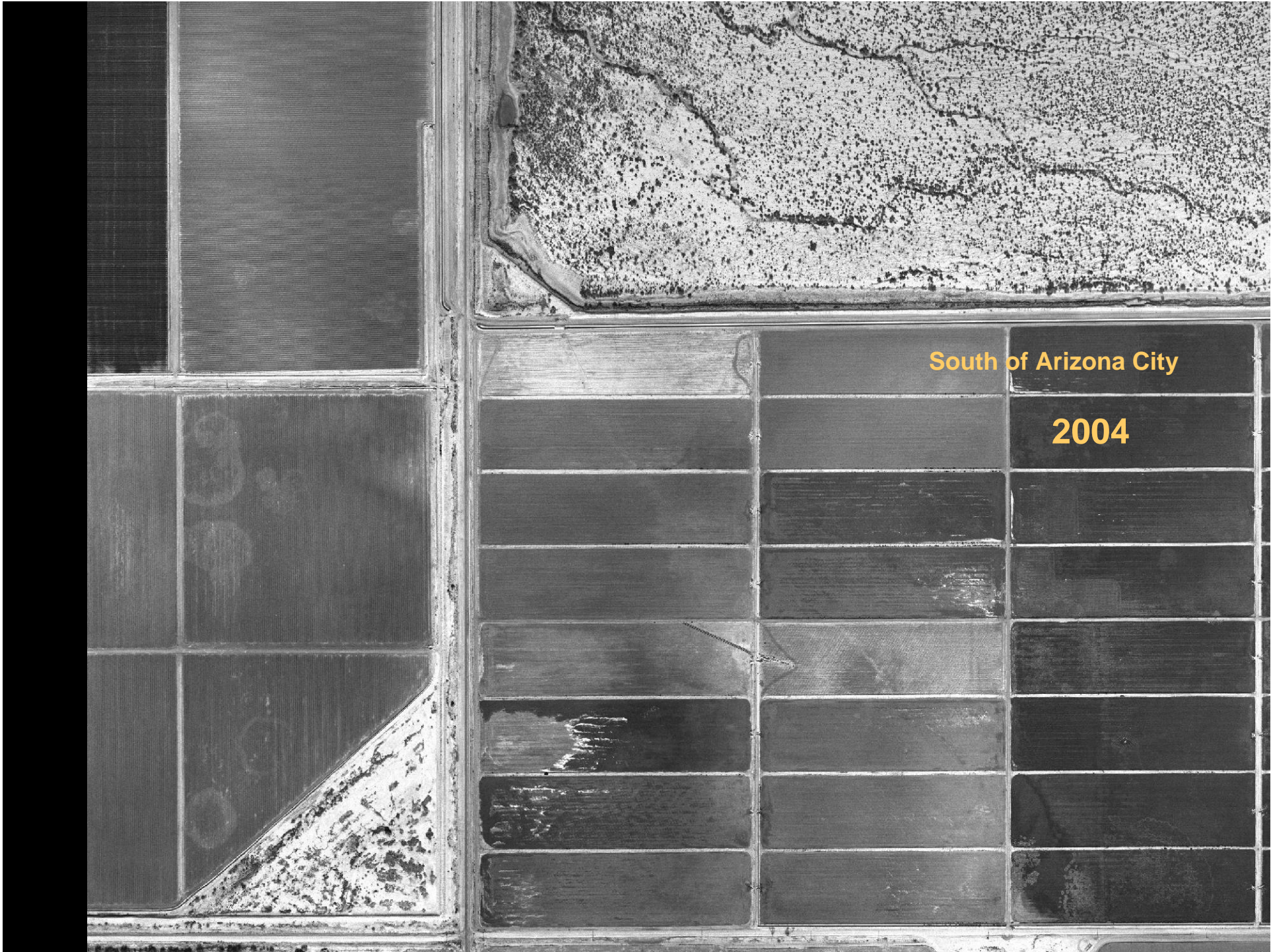
2004

NE of Casa Grande



South of Arizona City

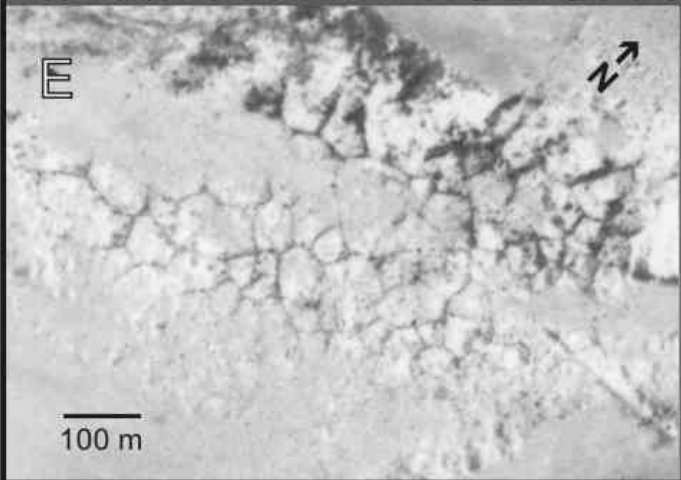
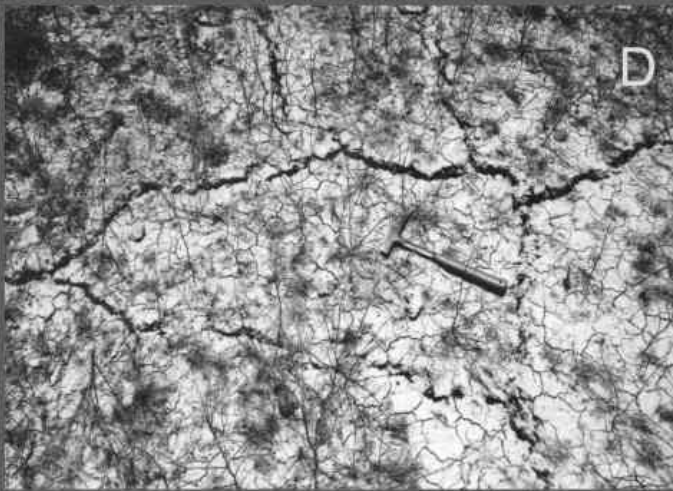
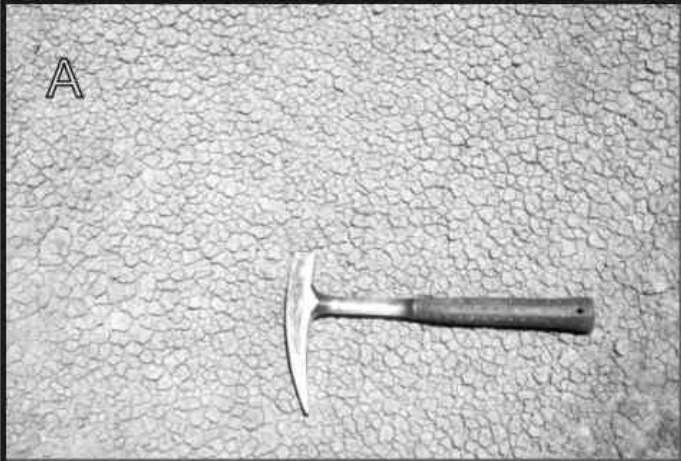
1997



South of Arizona City

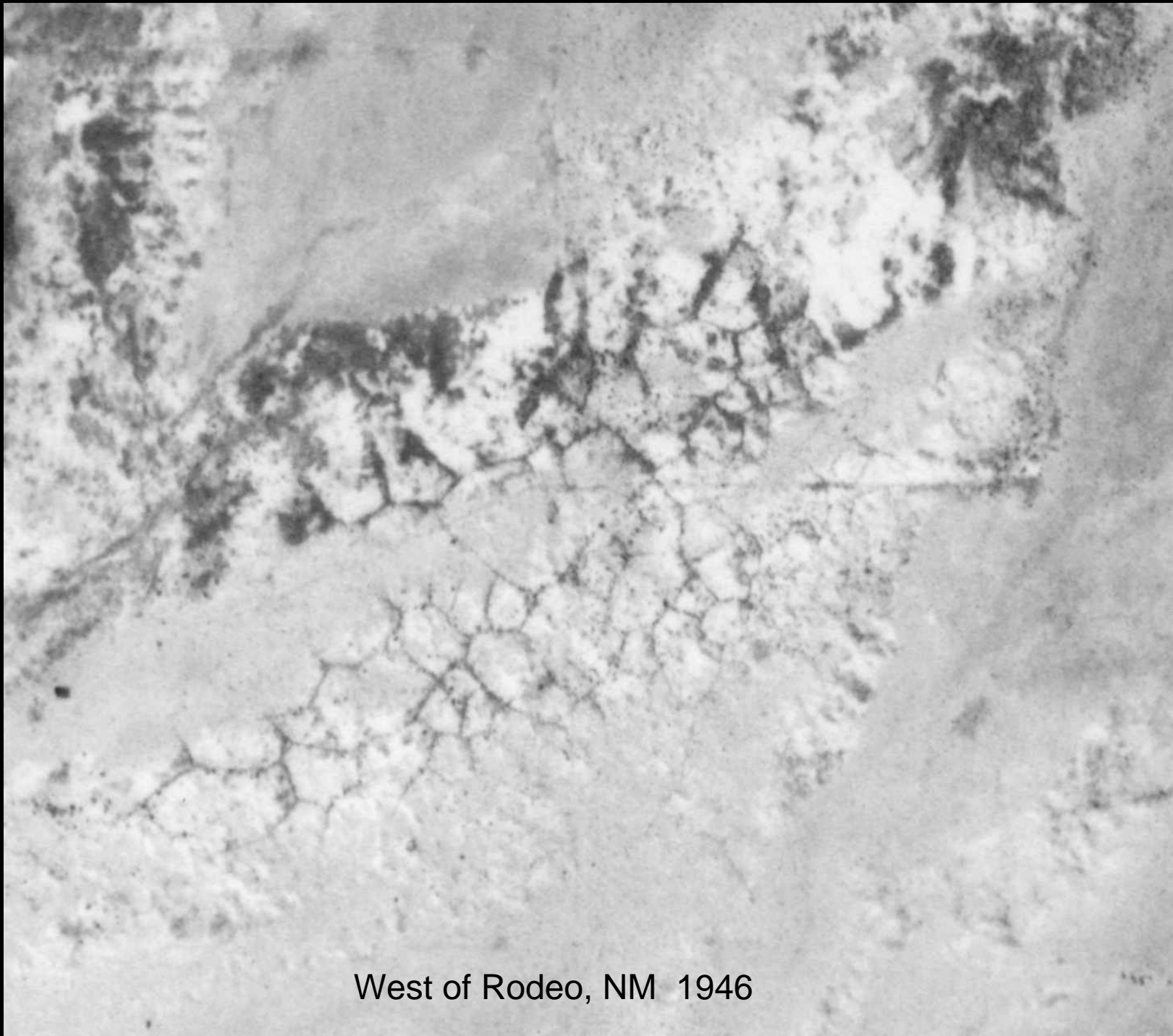
2004



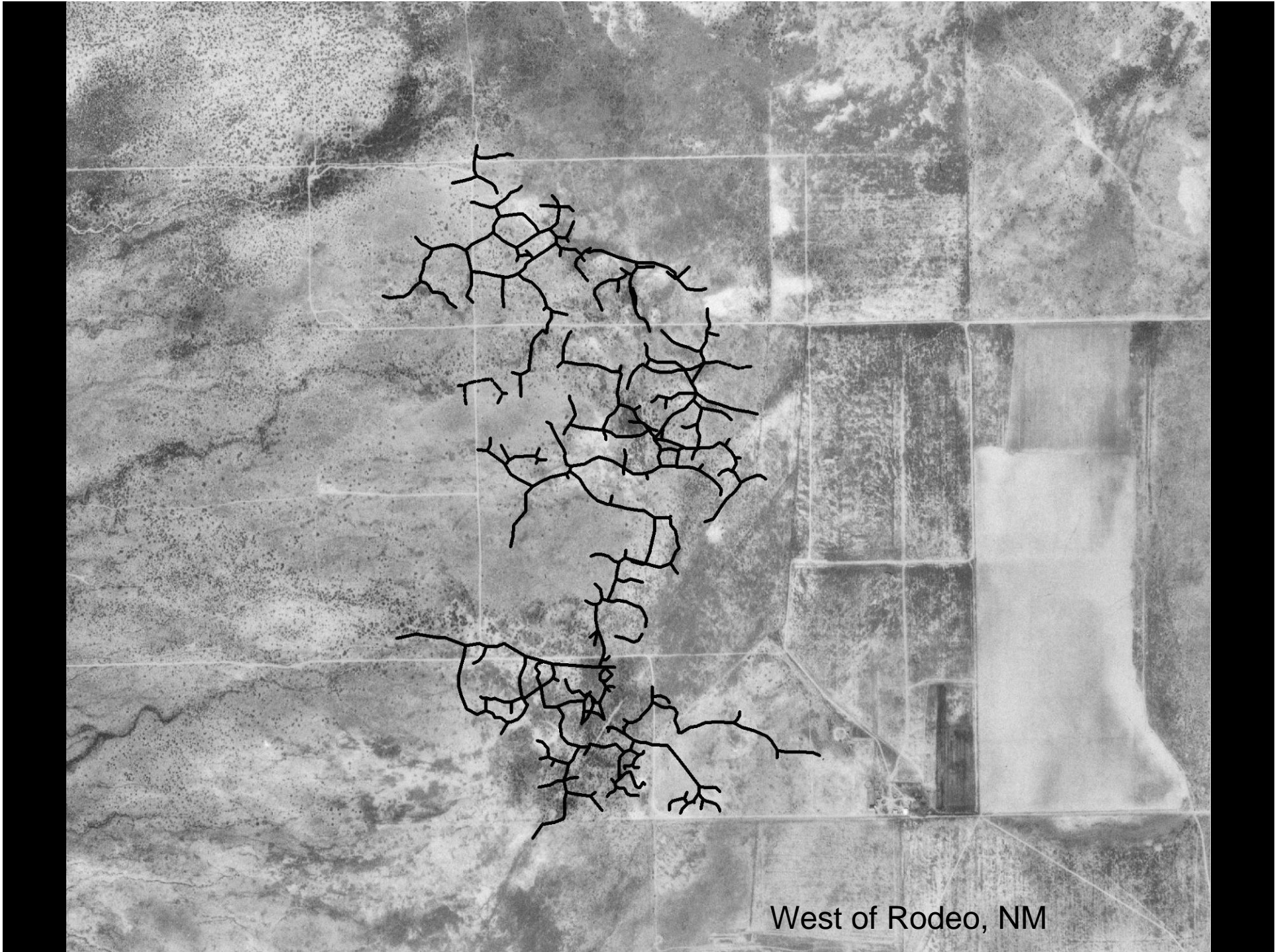




Bonita-Klondyke Road 1999



West of Rodeo, NM 1946



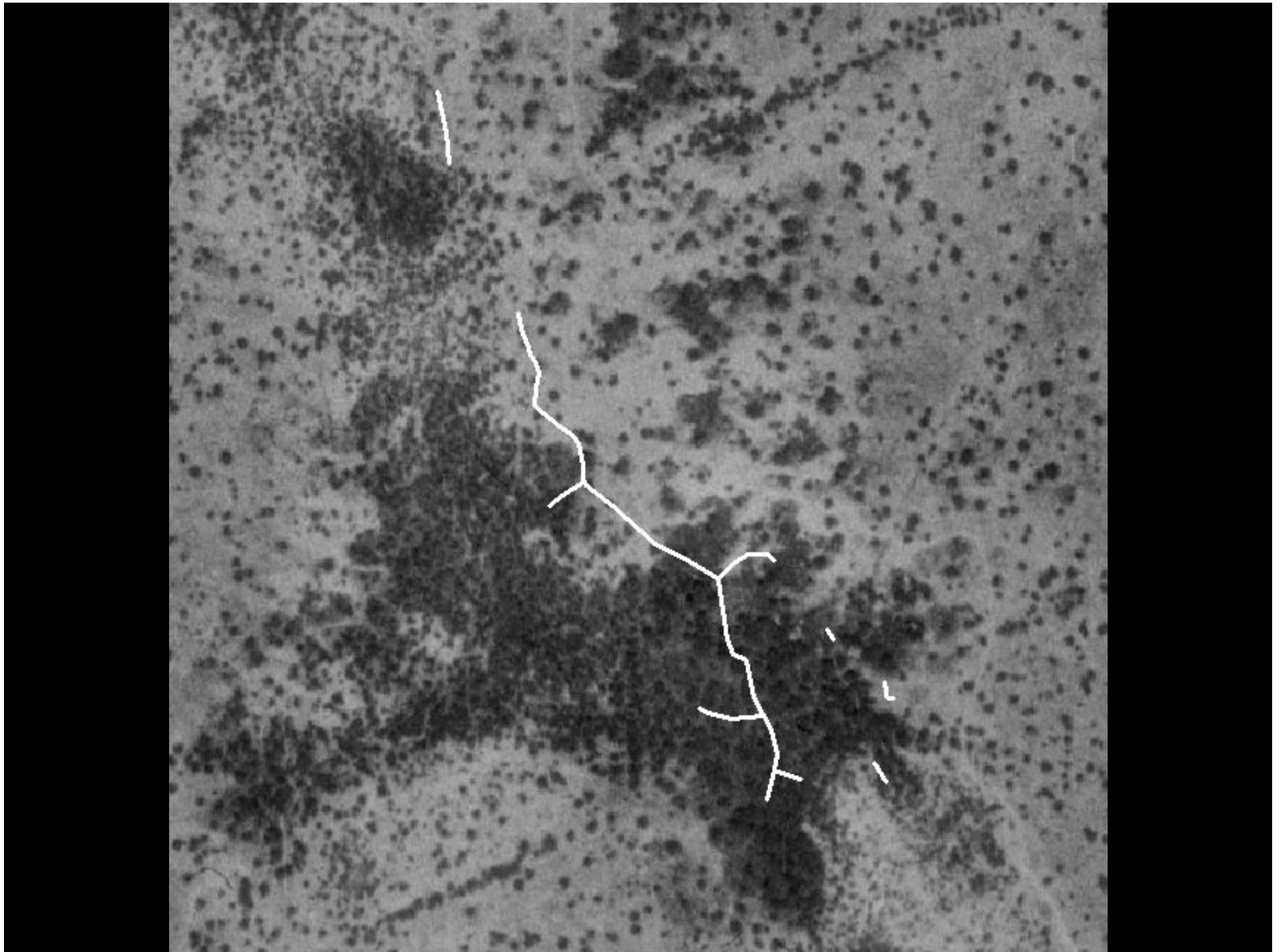
West of Rodeo, NM







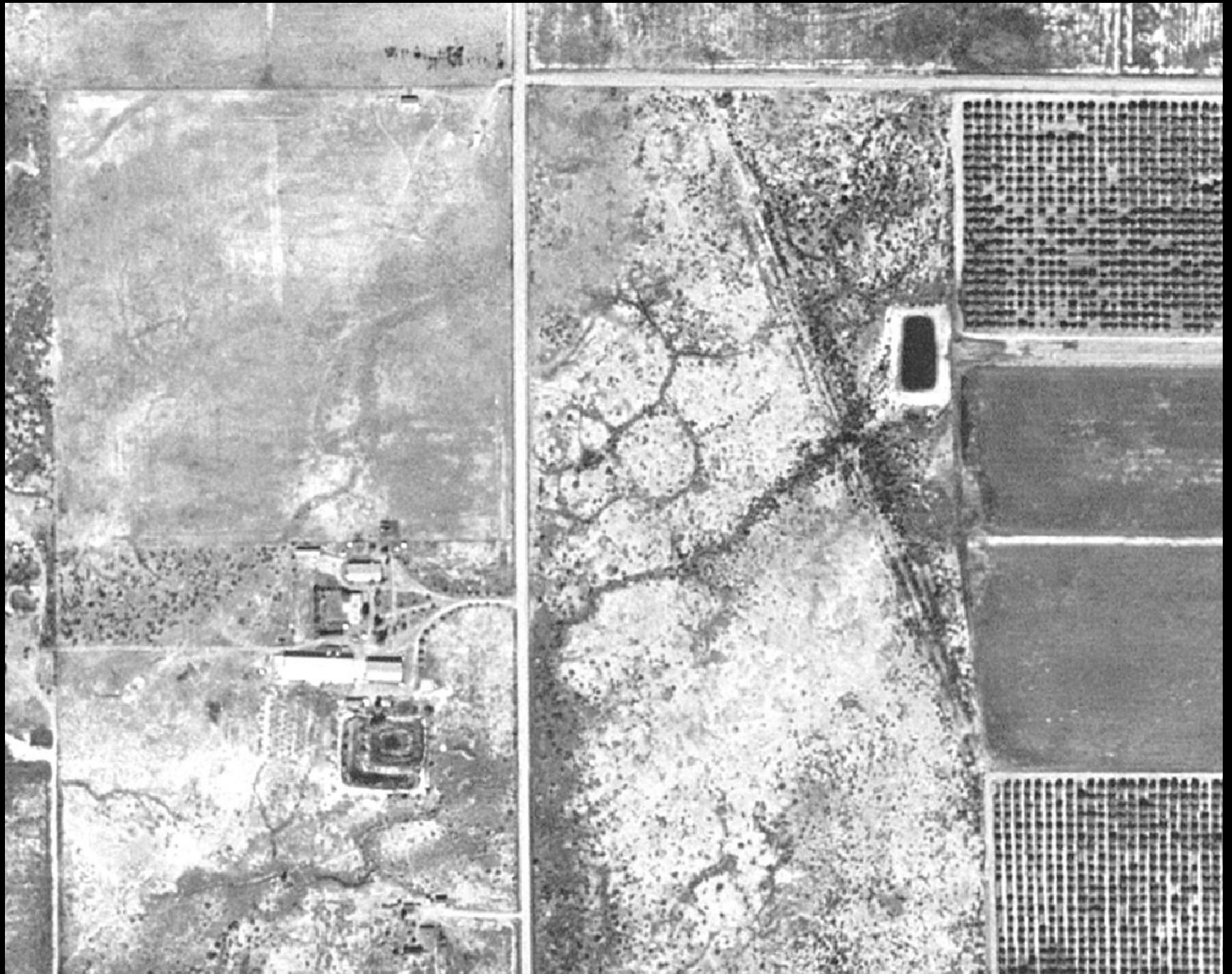






Tanque – San Simon Valley







W Thompson Rd

N Martinson Rd

W Desert Sky Ln



© 2005 Google

Image © 2006 DigitalGlobe

© 2006 Navteq

Streaming ||||| 100%

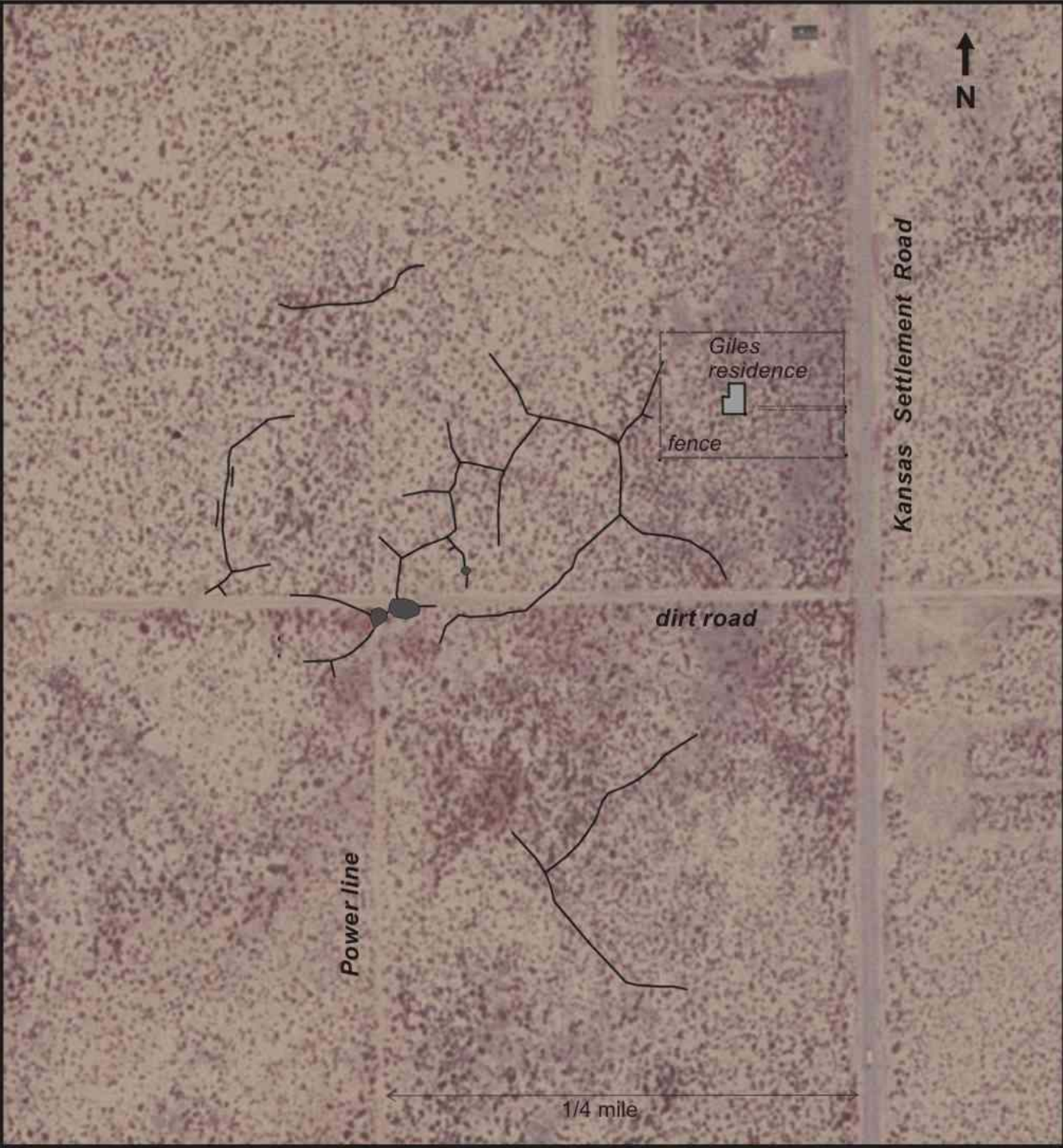
Pointer 31°42'41.40" N 109°42'11.84" W

Eye alt 3283 ft

**NOTICE
HAZARD AHEAD
SINK HOLE
ROAD OUT**







Kansas Settlement Road

Giles residence
fence

dirt road

Power line

1/4 mile



Nickels Road, looking south, 7-26-04



Nickels Road, looking north, 7-26-04



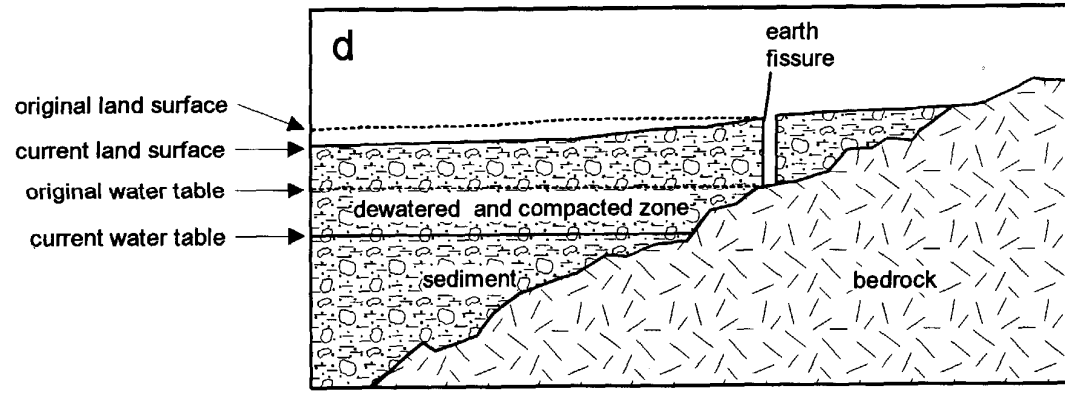


N of Willcox

USGS
Photo
1996

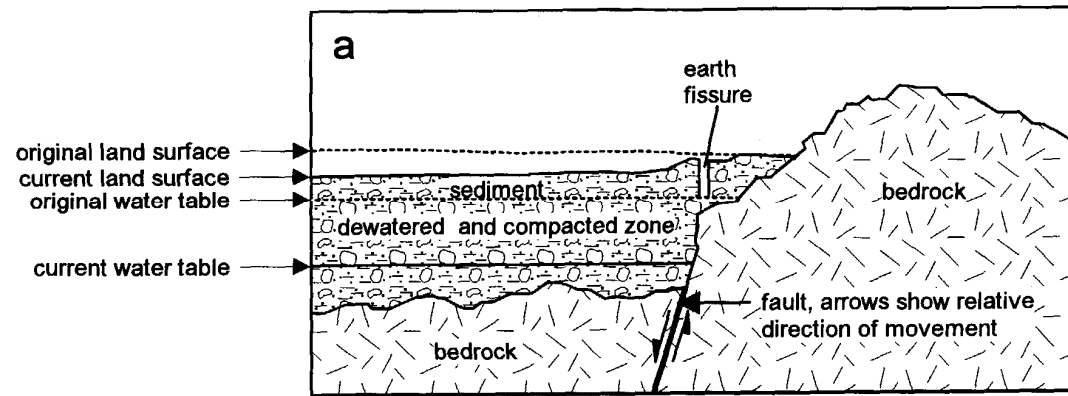


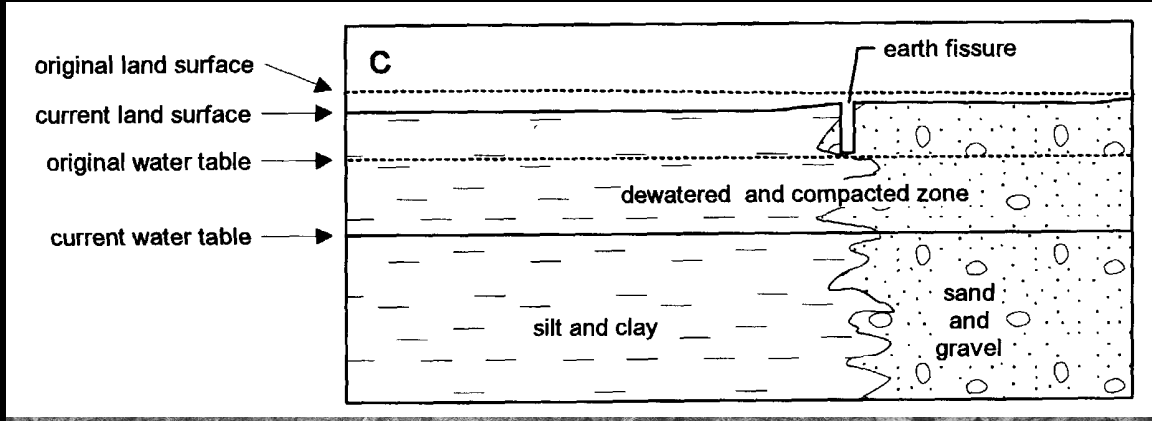
Holzer, 1980
USGS Map
MF-1156

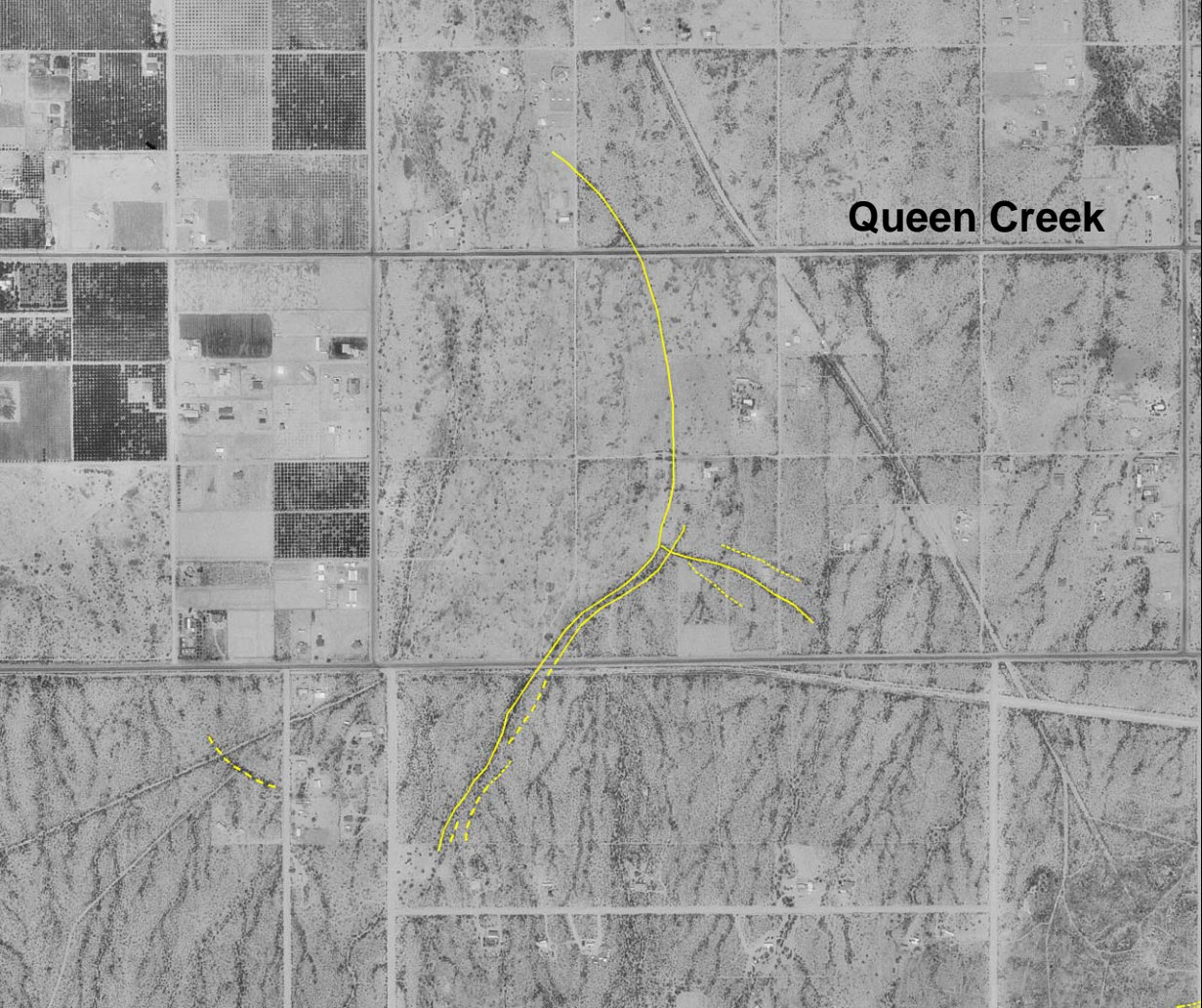
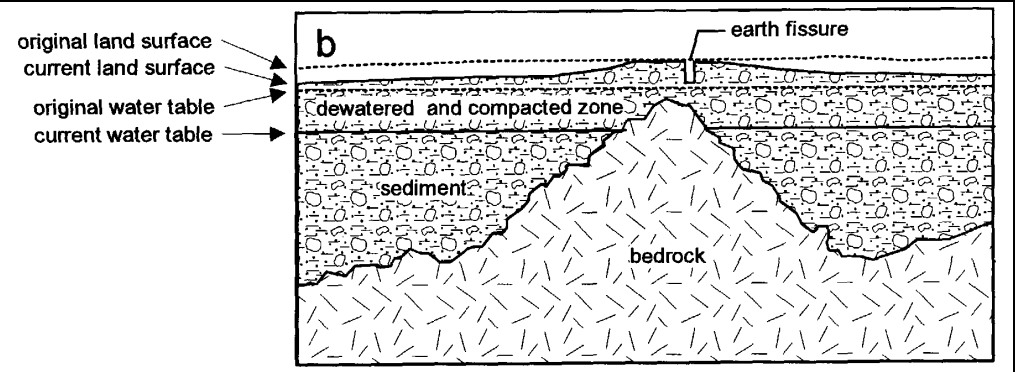


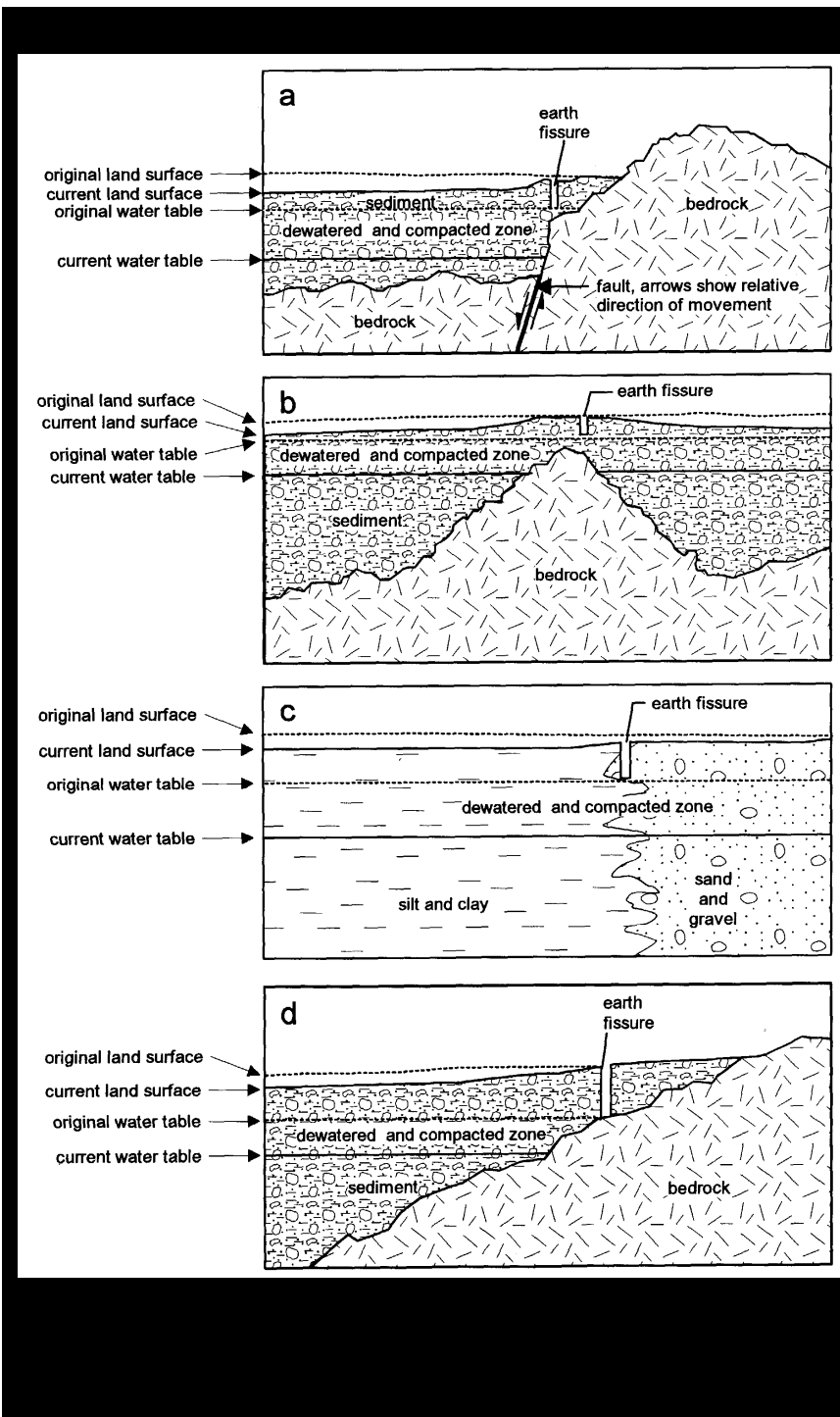
Rogers fissure – Harquahala Plains



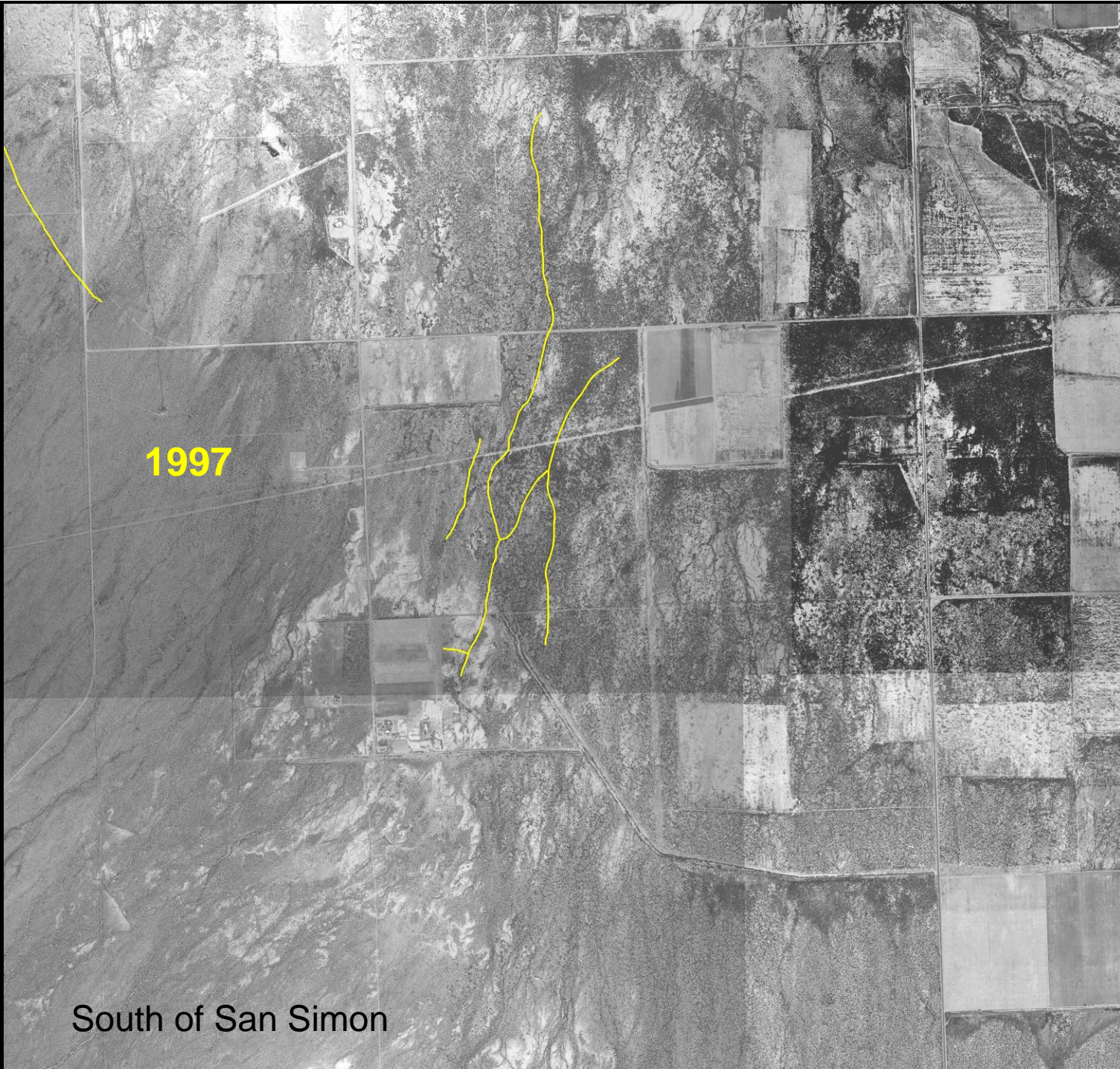






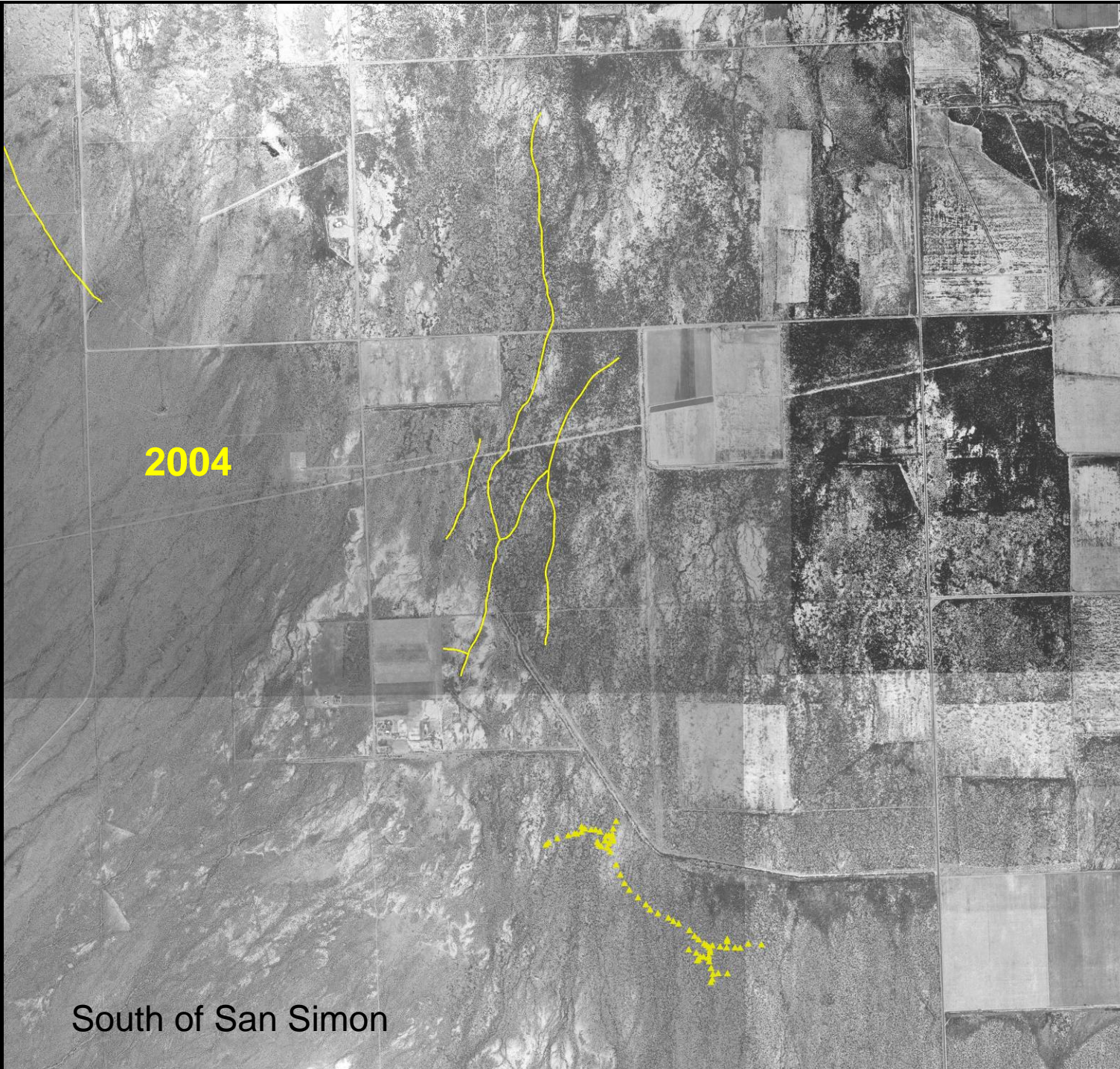


West of Rodeo, NM



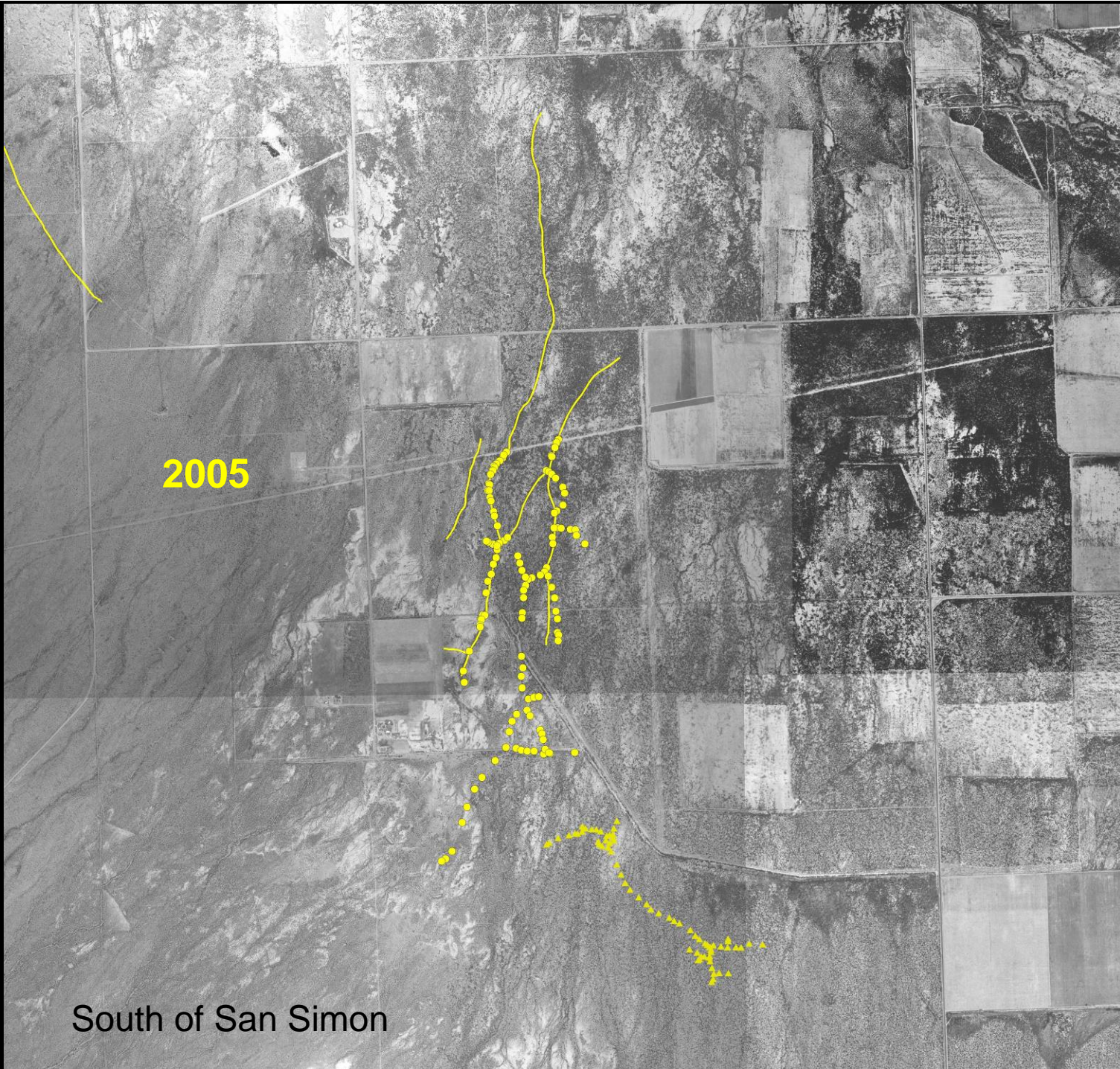
1997

South of San Simon



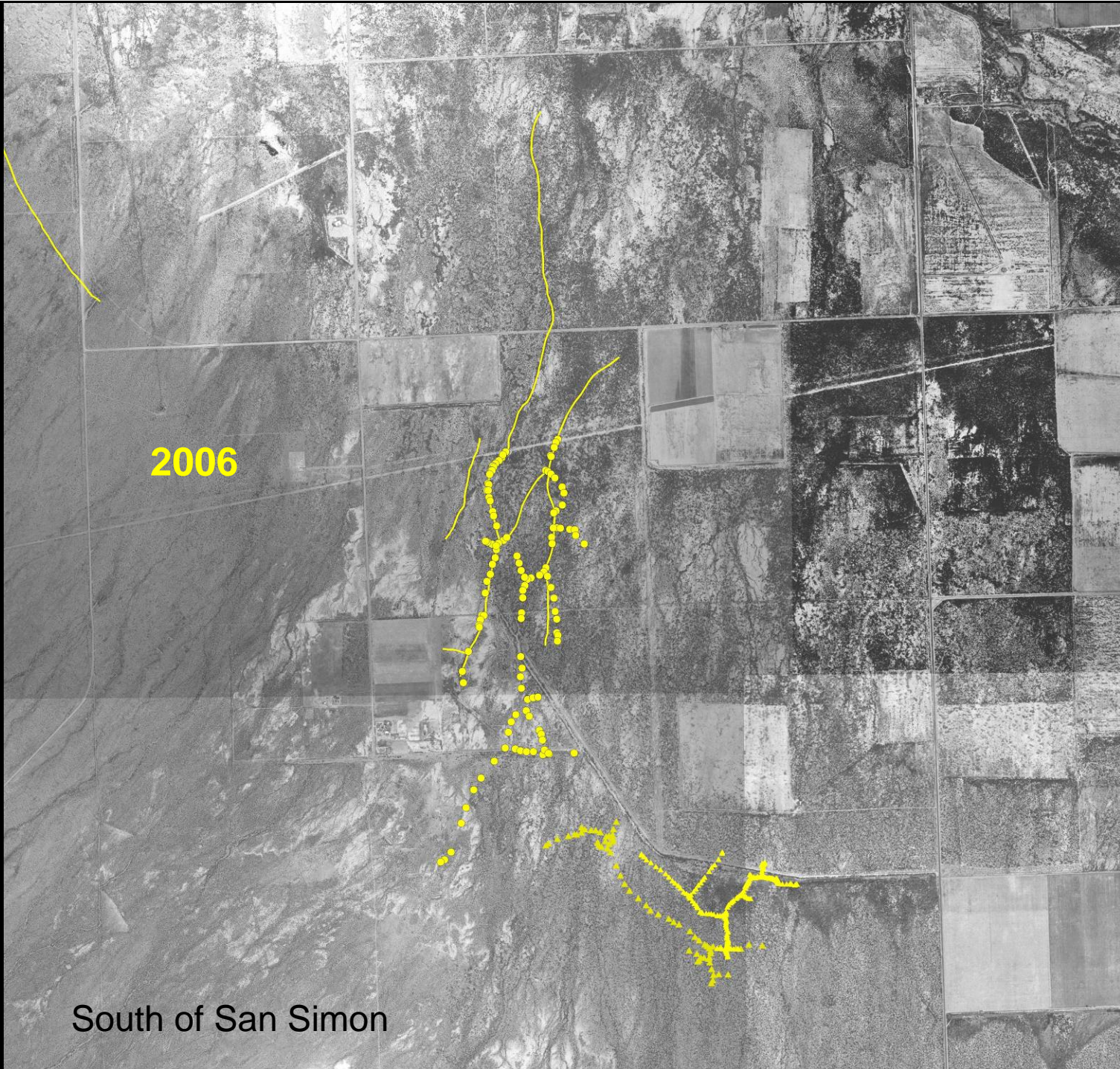
2004

South of San Simon



2005

South of San Simon



2006

South of San Simon



**SIGNS OF THE TIMES
IN COCHISE COUNTY**