

# *ARIZONA RANCHES*

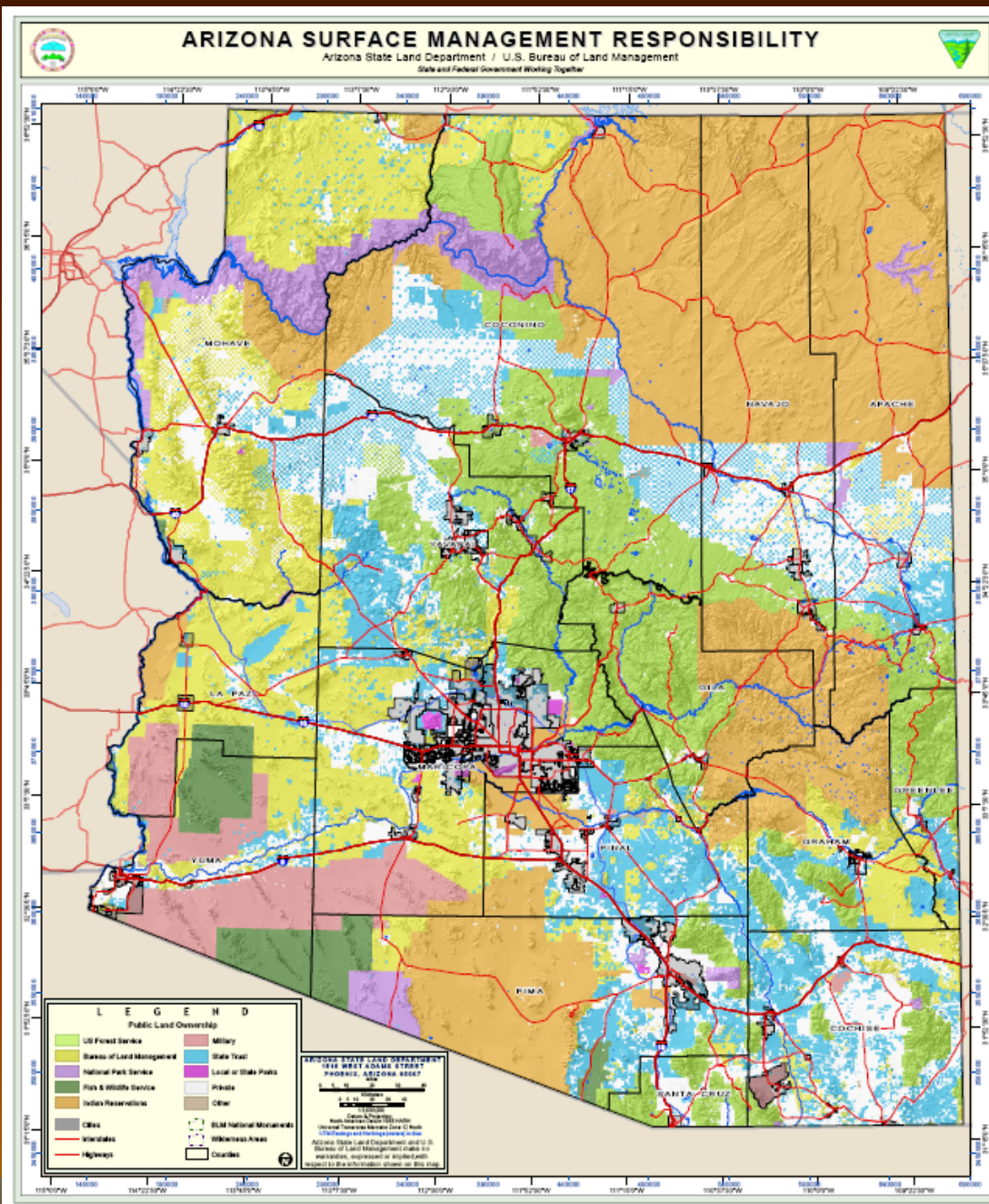


**Tom A. Rolston, ARA**

**Carter S. Benton**

**Tim T. Roberts**

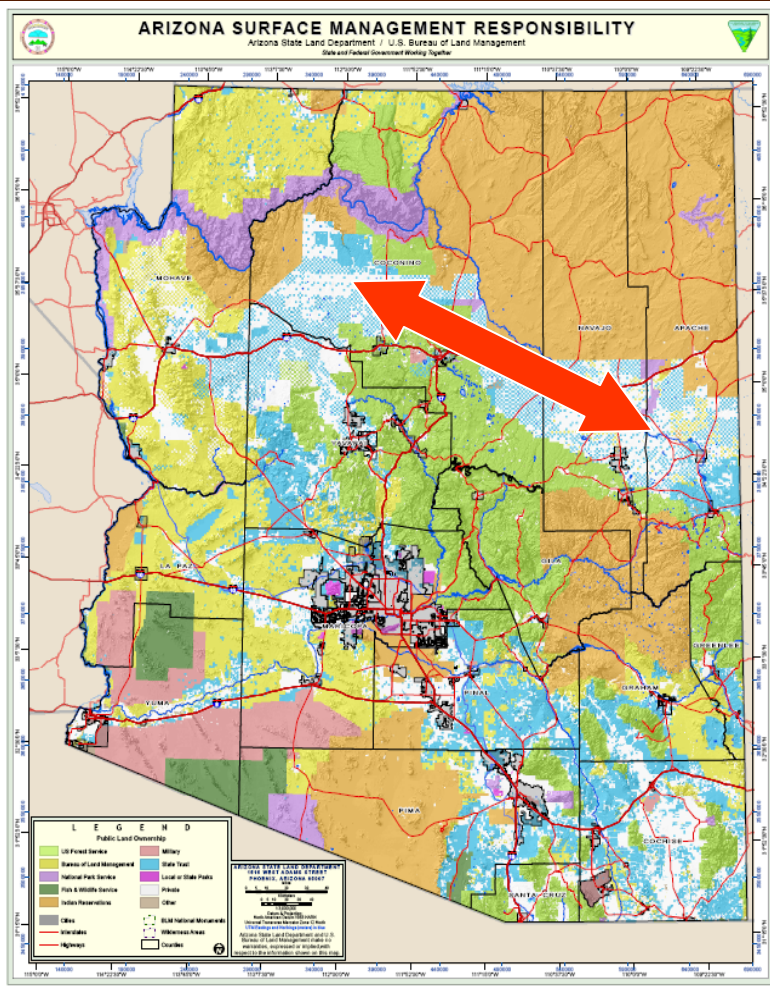
***Ganado Group, Inc.***



## Ranch Categories

- Checkerboard & Surface Grazing Ranches of Northern Arizona
- Seasonal Forest Service Grazing Permits
- Yearlong Forest Service Grazing Permits
- BLM Allotments
- Southeastern Arizona Ranches
- Arizona Grazing Leases & Allotments

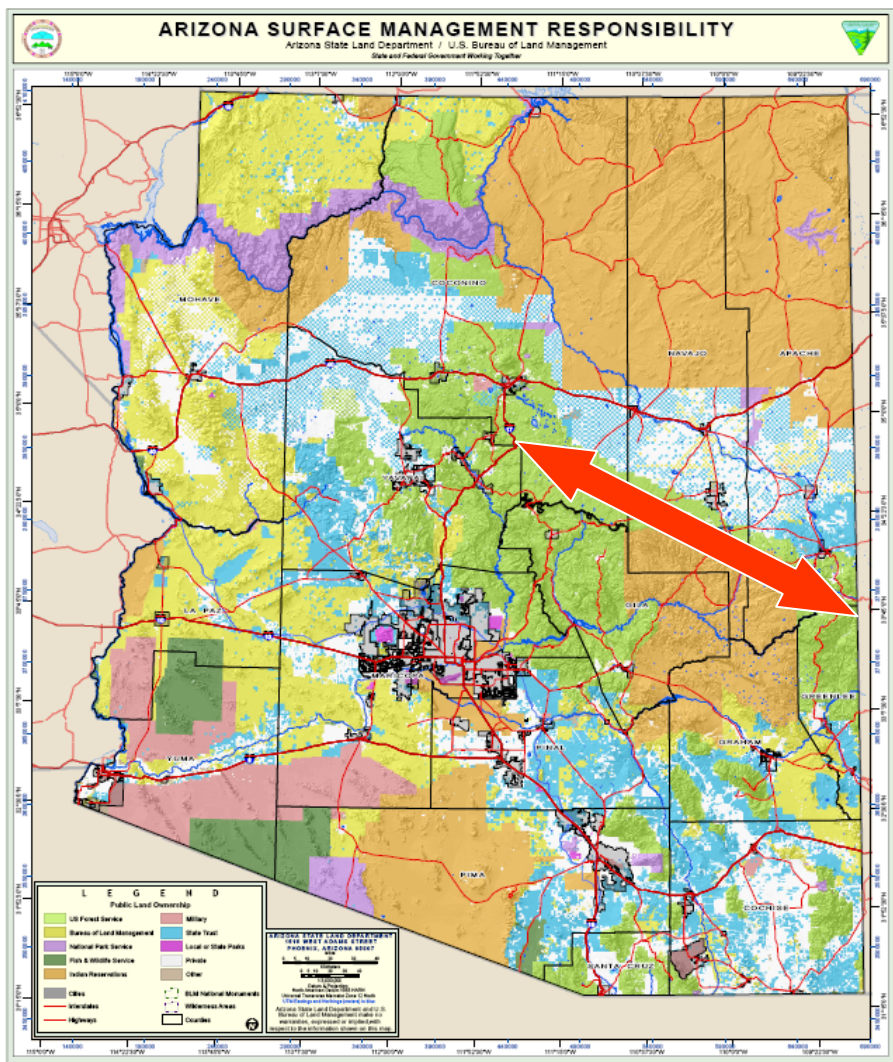
# Checkerboard Ranches



	Value Per Unit	Activity / Trend
Investment / Ranch / With 5,000 Acres Min.	\$100 - \$1,030 / AC	Slow / Slow
Ranches w/40-ac subdivision & surface grazing	\$470 - \$2,210 / AU	Steady / Steady

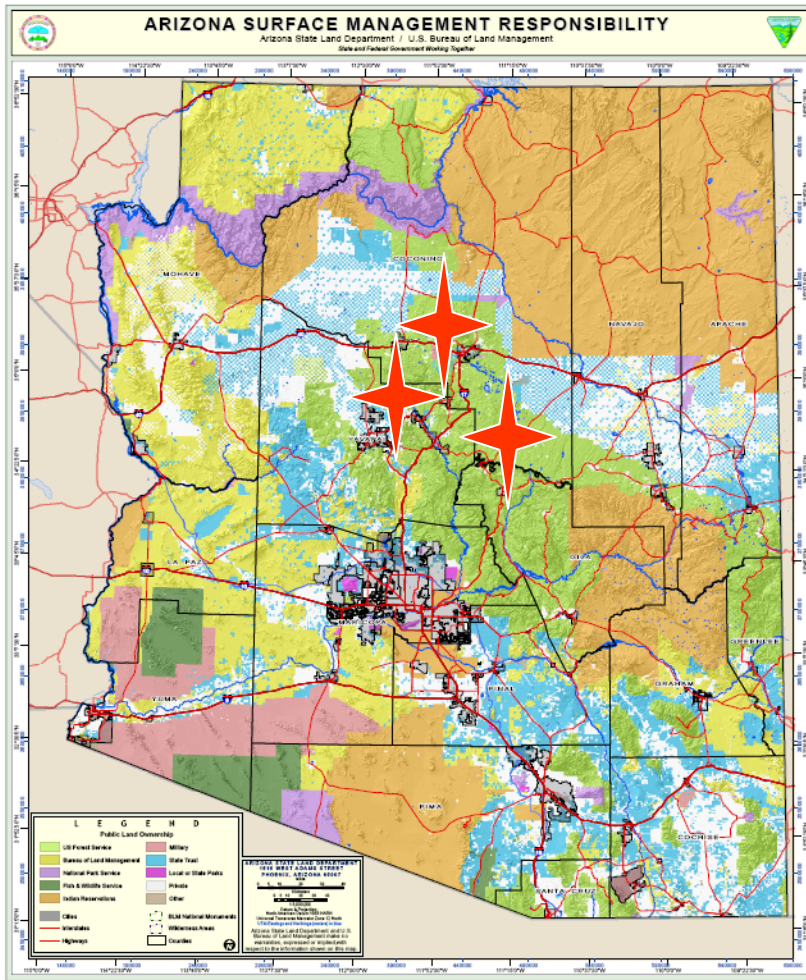
2/26/2010

# Seasonal Grazing Permits



	Value Per Unit	Activity / Trend
Seasonal Grazing Permits	5-Yr. Mkt. \$470 – \$2,820 / AU	Slow / Steady
100% Seasonal Permits W/O Deeded Base Property	5-Yr. Mkt. \$500 – \$980 / AU	Slow / Steady

# Yearlong Forest Grazing Permits



Coconino,  
 Kaibab, &  
 Prescott  
 NF W/  
 Base Prop.

100%  
 Forest  
 Permit

Value Per  
 Unit

\$2,500 -  
 \$4,900 /  
 AU

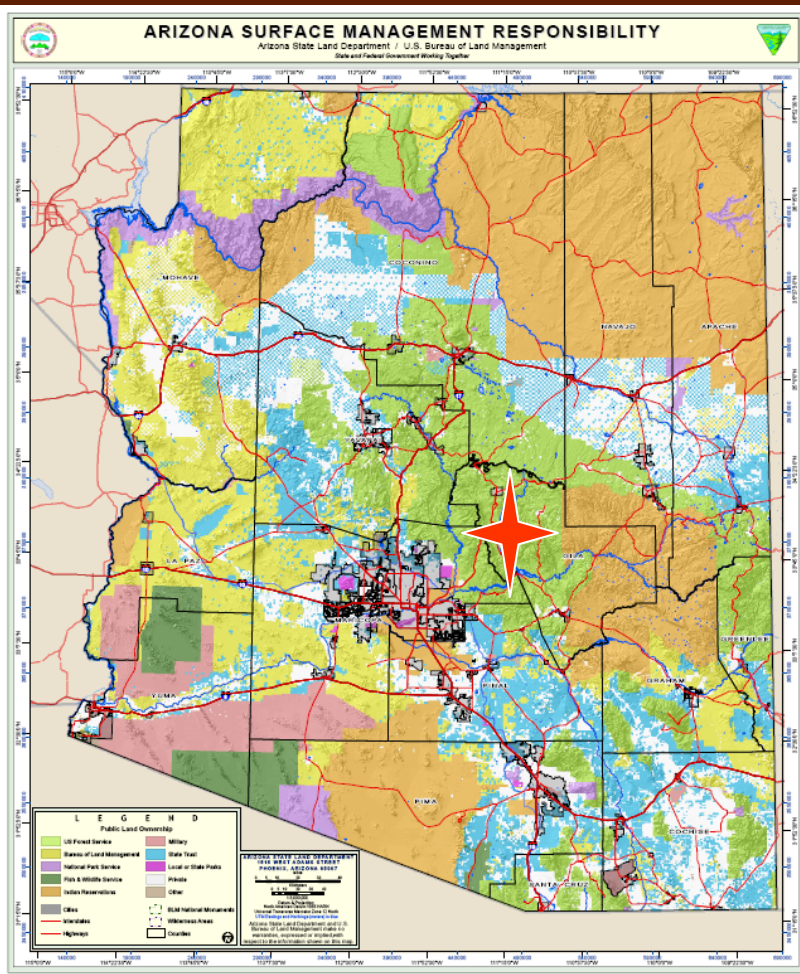
\$1,000 /  
 AU

Activity /  
 Trend

Slow /  
 Slow

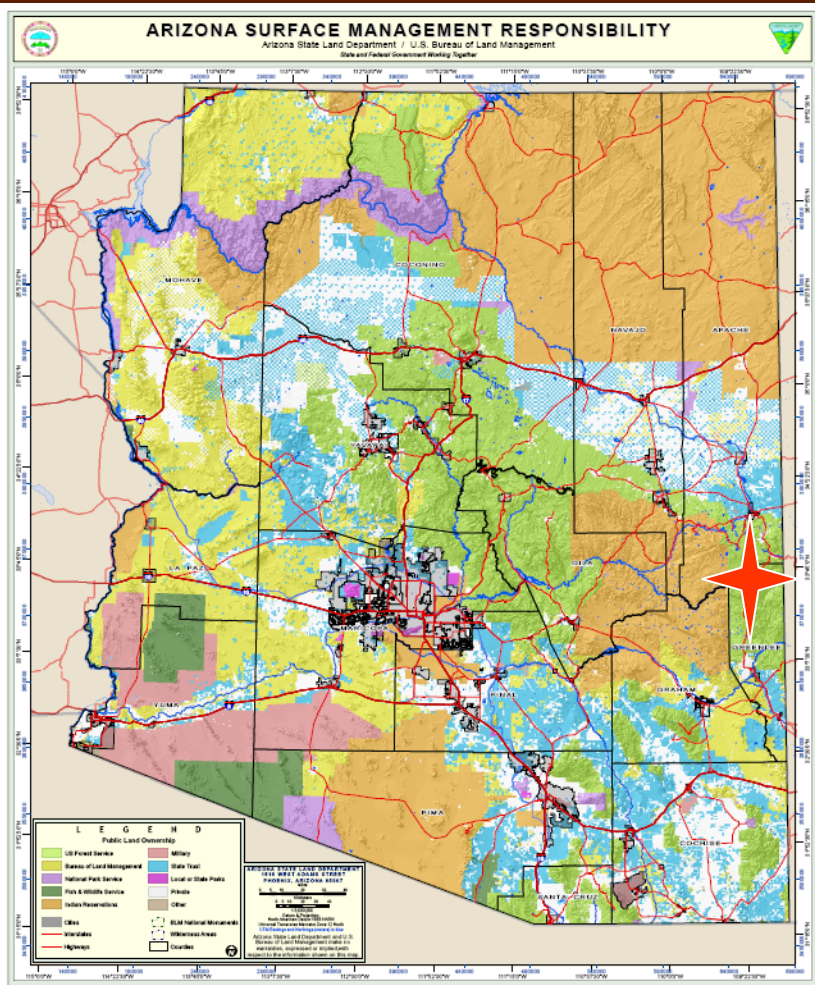
Slow /  
 Slow

# Yearlong Forest Grazing Permits



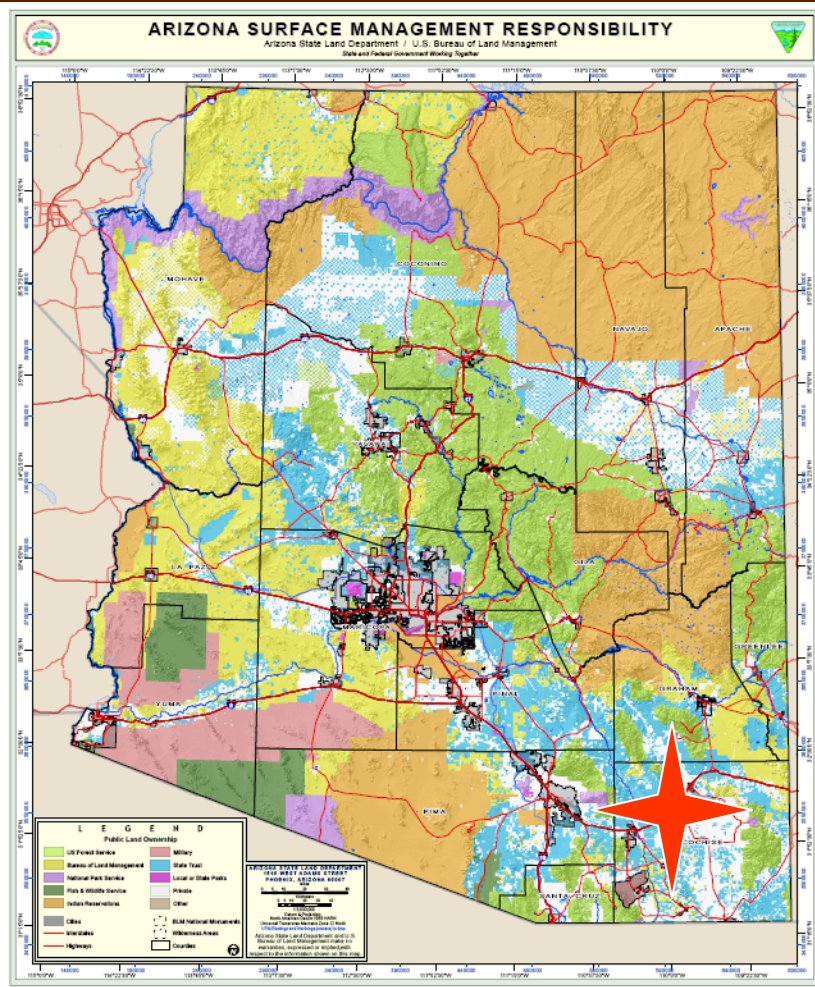
	Value Per Unit	Activity / Trend
Tonto NF W/ Base Prop.	\$540 – \$6,850 / AU	Steady / Steady
100% Forest Permit	\$125 – \$470 / AU	Slow / Decline

# Yearlong Forest Grazing Permits



	Value Per Unit	Activity / Trend
Apache-Sitg. NF W / Base Prop.	\$700 - \$1,425 / AU	Slow / Unknown
100% Forest Grazing Permit	N / A	Unknown

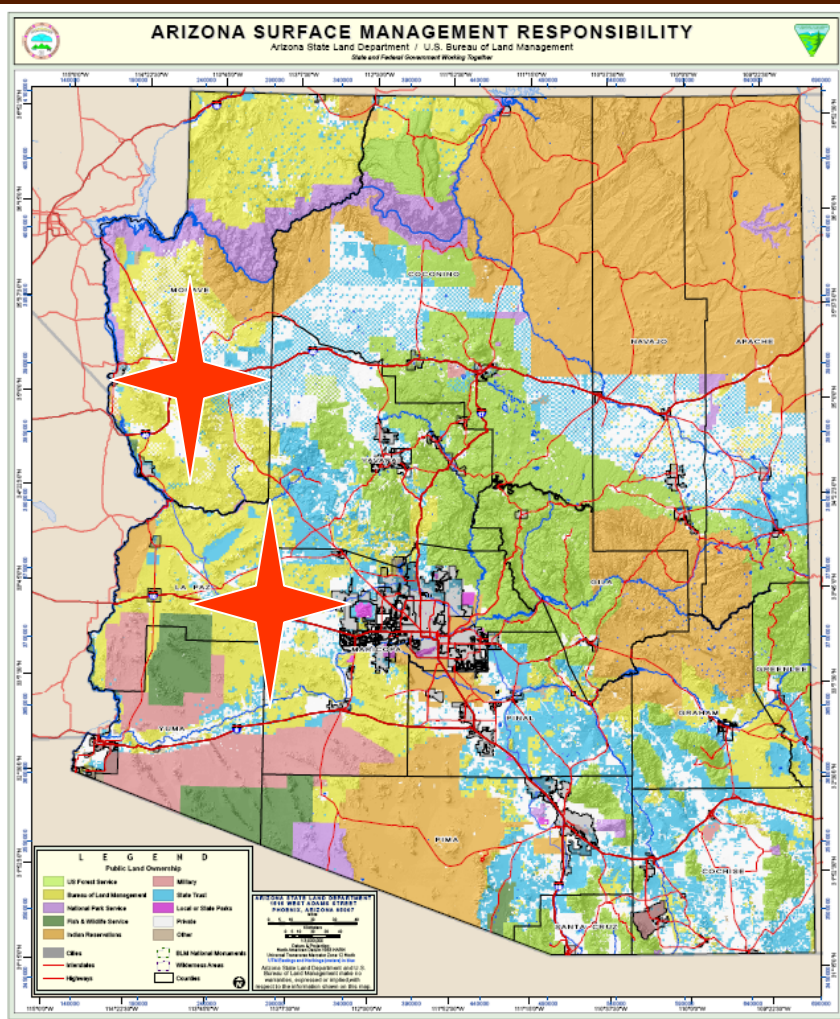
# Yearlong Forest Grazing Permits



	Value Per Unit	Activity / Trend
Coronado NF W / Base Prop.	\$850 – \$12,350 / AU	Slow / Steady
100% Coronado NF	\$850 – \$1,800 / AU	Slow / Slow



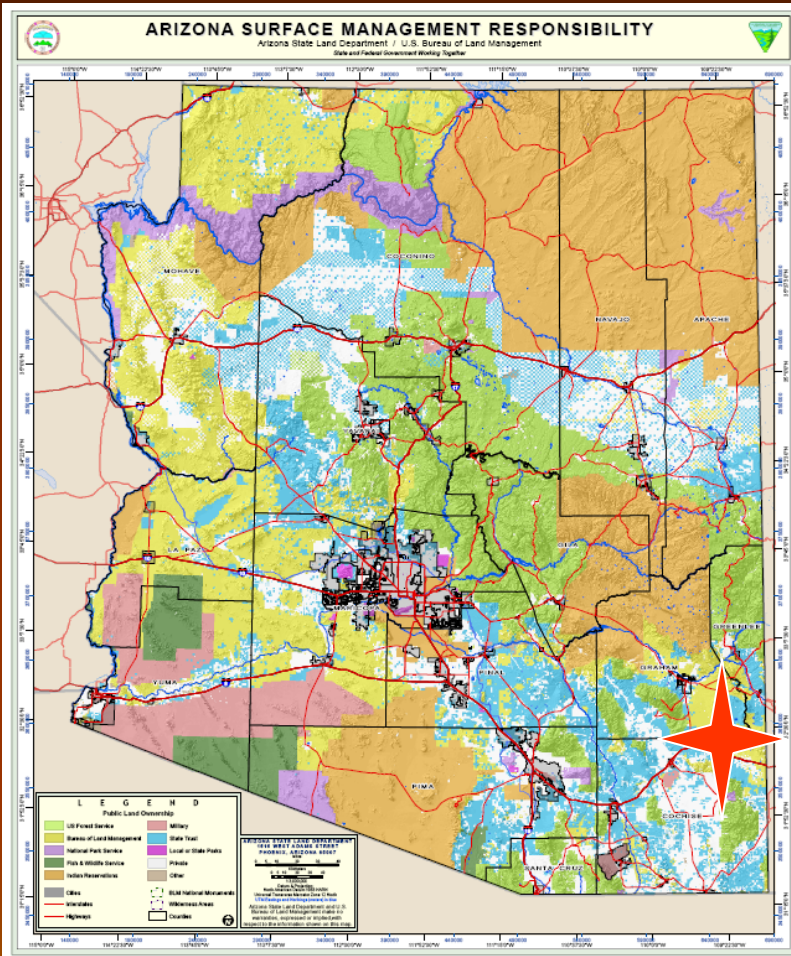
# Western BLM Grazing Allotments



	Value Per Unit	Activity / Trend
Western BLM W / Deeded	\$500 - \$6,000 / AU	Slow / Slow
100% Western BLM	\$530 - \$1,930 / AU	Slow / Slow

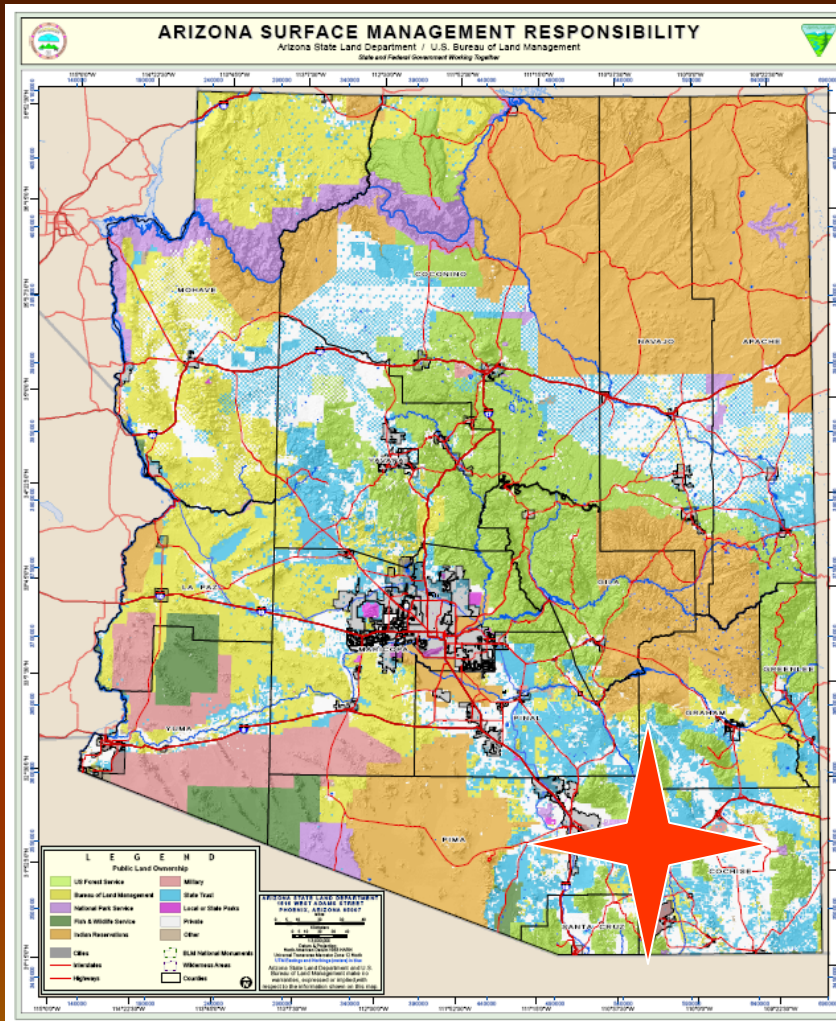


# Safford BLM Grazing Allotments



	Value Per Unit	Activity / Trend
Safford BLM W / Deeded	\$1,080 - \$5,310 / AU	Slow / Steady
100% Safford BLM Allot.	\$1,000 / AU	Slow / Unknown

# Southeastern Arizona Ranches



	Value Per Unit	Activity / Trend
Investment, State & Forest Ranches	\$3,740 - \$9,250 / AU	Slow / Unknown
Investment & State Ranches	\$400 - \$5,700 / AC	Slow / Unknown
Open Space	\$1,900 - \$5,000 / AC	Pima County Active
Rangeland / Development	\$935 - \$4,750 / AC	Slow / Unknown



# Arizona Grazing Leases / Allotments

	Value Per Unit	Activity / Trend
100% State Lease	\$1,000 - \$1,500 / AU	Steady / Steady
100% BLM Allotment	\$1,000 - \$1,930 / AU	Slow / Slow
100% Forest Allotment	\$157 - \$1,400 / AU	Slow / Steady
100% Seasonal Forest	\$500 - \$980 / AU	Slow / Steady

