

AG Outlook Forum The Economy: Back to the Future

Eric Anderson, Transportation Director
Maricopa Association of Governments
February 26, 2010



Arizona Chapter of the
American Society of Farm Managers and Rural Appraisers
Providing management, valuation and consulting services
on agricultural and rural assets since 1929

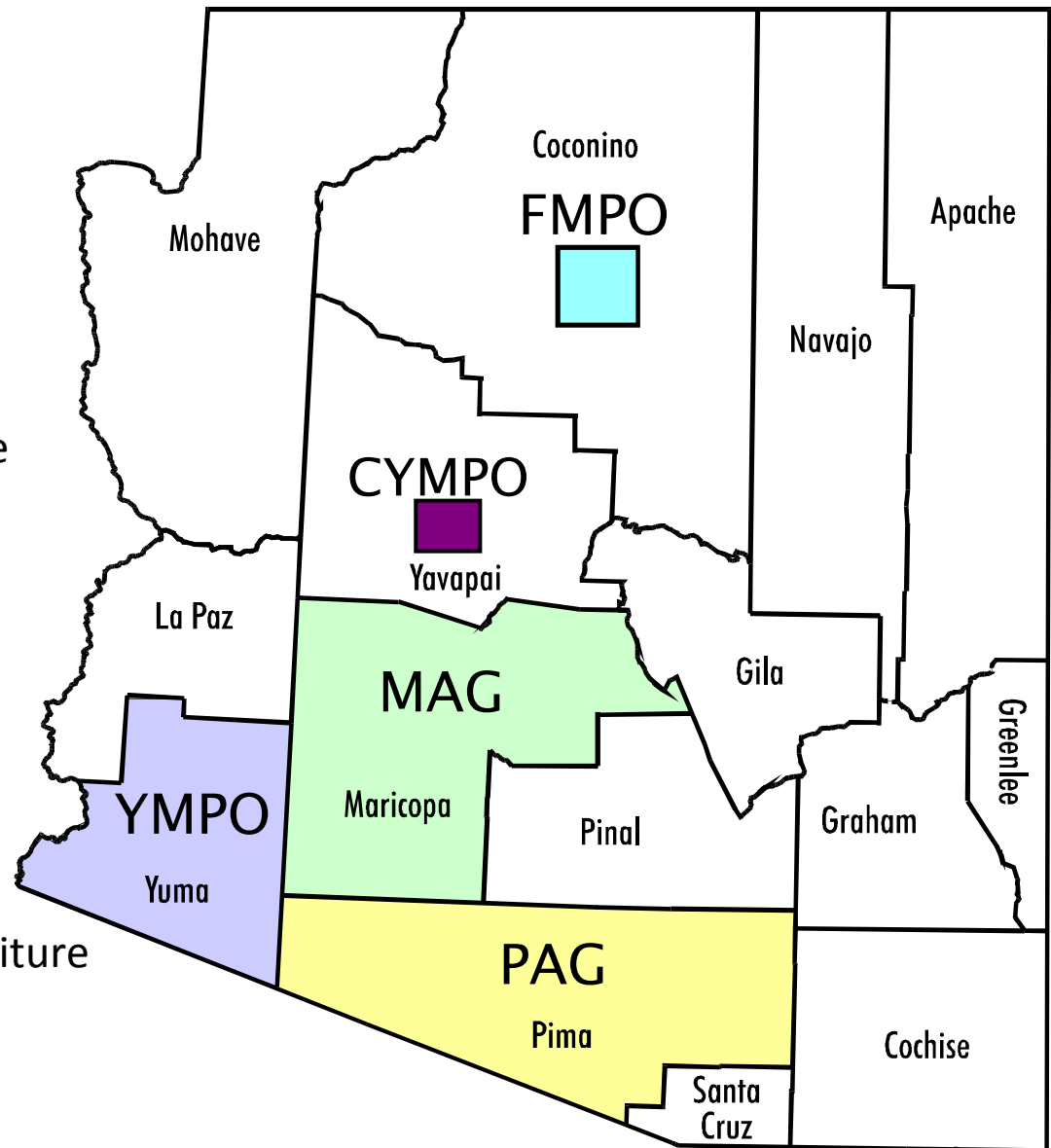
Metropolitan Planning Organizations (MPOs)

Urbanized areas of more than 50,000 residents.

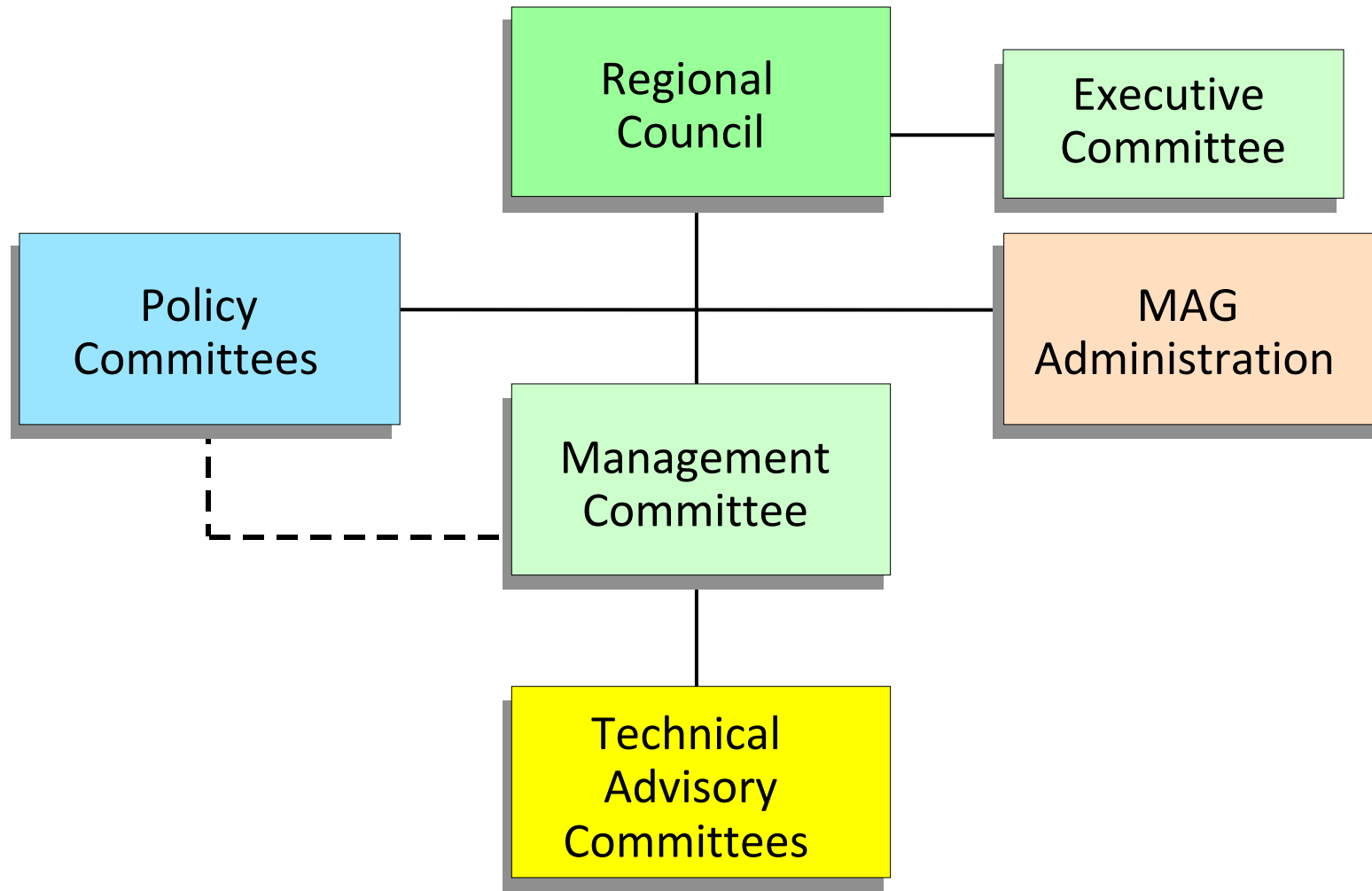
Boundary includes at a minimum, the urbanized area and the contiguous geographic area(s) likely to become urbanized within 20-years.

A forum for cooperative transportation decision-making for the metropolitan planning area.

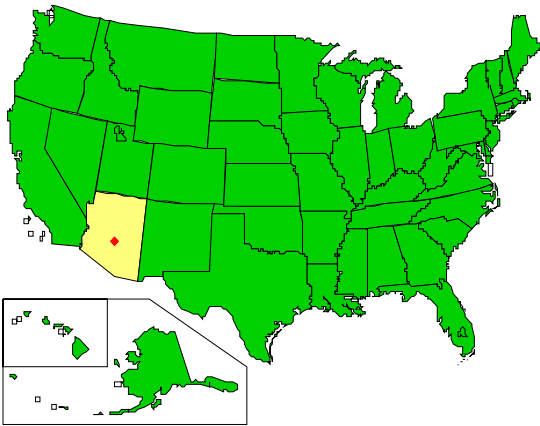
Purpose is to ensure that the expenditure of federal transportation funds is based on a continuing, cooperative & comprehensive 3-C transportation process.



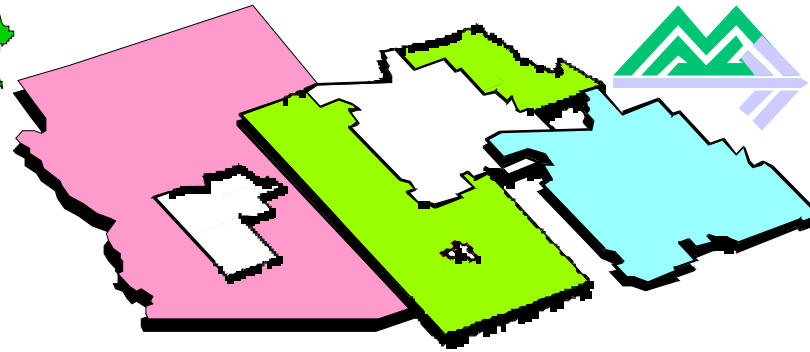
MAG Policy Structure



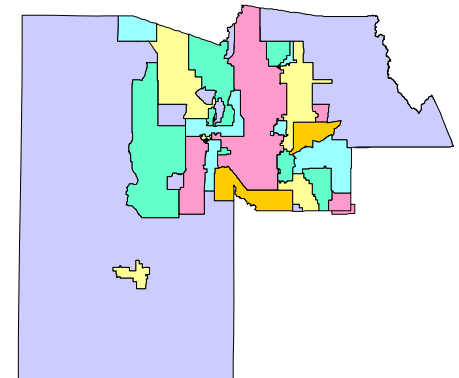
Roles & Responsibilities



Federal

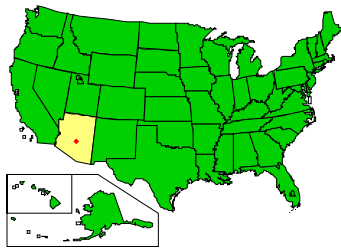


State

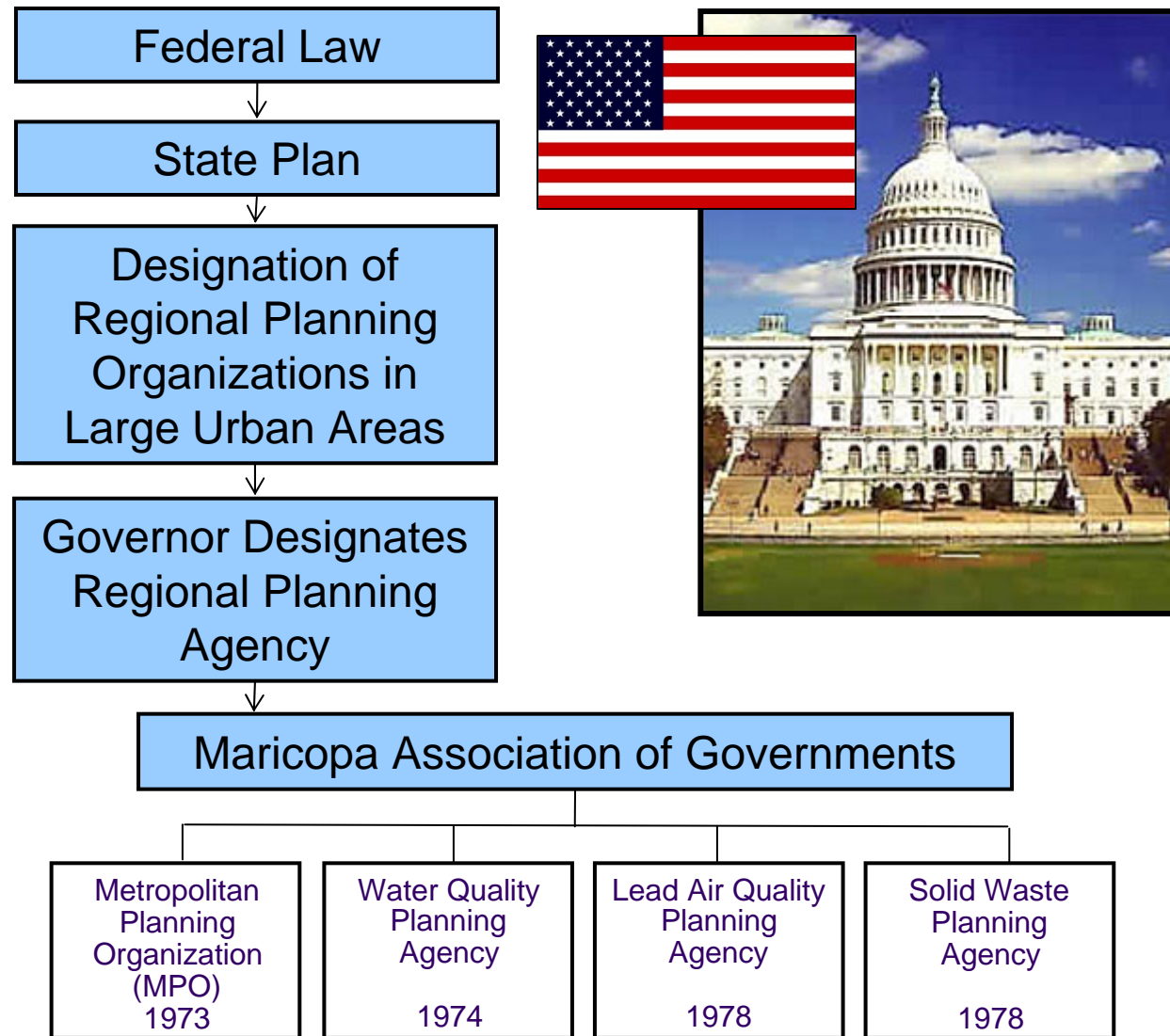


Regional

Federal Responsibilities



Federal



Draft 2009 Update to the

RTP

Regional Transportation Plan

June 2009



Draft FY 2010-2014

TIP

Transportation Improvement Program

June 2009



FY 2010 Conformity Analysis

AOC

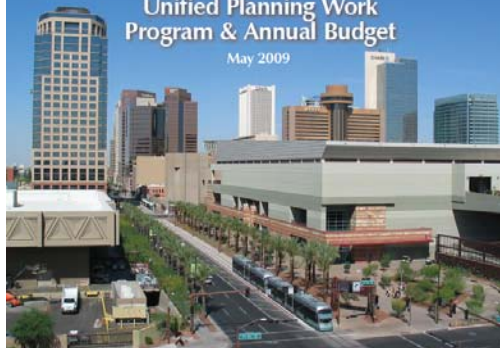
Air Quality Conformity

for the FY 2010-2014 Transportation Improvement Program and the Regional Transportation Plan - 2009 Update

June 2009



FY 2010
Unified Planning Work
Program & Annual Budget
May 2009



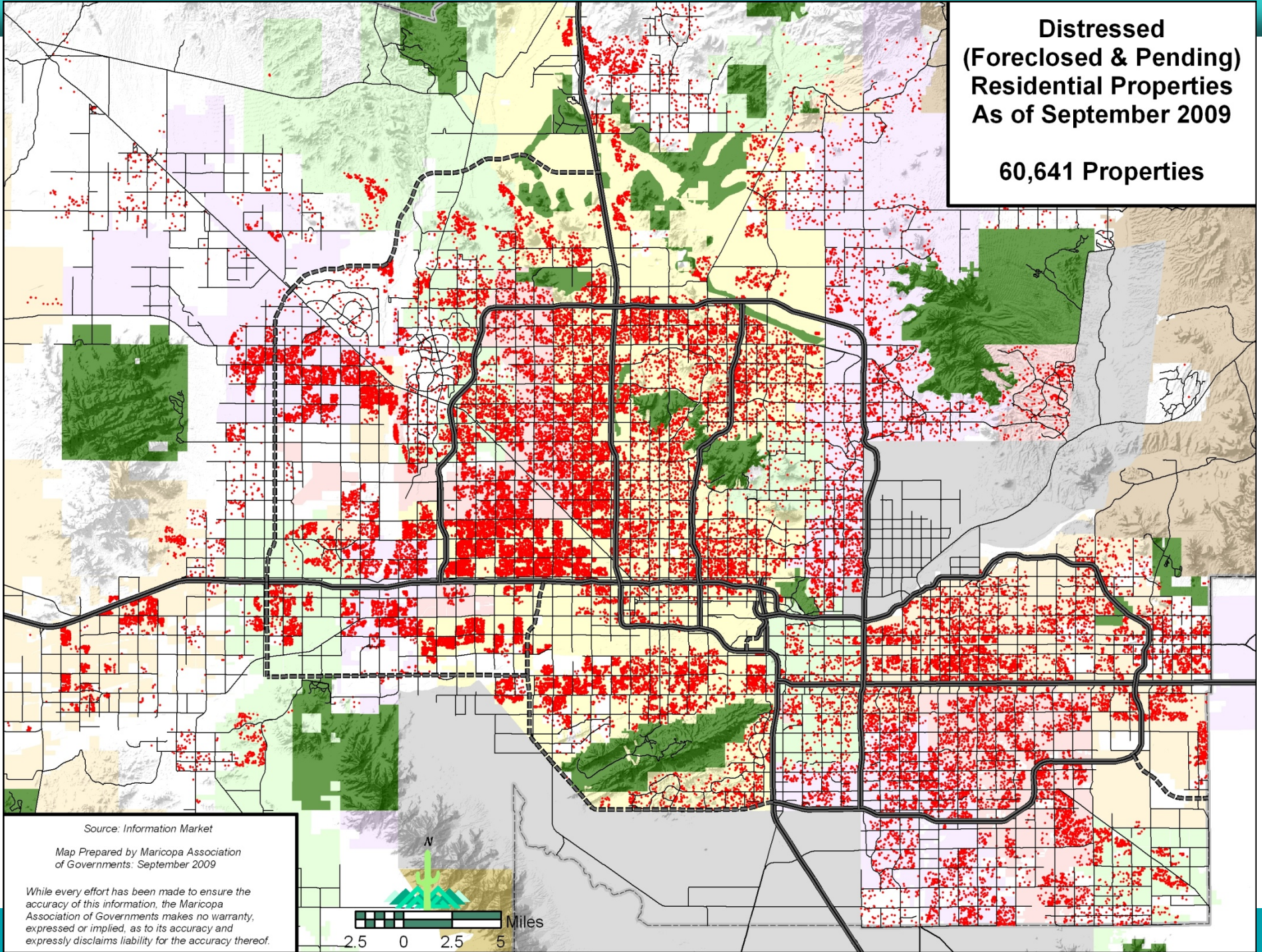
302 North 1st Avenue, Suite 300, Phoenix, Arizona 85003

Where is the Economy Headed?



**Distressed
(Foreclosed & Pending)
Residential Properties
As of September 2009**

60,641 Properties

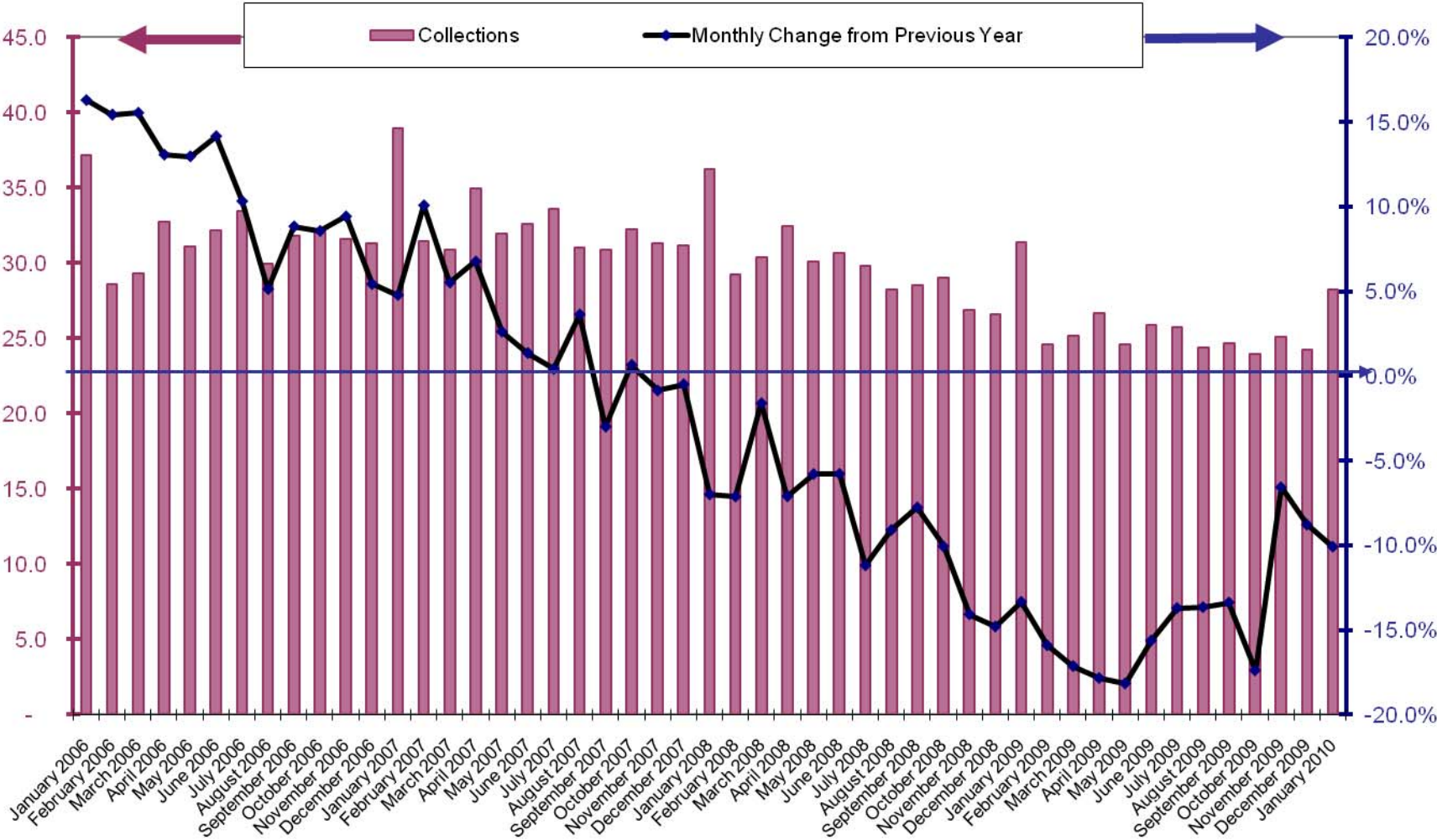


Source: Information Market

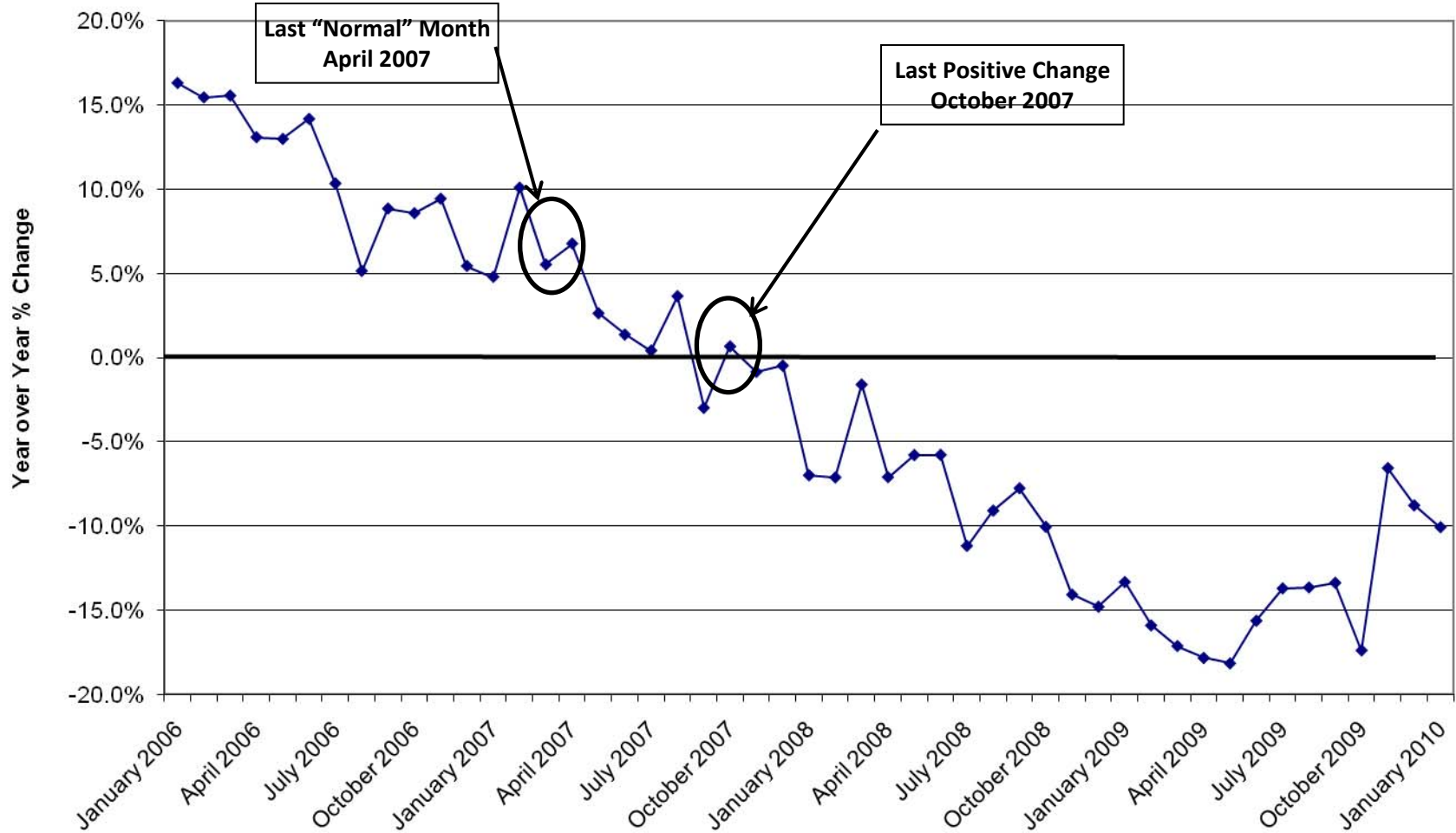
Map Prepared by Maricopa Association
of Governments: September 2009

While every effort has been made to ensure the accuracy of this information, the Maricopa Association of Governments makes no warranty, expressed or implied, as to its accuracy and expressly disclaims liability for the accuracy thereof.

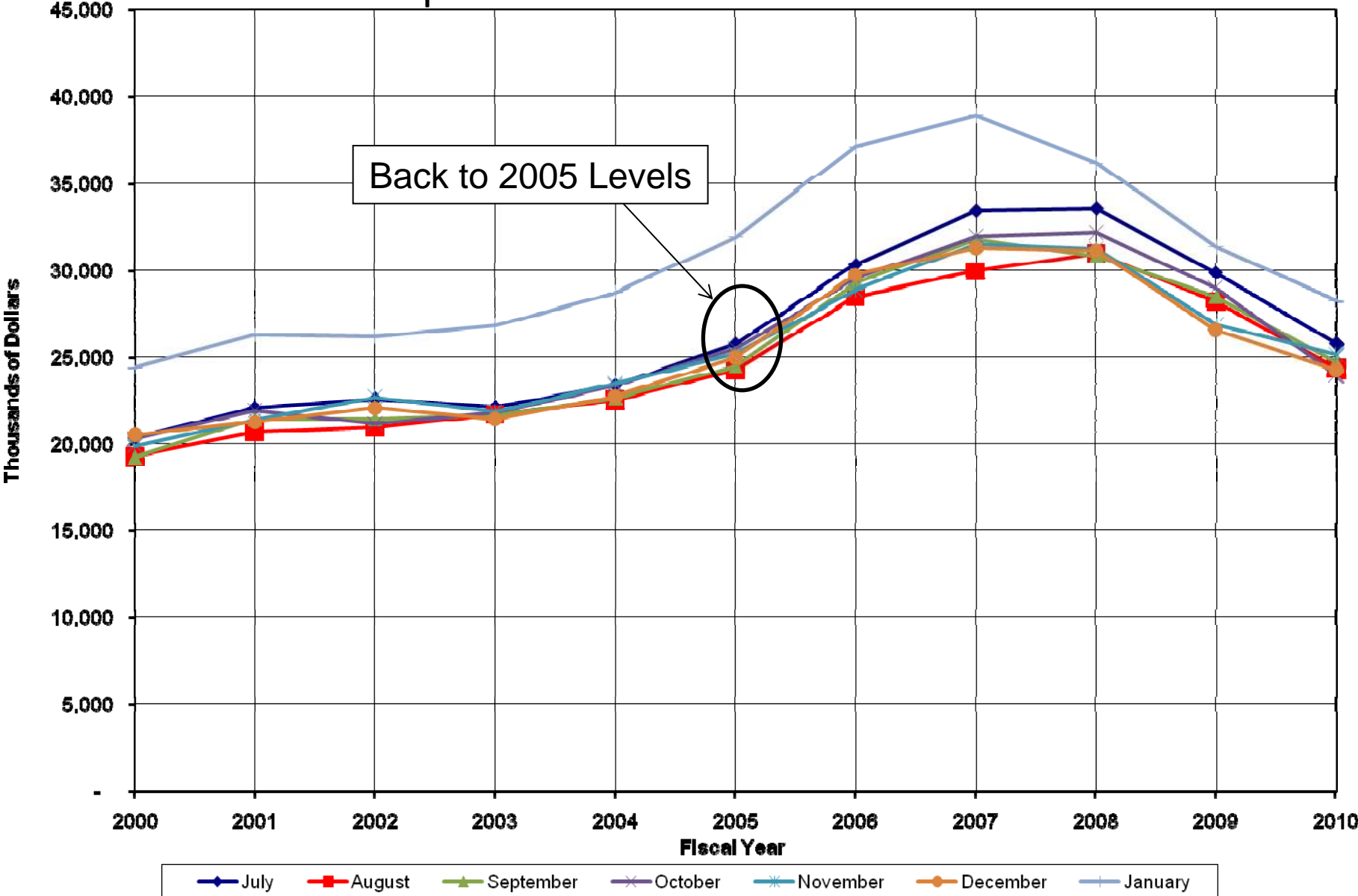
Proposition 400 Sales Tax Revenues



Proposition 400 Sales Tax Growth



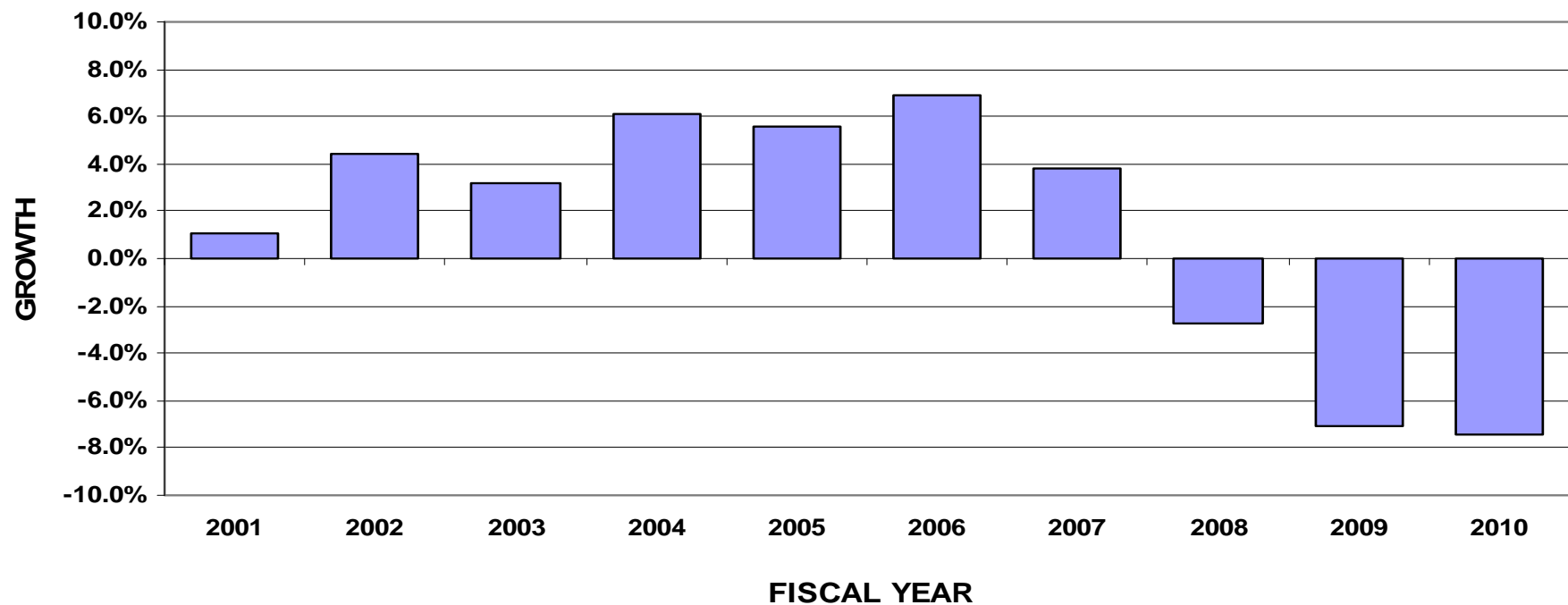
Proposition 400 Sales Tax Revenues



Highway User Revenue Fund

Percentage Change by Fiscal Year

FY 2001 – 2010



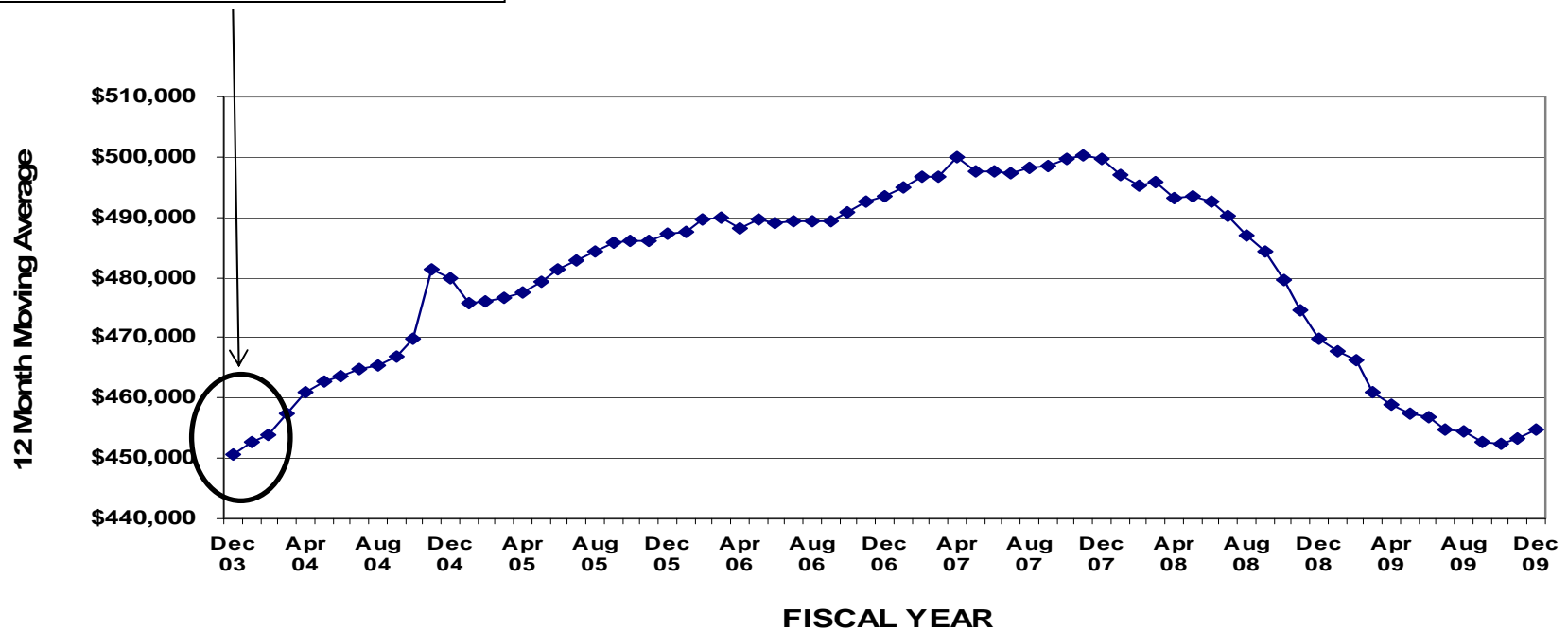
NOTE: FY 2010 through December 2009.

Transportation Revenue Growth

12-Month Moving Average (\$000s)

Gas Tax

Back to March 2004 Levels



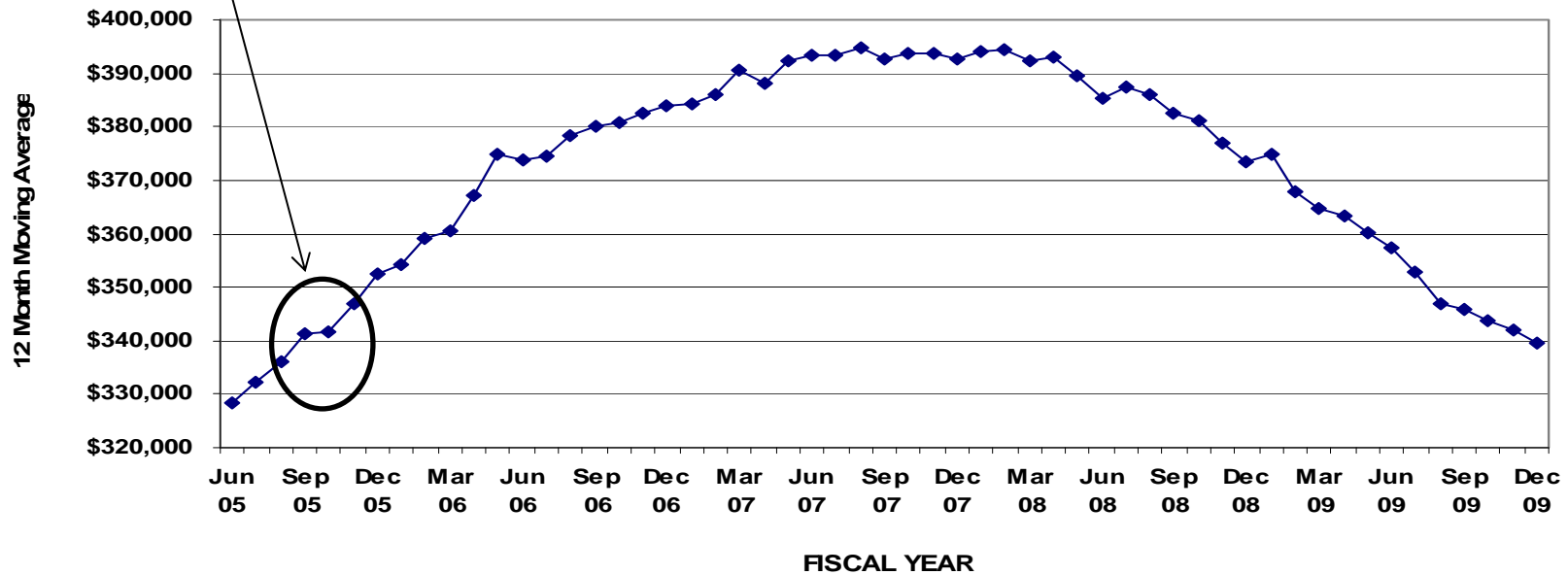
NOTE: FY 2010 through December 2009.

Transportation Revenue Growth

12-Month Moving Average (\$000s)

Vehicle License Tax

Back to Sept 2005 Levels



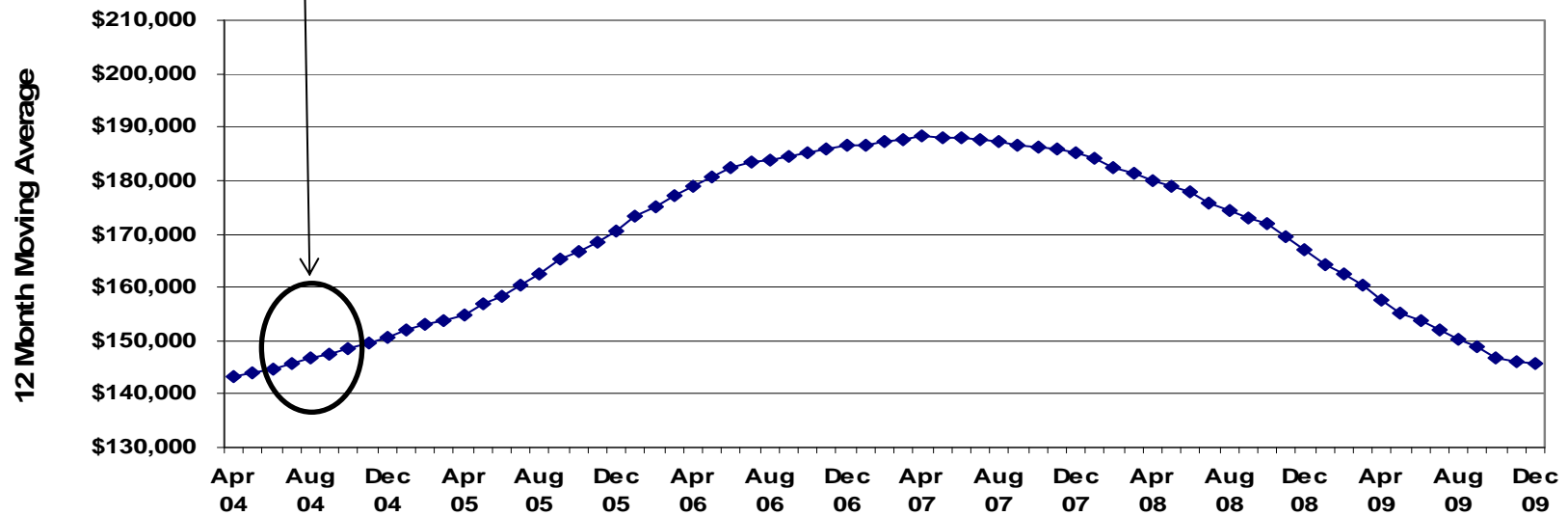
NOTE: FY 2010 through December 2009.

Transportation Revenue Growth

12-Month Moving Average (\$'000s)

Retail Sales

Back to Sept 2004 Levels



NOTE: FY 2010 through December 2009.

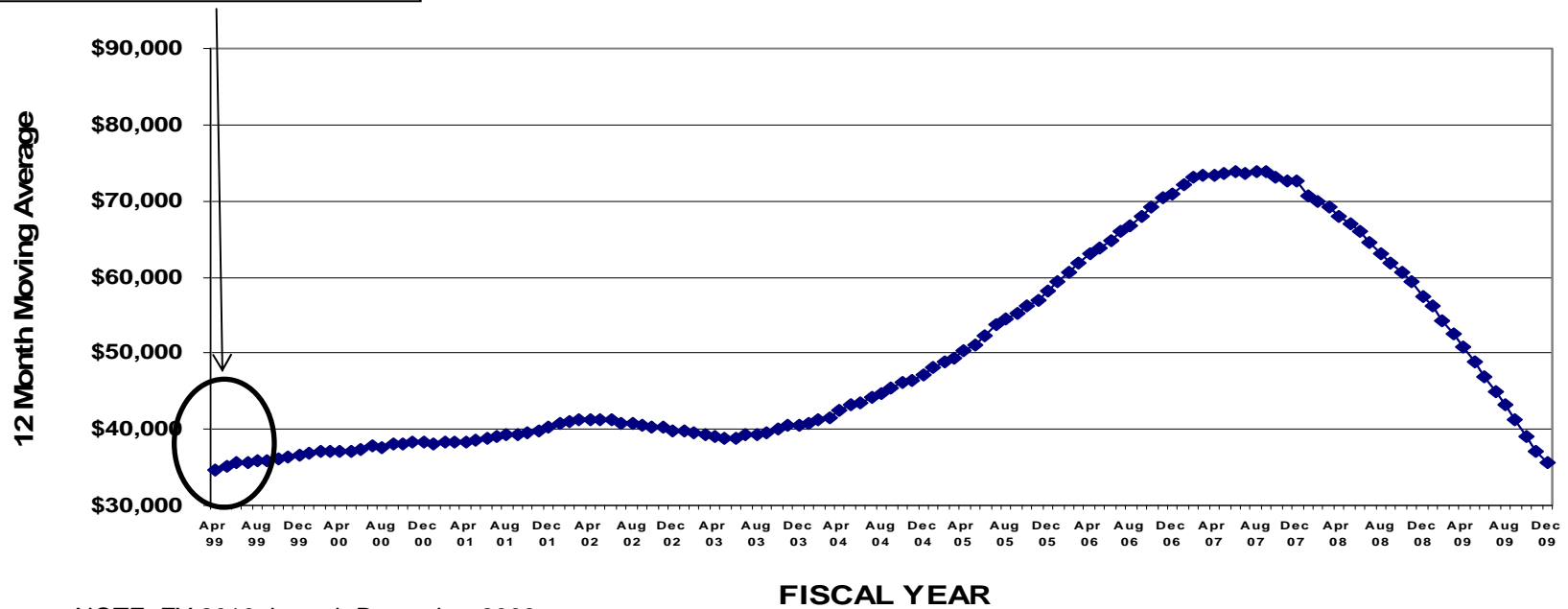
FISCAL YEAR

Transportation Revenue Growth

12-Month Moving Average (\$000s)

Contracting

Back to 1999 Levels



NOTE: FY 2010 through December 2009.

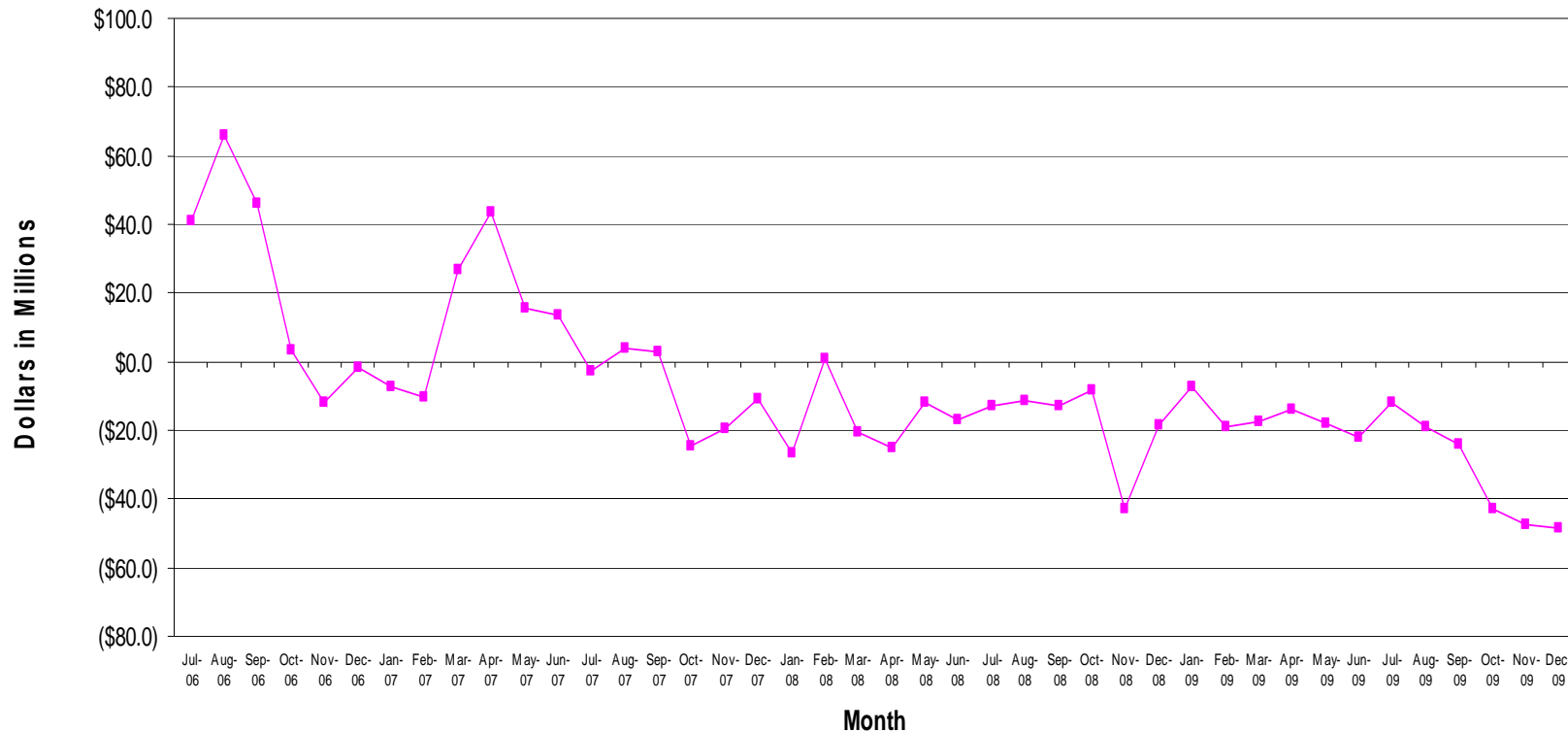
Transfers to DPS from HURF and State Highway Fund
 FY 2002 - 2010
 (Dollars in Millions)

Fiscal Year	HURF	SHF	Total	ADOT Impact	Per Statute	Additional Transfers
2002	\$52	\$25	\$77	\$52	\$15	(\$37)
2003	\$55	\$38	\$93	\$66	\$15	(\$51)
2004	\$49	\$30	\$79	\$55	\$15	(\$40)
2005	\$52	\$33	\$85	\$58	\$15	(\$43)
2006	\$64	\$42	\$106	\$74	\$15	(\$59)
2007	\$10	\$10	\$20	\$15	\$15	\$0
2008	\$10	\$52	\$62	\$57	\$15	(\$42)
2009	\$85	\$41	\$126	\$84	\$15	(\$69)
2010 (Est.)	\$79	\$41	\$120	\$81	\$15	(\$66)
Total	\$456	\$312	\$768	\$542	\$135	(\$407)

Note: Does not include VLT transfers to state general fund and DPS.

State Highway Fund Low Cash Balance

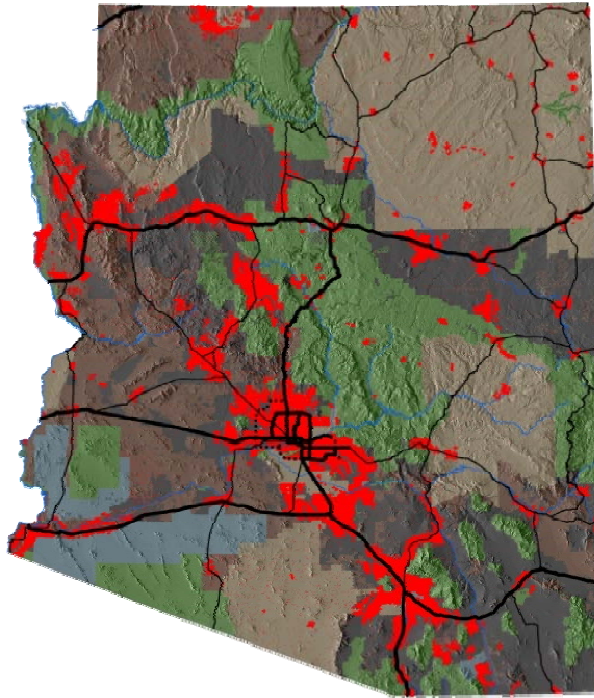
FY 2007 – FY 2010



—■ Low SHF Balance

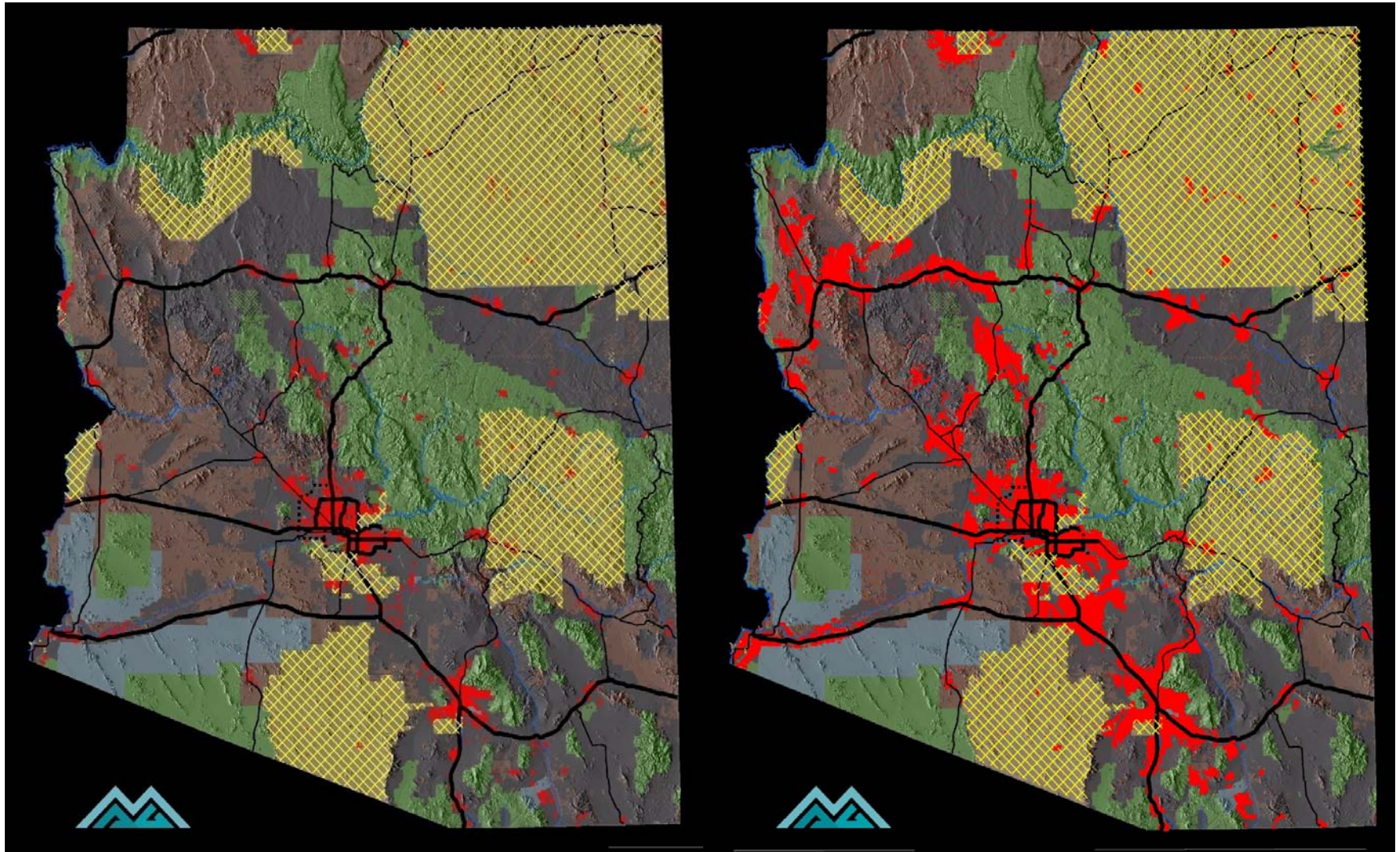
NOTE: Excludes BFOs.

Statewide & Regional Growth



Arizona's Future

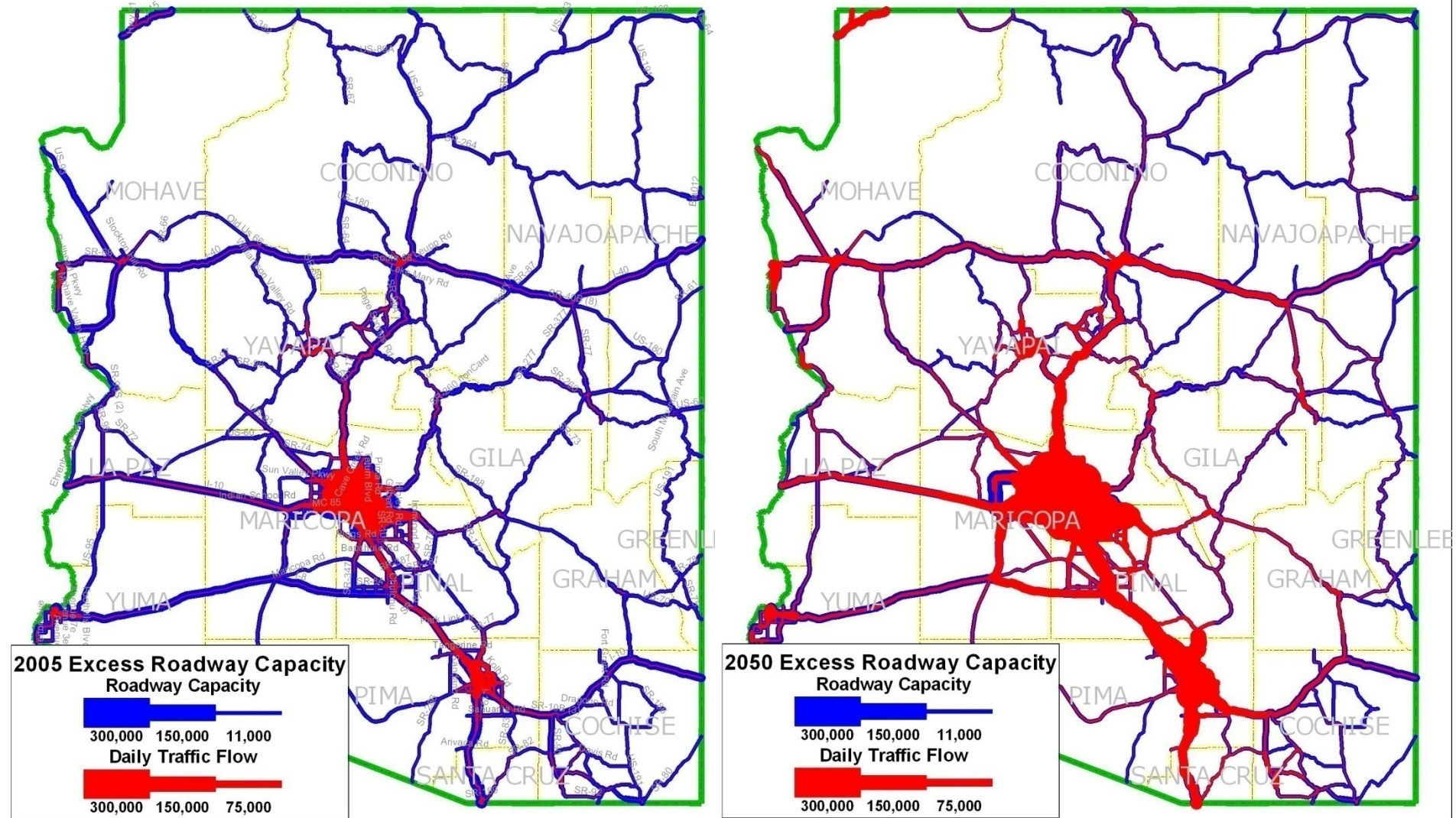
POTENTIAL STATEWIDE GROWTH

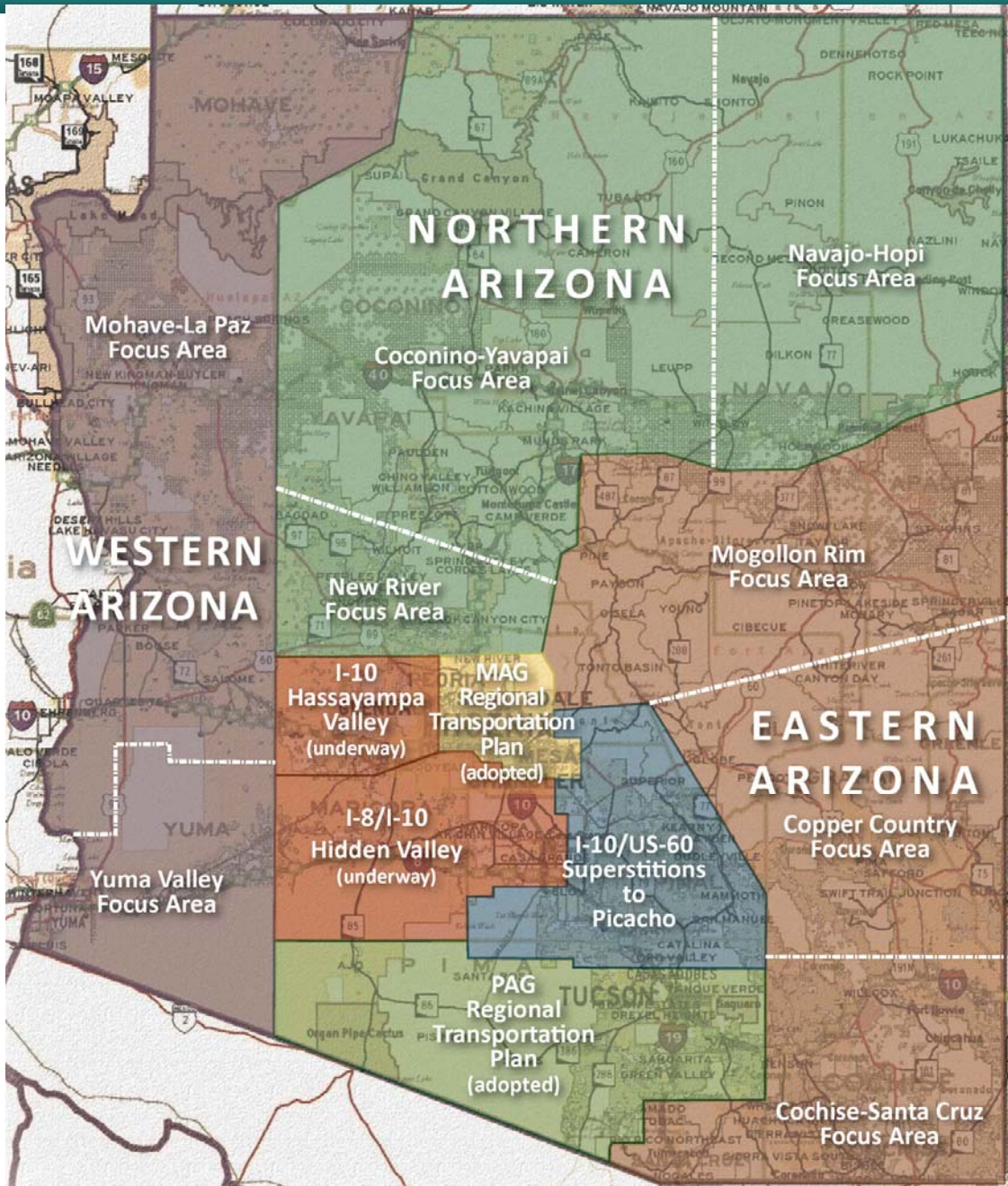


2000 - 6 million

2050 - 16 million

Visual Volume-to-Capacity Ratio





Framework Locations

PLANNING THE
TRANSPORTATION FUTURE
FOR ARIZONA

As agreed to by the Arizona COG/MPO
Association and the Arizona Department of
Transportation
October 4, 2007

Transportation Framework INTERSTATE 10- HASSAYAMPA VALLEY

Freeways

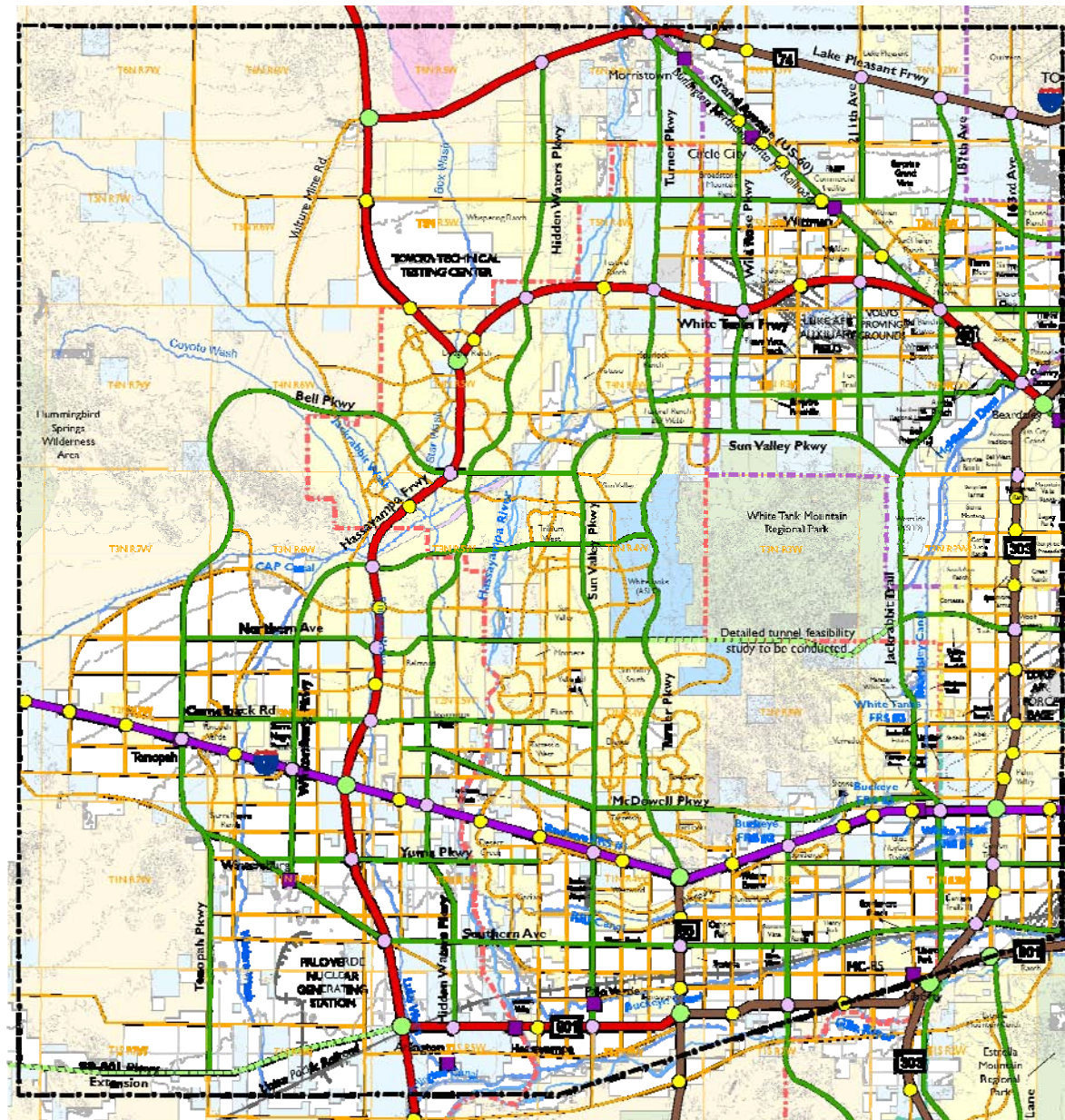
- Existing Freeway Improvements
- Future RTP Freeways
- New Freeway Proposals

Parkways

- New Parkway Alternatives
- - - - - New Parkway Proposals

Major Arterials

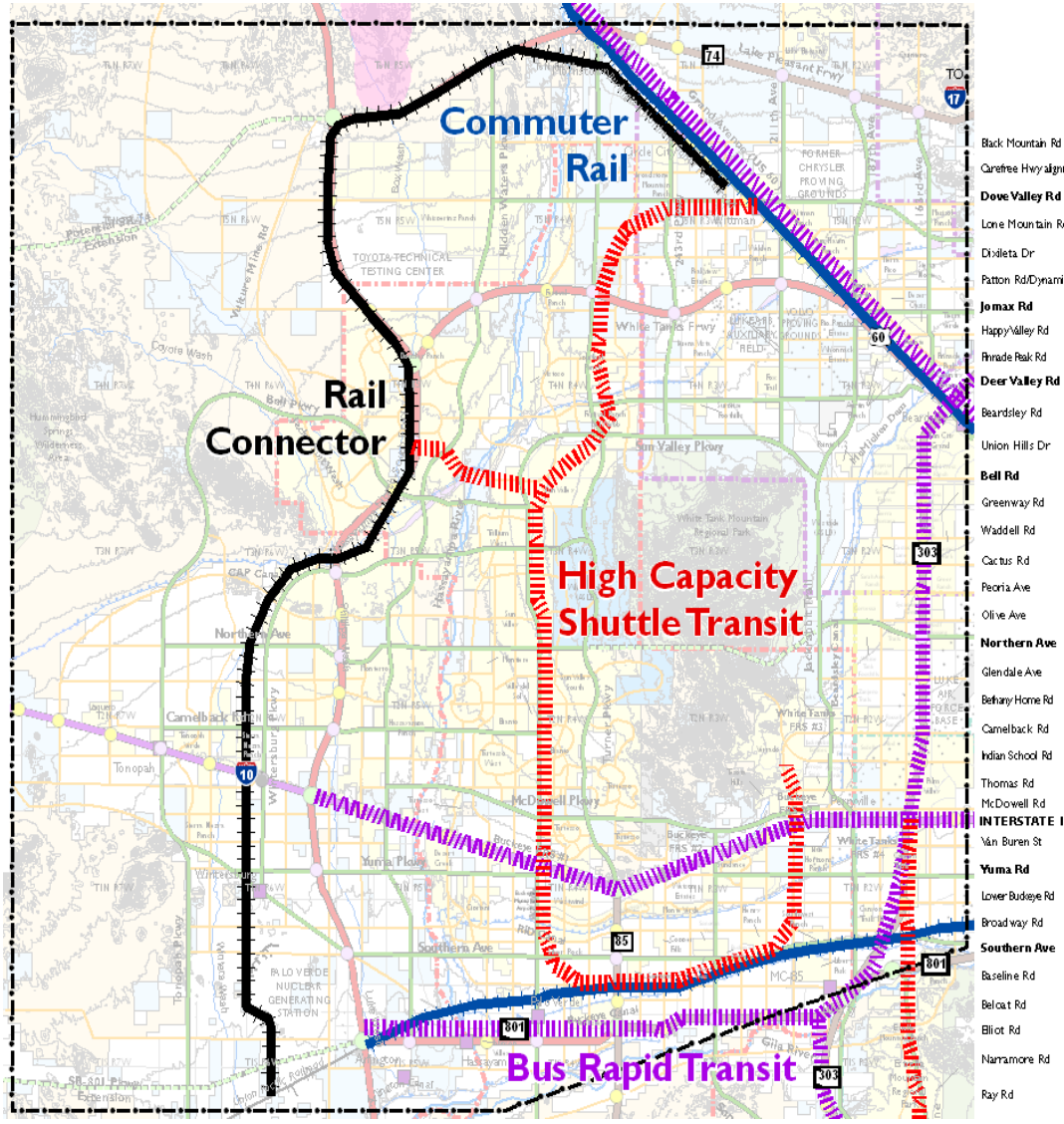
- Future Major Arterial Network





- Black Mountain Rd
- Carson Hwy alignment
- Dove Valley Rd
- Loze Mountain Rd
- Dialata Dr
- Paxon Rd/Dynamite Rd
- Jarvis Rd
- Happy Valley Rd
- Pinnacle Field Rd
- Deer Valley Rd
- Beardley Rd
- Union Hills Dr
- Bell Rd
- Greenway Rd
- Whittell Rd
- Cactus Rd
- Peoria Ave
- Olive Ave
- Northern Ave
- Glendale Ave
- Rainey/Hanna Rd
- Cornelback Rd
- Indian School Rd
- Thomas Rd
- McDowell Rd
- INTERSTATE 10
- Van Buren St
- Yuma Rd
- Lower-Balique Rd
- Greenway Rd
- Southern Ave
- Basilone Rd
- Belmont Rd
- Elliot Rd
- Narramore Rd
- Ray Rd
- Williams Field Rd

Transit Framework

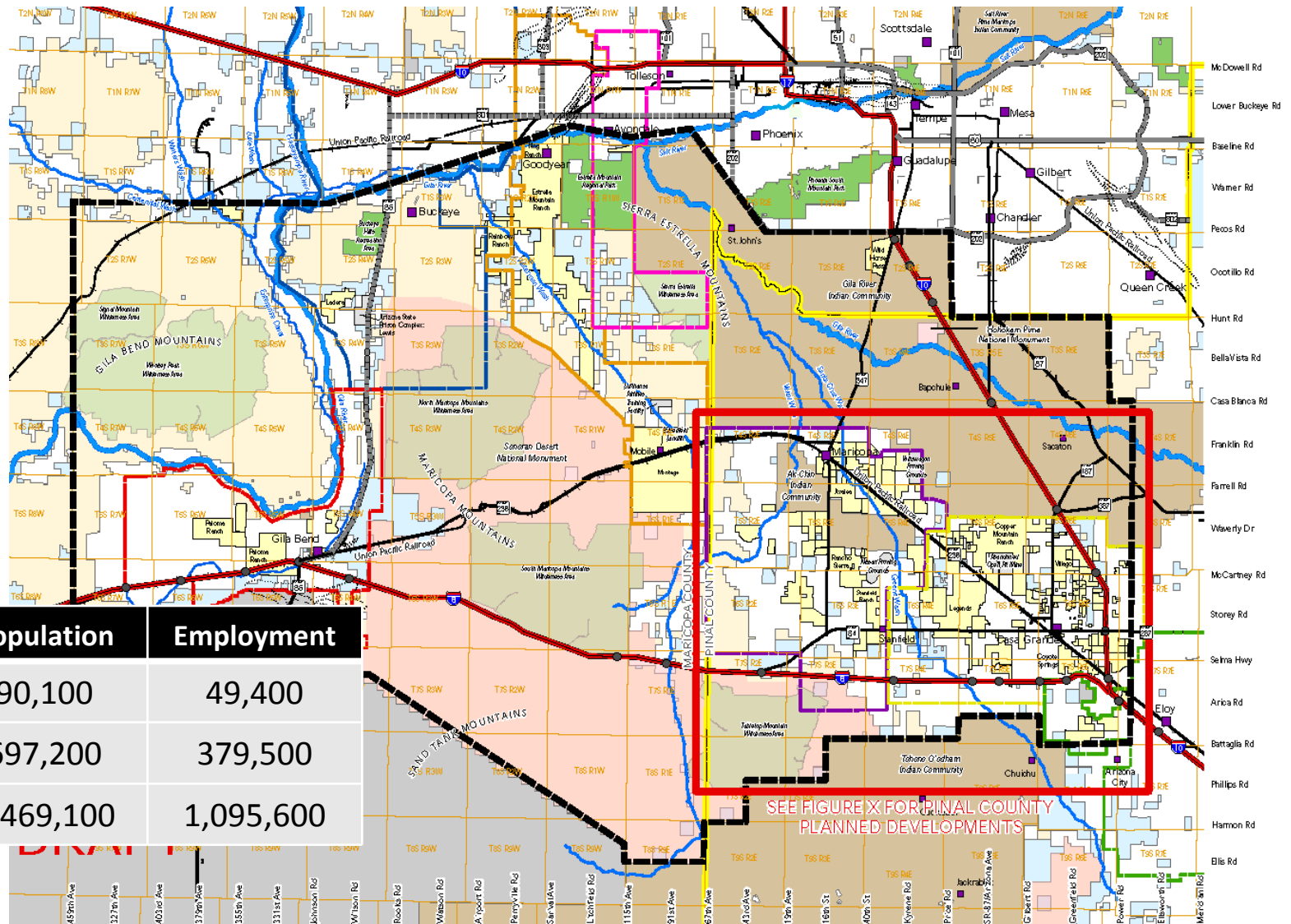
INTERSTATE 10-HASSAYAMPA VALLEY



Proposal

-  Bus Rapid Transit
-  High Capacity Shuttle Transit
-  Commuter Rail
-  Freight and Passenger Rail Connector

Accepted by the
MAG Regional Council
on February 27, 2008.



	Population	Employment
2005	90,100	49,400
2030	697,200	379,500
Build-Out	2,469,100	1,095,600

SEE FIGURE X FOR PINAL COUNTY PLANNED DEVELOPMENTS

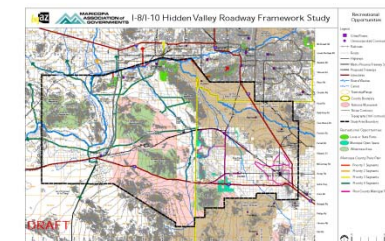
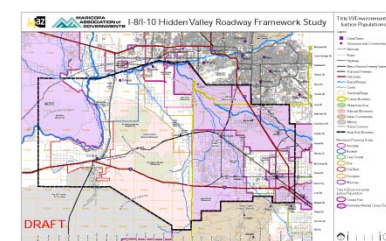
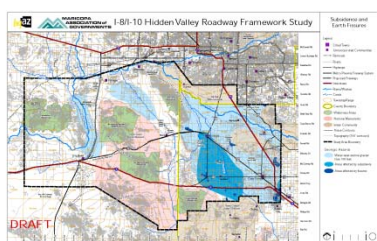
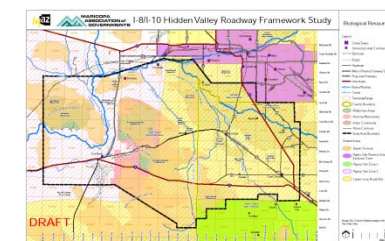
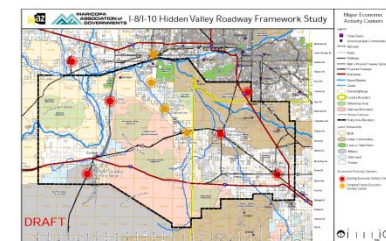
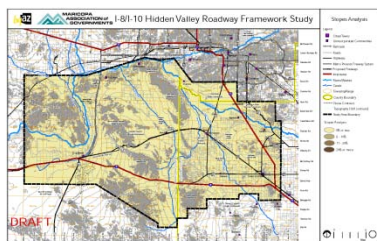
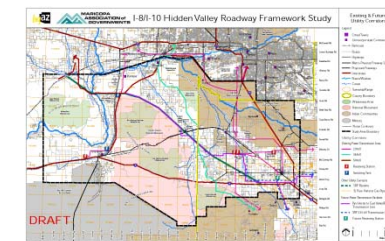
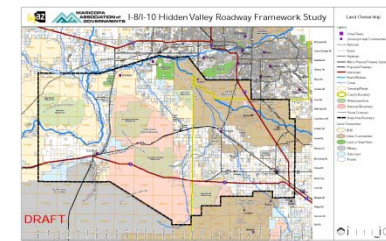
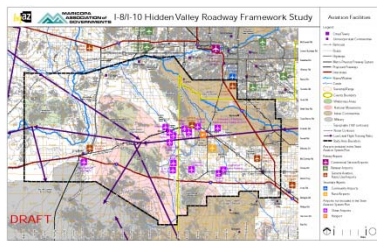
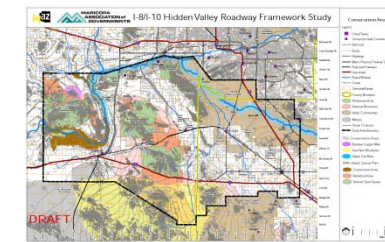
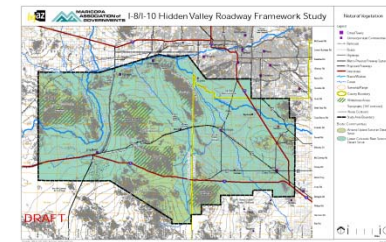
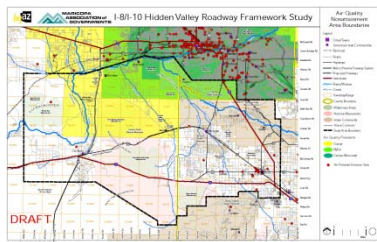
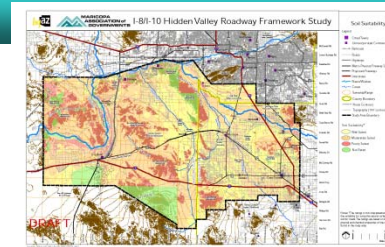
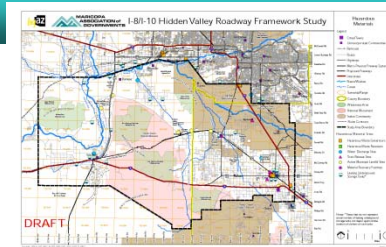
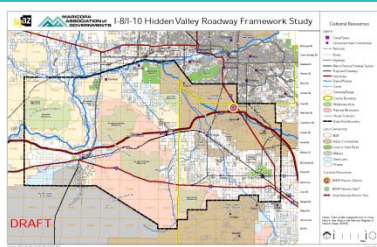
Interstates 8 and 10 – Hidden Valley

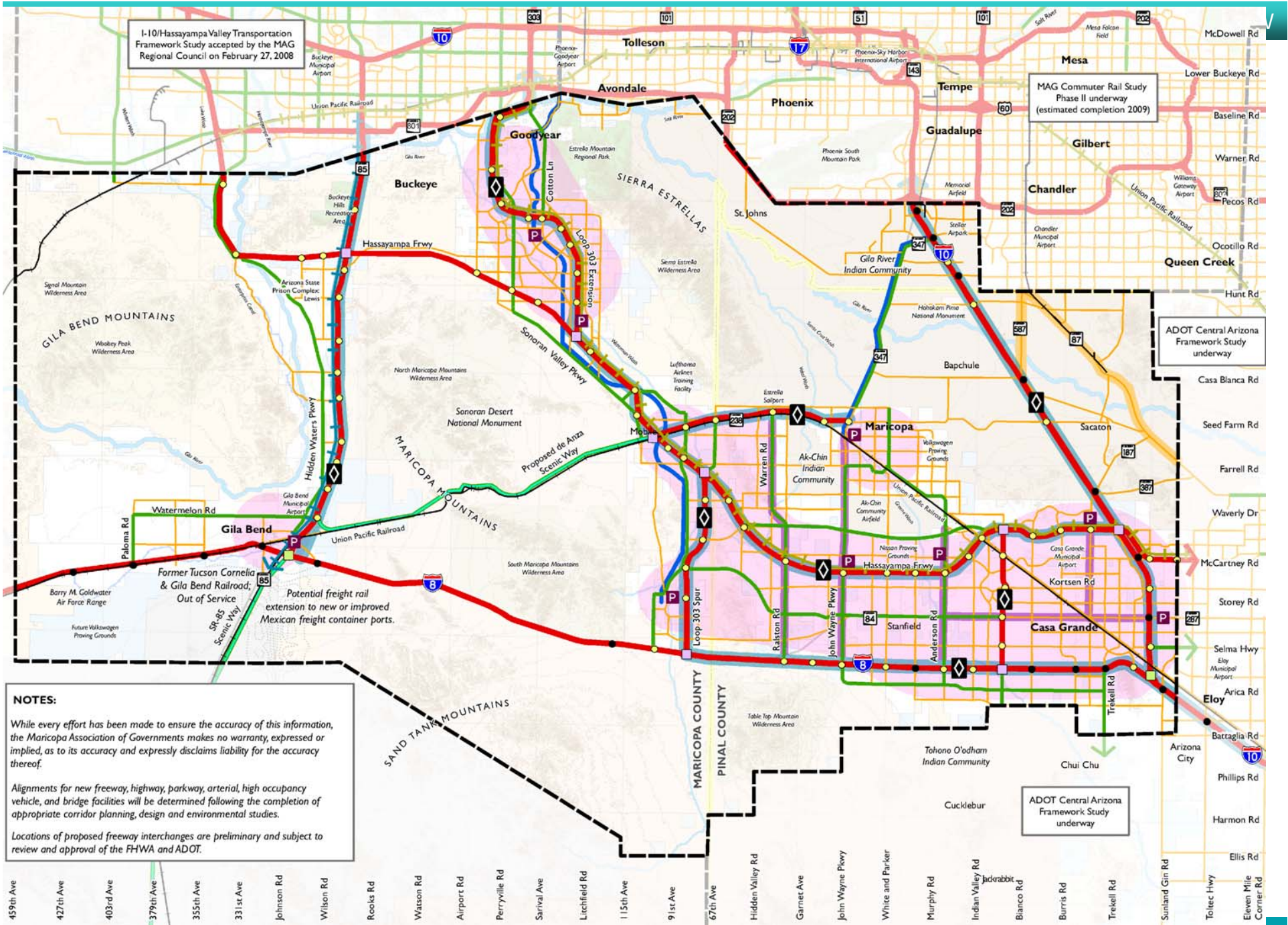


Environmental Scan

INTERSTATES 8 AND 10-HIDDEN VALLEY

- Cultural Resources
 - Air Quality
 - Aviation
- Slopes Analysis
- Hazardous Materials
- Natural Vegetation
- Land Ownership
- Major Economic Centers
- Title VI/Environ Justice
 - Conservation Areas
 - Utility Corridors
- Biological Resources
 - Recreation Opportunities
 - Wildlife Corridors





I-10/Hassayampa Valley Transportation Framework Study accepted by the MAG Regional Council on February 27, 2008

MAG Commuter Rail Study Phase II underway (estimated completion 2009)

ADOT Central Arizona Framework Study underway

ADOT Central Arizona Framework Study underway

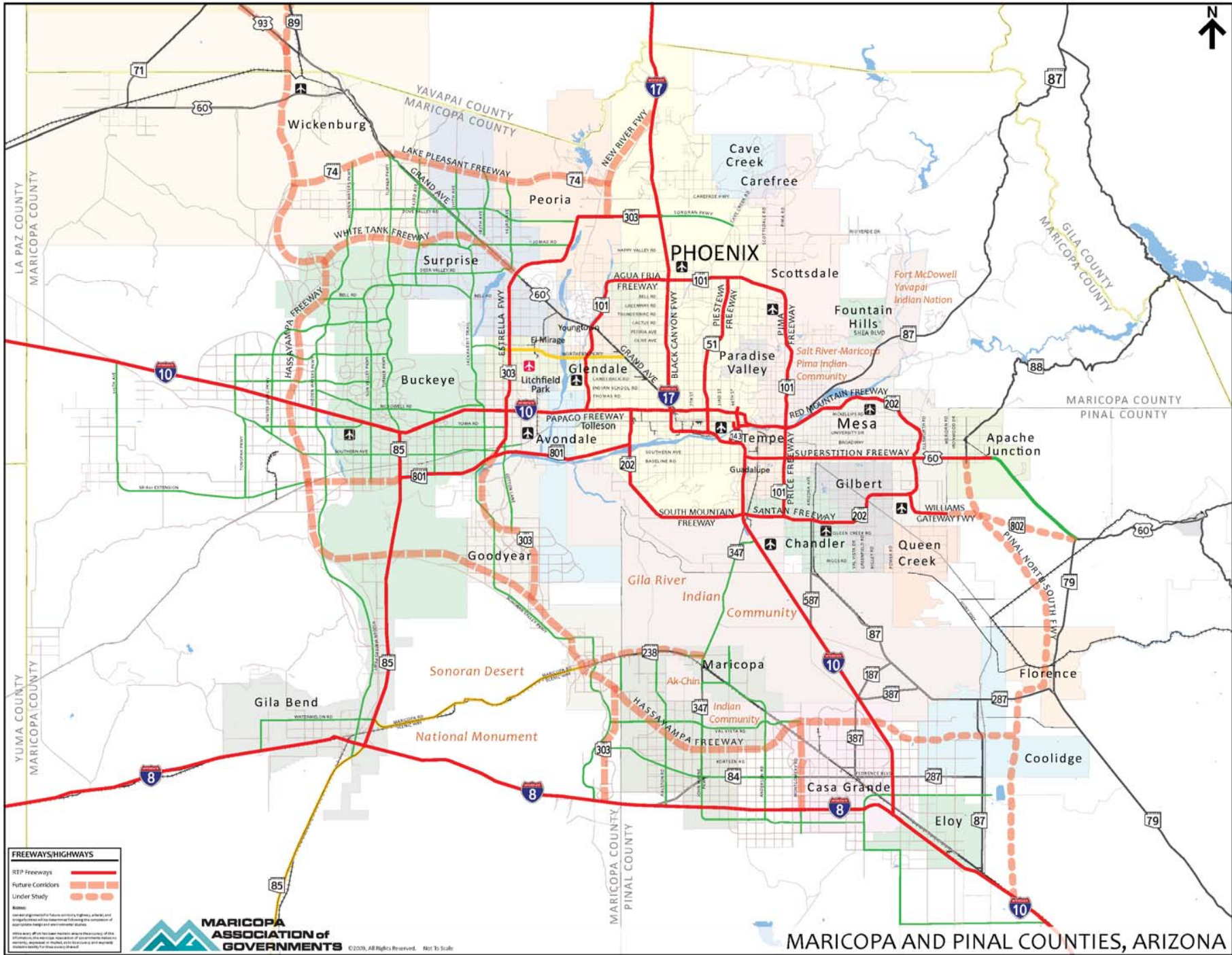
NOTES:

While every effort has been made to ensure the accuracy of this information, the Maricopa Association of Governments makes no warranty, expressed or implied, as to its accuracy and expressly disclaims liability for the accuracy thereof.

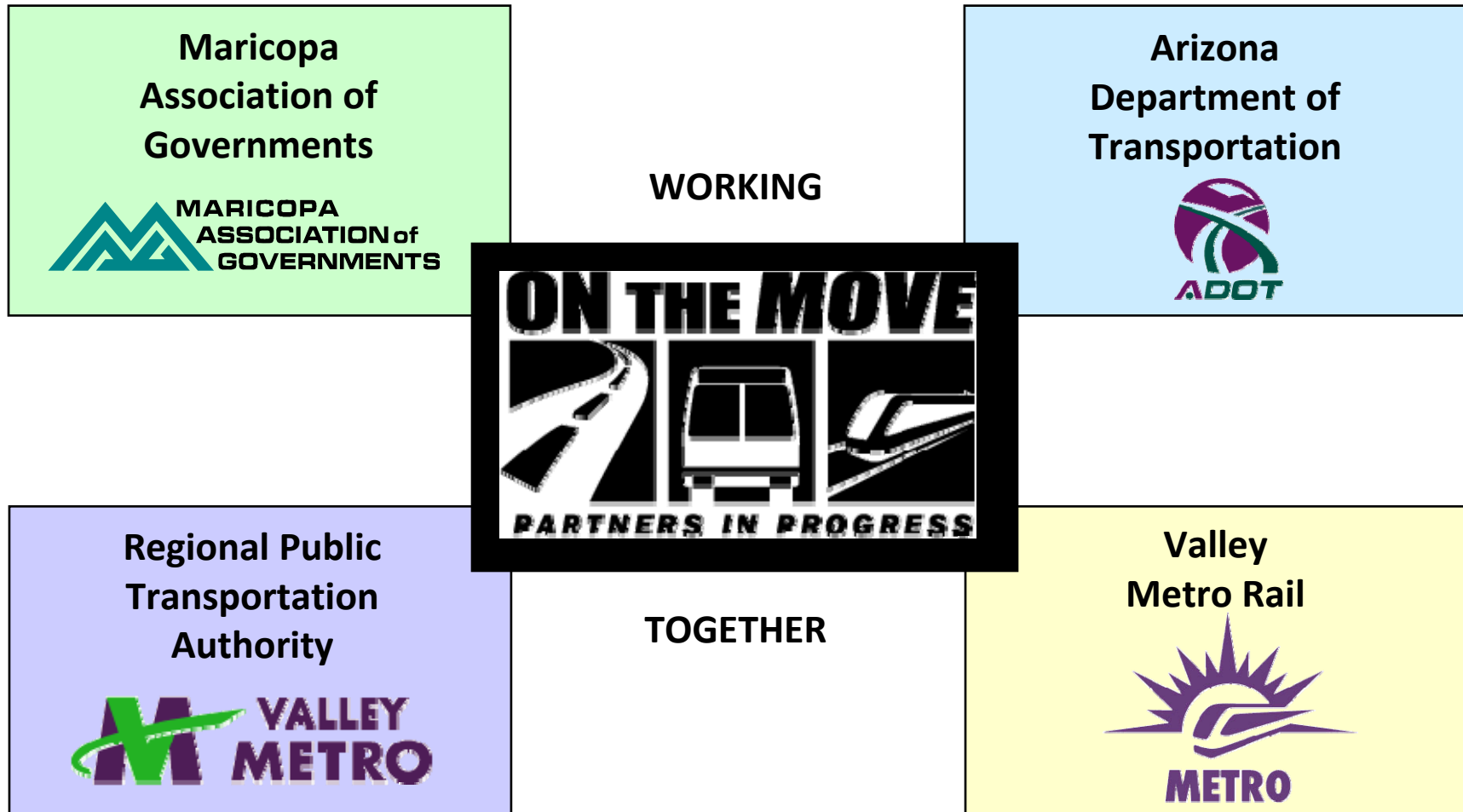
Alignments for new freeway, highway, parkway, arterial, high occupancy vehicle, and bridge facilities will be determined following the completion of appropriate corridor planning, design and environmental studies.

Locations of proposed freeway interchanges are preliminary and subject to review and approval of the FHWA and ADOT.

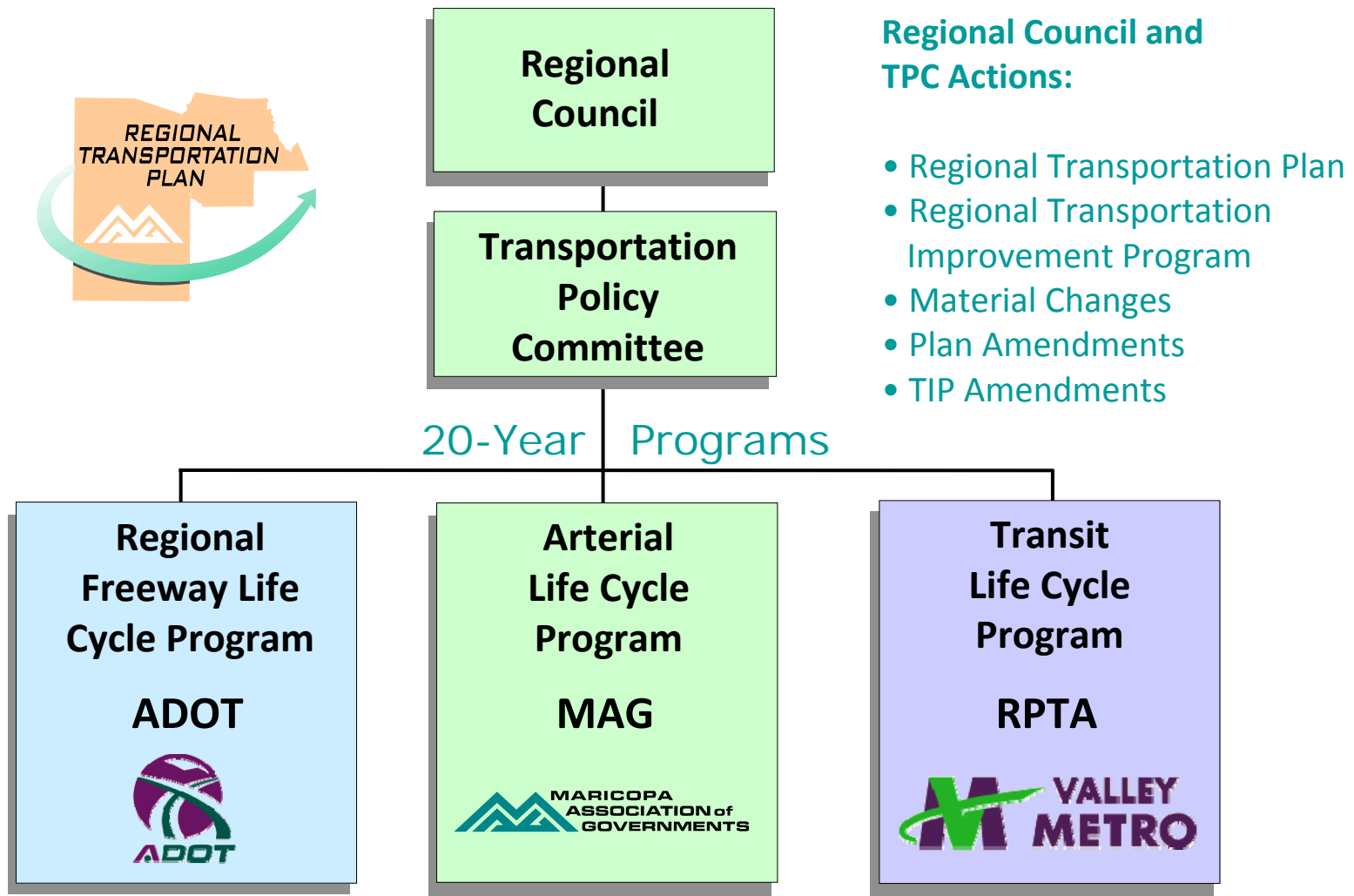
- 459th Ave
- 427th Ave
- 403rd Ave
- 379th Ave
- 355th Ave
- 331st Ave
- Johnson Rd
- Wilson Rd
- Roots Rd
- Watson Rd
- Airport Rd
- Perryville Rd
- Sarival Ave
- Litchfield Rd
- 115th Ave
- 9 1st Ave
- 67th Ave
- Hidden Valley Rd
- Garnet Ave
- John Wayne Pkwy
- White and Parker
- Murphy Rd
- Indian Valley Rd
- Jackrabbit
- Bianco Rd
- Burriss Rd
- Trekell Rd
- Sunland Gin Rd
- Toitec Hwy
- Ellis Rd
- Eleven Mile Corner Rd



Transportation Agencies

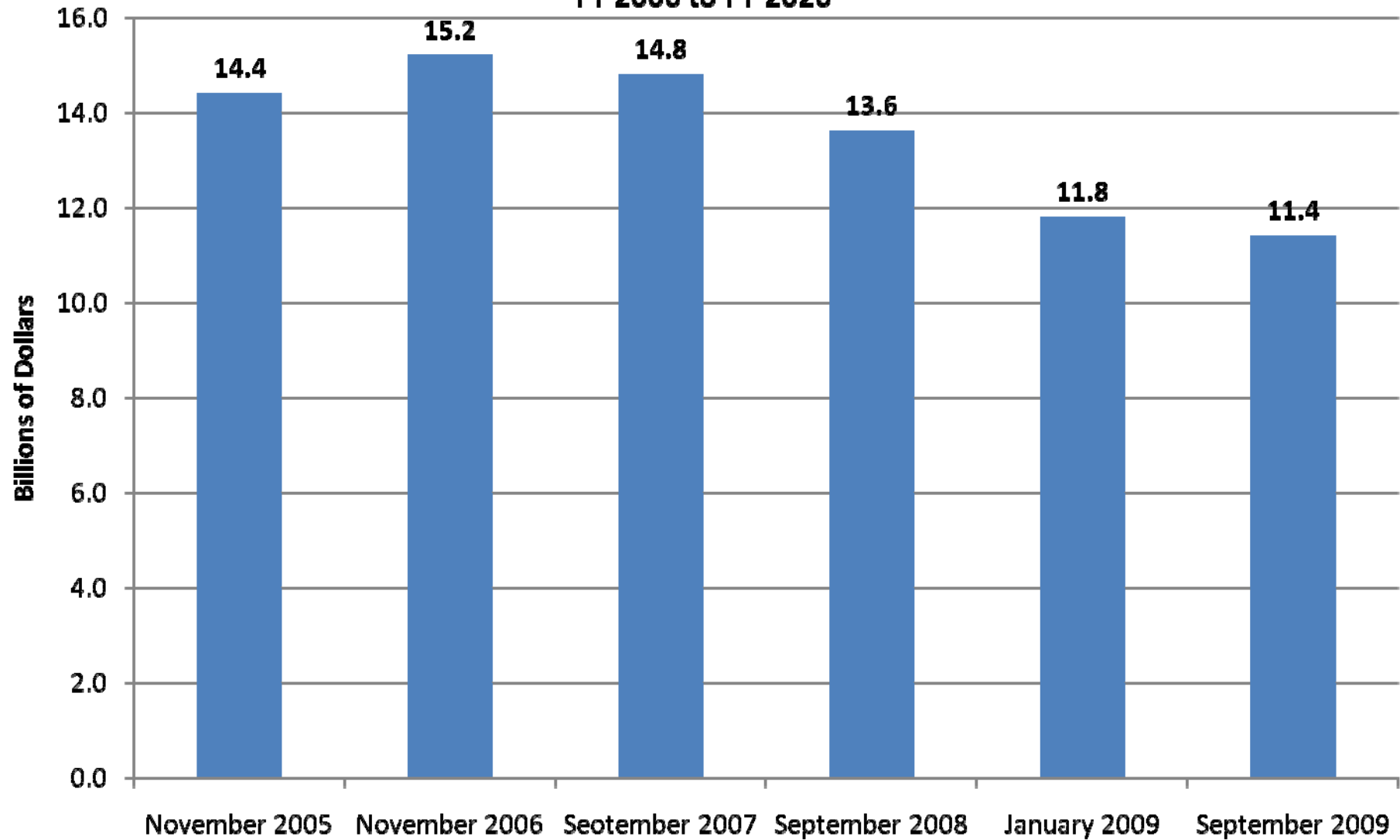


Proposition 400 Responsibilities



Proposition 400 Sales Tax Revenue

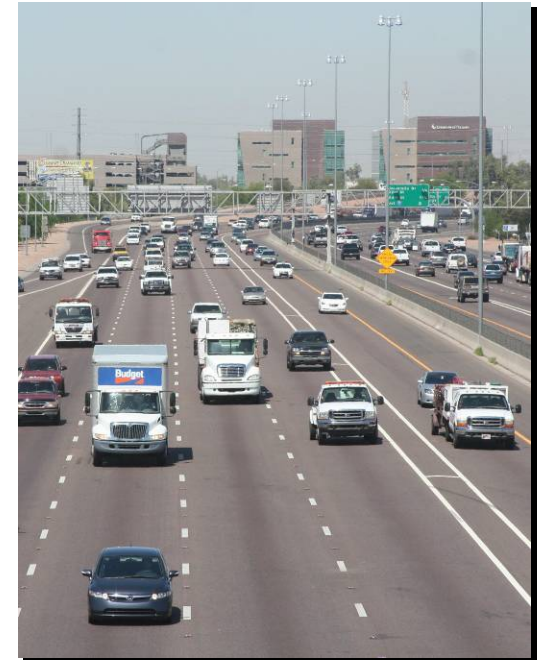
FY 2006 to FY 2026



Forecast Series

Freeway Program Financials

Regional Transportation Plan Proposition 400 Budget	\$9,421.2 million
Current ADOT Cost Opinion for the Regional Freeway Program	\$15,952.4 million
Projects Obligated thru FY2010	\$2,716.1 million
ADOT Cost Opinion for completing the Regional Freeway Program	\$13,236.3 million
Available Funding for balance of Regional Freeway Program	\$6,610.0 million
Program Deficit	\$6,626.3 million



*Looking west at I-10/Maricopa from
the 40th St Overcrossing*

Tentative Scenario Project Changes

